



EDUHEAL FOUNDATION



INTERACTIVE OLYMPIADS

EDUHEAL FOUNDATION CONDUCTS 6 OLYMPIADS ANNUALLY REACHING OUT TO 3,500 + SCHOOLS
• 4 LAKH + STUDENTS • 50,000 COORDINATING TEACHERS AND HAVING 500 RESOURCE PERSONS
IN ENGLISH / MATHS / SCIENCE / BIOTECH / COMPUTER / G.K. & 300 REGIONAL COORDINATORS.

WEBSITE : WWW.EDUHEALFOUNDATION.ORG • E-MAIL : EDUHEALFOUNDATION@GMAIL.COM

ICO INTERNATIONAL CYBER OLYMPIAD	NISO NATIONAL INTERACTIVE SCIENCE OLYMPIAD	NIMO NATIONAL INTERACTIVE MATHS OLYMPIAD	NBTO NATIONAL BIOTECHNOLOGY OLYMPIAD	IEO INTERNATIONAL ENGLISH OLYMPIAD	IGO INTERNATIONAL G.K. OLYMPIAD
---	---	---	--	---	--

**INTERNATIONAL
CYBER
OLYMPIAD**

ICO

4
Class

A1
Paper
Code

Academic Partner ——— WWW.EDUSYS.IN

EtG
BOOKS

Creating
SUCCESS
Stories

A Unit of EDUSYS LEARNING MEDIA

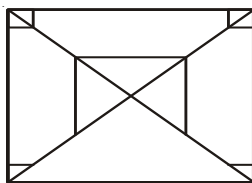
AIEEE • IIT • PMT • OLYMPIADS

IMPORTANT INFORMATION

- You are allowed additional 10 minutes to fill the required details in the **RESPONSE SHEET**.
- The question paper is made as per syllabus guidelines & pattern given in the information Booklet. The Question Paper for Classes 1 to 6 contains 25 Questions each to be answered in 40 minutes. The Question paper for classes 7 to 12 contains 50 Questions each to be answered in 60 minutes. All questions are compulsory. Further instructions are given in the instruction letter to the coordinator teacher.
- Use the response sheet to mark your responses by darkening the required circle. The response sheet has to be returned to the foundation, duly filled in. The student can retain the Question Paper.

MENTAL ABILITY

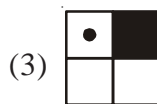
- Complete the missing portion of the given pattern by selecting the suitable choice from the given alternatives.



- (1) (2)
- (3) (4) None of these

- Three figures are given. One of these figures does not fit with the rest of the figures. Find out that figure.

- (1) (2)



- (3) (4) None of these

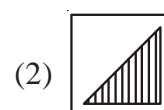
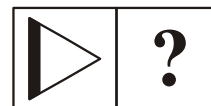
- is to as is to :

- (1) (2) (3) (4) None of these

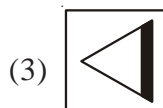
- The angle between the hands of a clock is maximum at :

- (1) 12 O'clock (2) 9 O'clock
(3) 6 O'clock (4) None of these

- Replace the '?' with the option given.



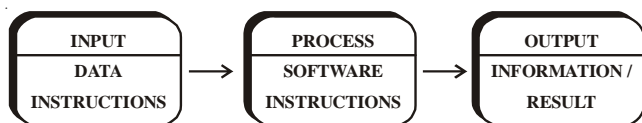
- (1) (2)



- (3) (4) None of these

COMPUTERS

For Questions 6 & 7



6. Which is used to input data :
 (1) Keyboard (2) Monitor
 (3) CPU (4) None of these
7. Which part of computer does processing :
 (1) Printer (2) Monitor
 (3) CPU (4) None of these
8. Computers can't interpret the data they generate, it is one of the
 (1) Advantage (2) Benefit
 (3) Limitation (4) None of these
9. Large amount of cash dealings are done very fast with computers in _____ sectors.
 (1) Park (2) Banks
 (3) Home (4) None of these
10. Mouse has _____ or _____ buttons.
 (1) 2,3 (2) 7, 8
 (3) 5, 6 (4) None of these
11. In windows all the drives can be operated by the
 (1) Start button (2) My Computer icon
 (3) Scroll bar (4) None of these
12. 'Ctrl + N' command is used in Word for
 (1) Creating a new file (2) Editing a document
 (3) Deleting a document (4) None of these
13. This is a blinking vertical line in the work space.
 (1) Cursor (2) Arrow
 (3) Mouse (4) None of these
14. You put information into the computer by pressing this key.
 (1) Caps lock (2) Enter
 (3) Tab (4) None of these



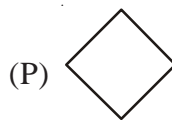
15. These are

- (1) Cursor keys (2) Numeric keys
- (3) Direction keys (4) None of these

16. Match the following.

Column-A

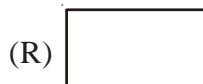
Column-B



1. Start and stop



2. Calculations



3. Input / Output



4. Decisions

- (1) P - 4, Q - 3, R - 2, S - 1
- (2) P - 1, Q - 3, R - 2, S - 4
- (3) P - 2, Q - 3, R - 4, S - 1
- (4) None of these

17. Choose the word, which is least like the other words in the group.

- (1) Keyboard (2) Memory Chip
- (3) Hard Disk (4) None of these

18. While working with Microsoft-Word, to undo the most recent action, we have to press the following keys.

- (1) Ctrl + Z (2) Ctrl + V
- (3) Ctrl + X (4) None of these

19. In Windows operating system, how to see the disk drive that is available in your computer?

- (1) By double clicking on 'My Documents'
- (2) By double clicking on 'My Computer'
- (3) Any of the above
- (4) None of these

20. The 'delete command' moves the file to _____

- (1) My computer (2) Recycle bin
- (3) Folder (4) None of these

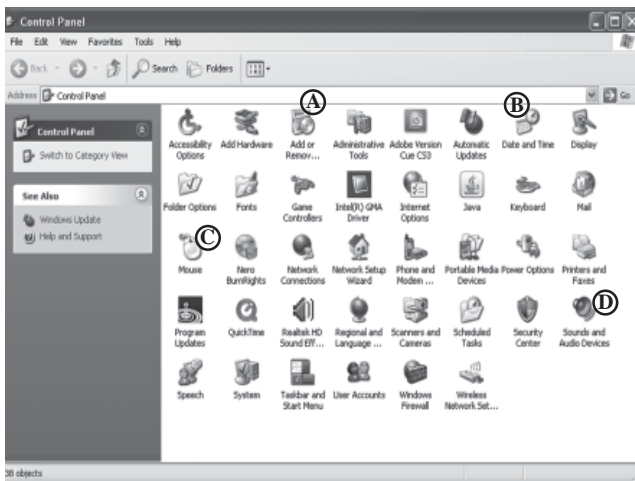
ITG INTERACTIVE SECTION

21. A pendrive is connected to



- (1) Monitor (2) UPS
- (3) CPU (4) None of these

Using the given figure answer question 22 to 25.



22. Which option is used to change mouse setting
(1) B (2) C
(3) A (4) None of these
23. To increase sound volume
(1) D (2) A
(3) B (4) None of these
24. To uninstall a software
(1) A (2) B
(3) D (4) None of these
25. To change current date we use
(1) B (2) C
(3) D (4) None of these



END OF THE EXAM

ROUGH PAGE