



EDUHEAL FOUNDATION



INTERACTIVE OLYMPIADS

EDUHEAL FOUNDATION CONDUCTS 8 OLYMPIADS ANNUALLY REACHING OUT TO 3,500 + SCHOOLS

• 4 LAKH + STUDENTS • 50,000 COORDINATING TEACHERS AND HAVING 500 RESOURCE PERSONS

IN ENGLISH / MATHS / SCIENCE / BIOTECH / COMPUTER / G.K. / ARTS / CRICKET & 300 REGIONAL COORDINATORS.

WEBSITE : WWW.EDUHEALFOUNDATION.ORG • E-MAIL : EDUHEALFOUNDATION@GMAIL.COM

ICO INTERNATIONAL CYBER OLYMPIAD	NISO NATIONAL INTERACTIVE SCIENCE OLYMPIAD	NIMO NATIONAL INTERACTIVE MATHS OLYMPIAD	NBTO NATIONAL BIOTECHNOLOGY OLYMPIAD	IEO INTERNATIONAL ENGLISH OLYMPIAD	IGO INTERNATIONAL G.K. OLYMPIAD
---	---	---	--	---	--

Level - 1 : Level-1 winners will get certificate, aptitude report, medals for the school toppers and online subscription.

Level - 2 : Top 10 % including school toppers will be selected for level-2-National level - online computer based interactive test held at exam centres all over India. Besides selection for level-3, winner will get merit certificate, aptitude report, medals, Mp3 player, watches, educational CDs, laptop, scholarship, online subscription etc.

Level - 3 : Top 1% will qualify for level 3-International level-where you will compete with students globally. Get selected for EHF's International Olympiad training camp. Only Indian organization giving students exposure to global competitions. Represent India & win laurels. Guidance by top scientists.

Prizes ranges from cash (millions of \$), gadgets, foreign trips, publicity, fame, scholarships, Internships, conference participation and more.

- You are allowed additional 10 minutes to fill the required details in the **RESPONSE SHEET**.
- The question paper is made as per syllabus guidelines & pattern given in the information Booklet. The Question Paper for Classes 1 to 6 contains 25 Questions each to be answered in 40 minutes. The Question paper for classes 7 to 12 contains 50 Questions each to be answered in 60 minutes. All questions are compulsory. Further instructions are given in the instruction letter to the coordinator teacher.
- Use the response sheet to mark your responses by darkening the required circle. The response sheet has to be returned to the foundation, duly filled in. The student can retain the Question Paper.

INTERNATIONAL CYBER OLYMPIAD

ICO



LEVEL - 1



ORACLE ThinkQuest
EDUCATION FOUNDATION

SECTION A : MENTAL ABILITY

- Find the odd one out : -
396 462, 572, 427, 671, 264.
(1) 396 (2) 427
(3) 671 (4) None of these
- Find the odd one out :-
2, 5, 10, 17, 26, 37, 50, 64
(1) 50 (2) 26
(3) 64 (4) None of these
Find out the wrong number in the given series of numbers and answer question nos 3 to 5
- 582, 605, 588, 611, 634, 617, 600
(1) 634 (2) 611
(3) 605 (4) None of these
- 8, 13, 21, 32, 47, 63, 83
(1) 47 (2) 63
(3) 32 (4) None of these

- 1, 2, 6, 15, 31, 56, 91
(1) 31 (2) 91
(3) 56 (4) None of these
- Fill in the blank
16, 33, 65, 131, 261, ____
(1) 523 (2) 521
(3) 613 (4) None of these
- A fruit basket contains more apples than lemon. There are more lemons in the basket than there are oranges. The basket contains more apples than oranges. If the first two statements are correct than the third statement is
(1) True (2) False
(3) Uncertain (4) None of these
- A four person crew from classic colours is painting Mr. Field's house. Micheal is painting the front of the house. Ross in the alley behind the house painting the back. Jed is painting the window frames on the north side, George is on the south. If Michael switches places with Jed and Jed then

switches places with George, where is George?

- (1) In the alley behind the house
 - (2) On the north side of the house
 - (3) In the front of the house
 - (4) None of these
9. At a cricket game, Henry was sitting on seat 253. Marla was sitting to the right of Henry on seat 254. On the seat to the left of Henry was George. Jane was sitting to the left of George. Which seat is Jane sitting on?
- (1) 251 (2) 254
 - (3) 255 (4) None of these
10. Fill in the blank
FAG, GAF, HAI, IAH, ____
- (1) JAK (2) HAL
 - (3) HAK (4) None of these

SECTION-B : GENERAL COMPUTER

11. What is World Wide Web?
- (1) A computer game
 - (2) A software program
 - (3) The part of the Internet that enables information-sharing via interconnected pages
 - (4) None of these
12. What is the name of the language you use to write a web page?
- (1) HTML (2) FTP
 - (3) URL (4) HTTP
13. Web pages are stored on _____ located around the globe.
- (1) Weblinks (2) Web serves
 - (3) Search engines (4) None of these
14. Which of the following is a protocol?
- (1) www (2) gov
 - (3) http (4) None of these
15. Why e-mail attachment is harmful?
- (1) They may overload your computer
 - (2) They may contain virus
 - (3) They may cost you money
 - (4) All of these
16. When you delete a mail it goes to
- (1) Trash (2) Computer's recycle bin
 - (3) Outbox (4) None of these

17. An HTML _____ takes text in one format and changes it to HTML code.
- (1) Browser (2) Editor
 - (3) Converter (4) Processor
18. Wi-Fi stands for
- (1) Wireless fidelity (2) Wire fidelity
 - (3) Wiring fidelity (4) None of these
19. _____ displays the status of the currently opened web page when an action is being performed on the web page.
- (1) Address Bar (2) Status Bar
 - (3) Title Bar (4) None of these
20. _____ is a process of making an entire copy of your data and storing it in a different location on your computer.
- (1) Record (2) Backup
 - (3) Spam (4) None of these
21. The Intersection of a row and a column is known as
- (1) Cell (2) Fields
 - (3) Record (4) None of these
22. Which code is used to notify the end of the HTML coding?
- (1) <HTML> (2) <HEAD>
 - (3) <BODY> (4) None of these
23. The combination of Ctrl + C keys is used to
- (1) Paste the copied text (2) Copy the selected text
 - (3) Save the document (4) None of these
24. A _____ is a nested element inside another element
- (1) Parent element (2) Child element
 - (3) Small element (4) None of these
25. A virus is a harmful program which on entering a computer, starts creating copies of itself.
- (1) True (2) False
 - (3) Can't Say (4) None of these
26. The _____ protocol is used for most URL addresses.
- (1) HTML (2) ISP
 - (3) HTTP (4) None of these
27. The best way to get a slide show to stop is to
- (1) Press Escape (2) Exit Power Point
 - (3) Click the stop button (4) None of these
28. A letter or the symbol which is never included in the web addresses is
- (1) . (full stop) (2) //
 - (3) @ (4) None of these

29. Which type of errors are flagged by compiler?

- (1) Logical errors (2) ABACUS
- (3) Syntax errors (4) None of these

30. A rubric is a _____

- (1) Communicating real time on the Internet.
- (2) A performance matrix used for authentic assessment.
- (3) Program that enhances a browser's capability.
- (4) None of these.

SECTION-C : C++ AND VB

31. Event driven languages are

- (1) FORTRAN Based
- (2) Used to write procedural languages
- (3) Designed to make GUI easier
- (4) None of these

32. The first procedure oriented language was

- (1) FORTRAN (2) BASIC
- (3) COBOL (4) ADA

33. Visual basic projects are identified by a

- (1) "vap" suffix (2) "mok" suffix
- (3) "vbg" suffix (4) None of these

34. To run an application in visual basic :

- (1) Click on start button (blue arrow)
- (2) use the file menu
- (3) use the project menu to select Run
- (4) None of these

35. The reference library of visual basic books is called

- (1) MSDN Library (2) Help Library
- (3) Contents (4) Topic Name

36. The use of break statement in a switch statement is

- (1) Implicit (2) Compulsory
- (3) Not allowed. It gives an error message
- (4) None of these

37. When the compiler can not differentiate between two overloaded constructors, they are called

- (1) Overloaded (2) Destructed
- (3) Roll backed (4) None of these

38. The compiler converts C++ instructions into _____

- (1) Edited code (2) Object code
- (3) Source code (4) None of these

39. Variables declared outside a block are called _____

- (1) Global (2) Universal
- (3) Stellar (4) None of these

40. First element in a string is

- (1) The name of the string
- (2) The width of the string
- (3) The length of the string
- (4) None of these

SECTION-C : JAVA

31. Consider the following program :

```
import mylibrary.*;
public class showsomeclass()
{
    // code for the class.....
}
```

What is the name of the java file containing this program?

- (1) MyLibrary.java (2) ShowSomeClass
- (3) ShowSomeClass.java (4) None of these

32. You read the following statement in a java program that compiles and executes.

submarine.dive(depth) :

What can you say for sure?

- (1) Depth must be an int
- (2) Dive must be a method.
- (3) Submarine must be a method
- (4) None of these

33. What is garbage collection in context of java?

- (1) The operating system periodically add all of the java files available on the system.
- (2) Any package imported in a program and not used is automatically deleted.
- (3) When all references to an object are gone, the memory used by the object is automatically reclaimed.
- (4) None of these

34. What is byte code in context of JAVA?

- (1) The type of code generated by a Java compiler.
- (2) The type of code generated by a Java virtual machine
- (3) It is another name for a Java source file.
- (4) None of these

35. Consider

```
public class My class }
public MyClass ( ) { /* code */ }
```

// more code ...

}

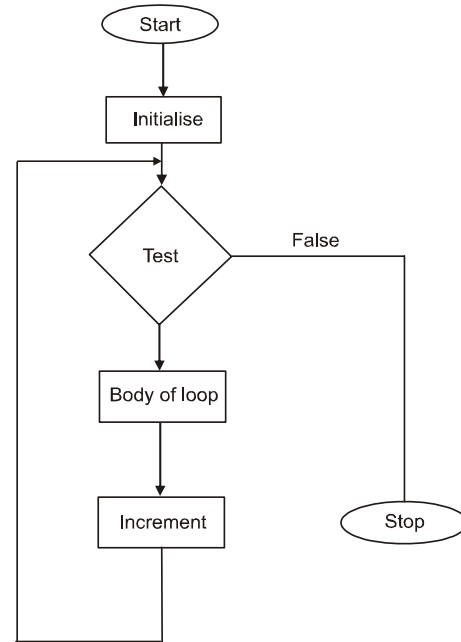
To instantiate My class, you would write?

- (1) My Class mc = new My class ()
 - (2) My Class mc = My Class ()
 - (3) My Class mc = new My Class
 - (4) None of these
36. What is difference between a java applet and a java application?
- (1) An application can in general be trusted whereas an applet can't
 - (2) An applet should not be executed in a browser environment
 - (3) An applet is able to access the files of the computer it runs on
 - (4) None of these
37. Which one of the following may be part of a class definition?
- (1) String variables
 - (2) Array
 - (3) Constructors
 - (4) All of the above
38. A Constructor
- (1) Must have the same name as the class it is declared within
 - (2) May be declared private
 - (3) A and B
 - (4) None of these
39. Consider the following code snippet
- ```
String river = new string ("columbia");
System. out. println (river.length ());
```
- What is printed?
- (1) 6
  - (2) 7
  - (3) 8
  - (4) None of these
40. Which of the following is true?
- (1) In java, an instance field declared public generates a compilation error.
  - (2) A class has always a constructor (possibly automatically supplied by the Java compiler).
  - (3) int is the name of a class available in the package java.long.
  - (4) None of these.

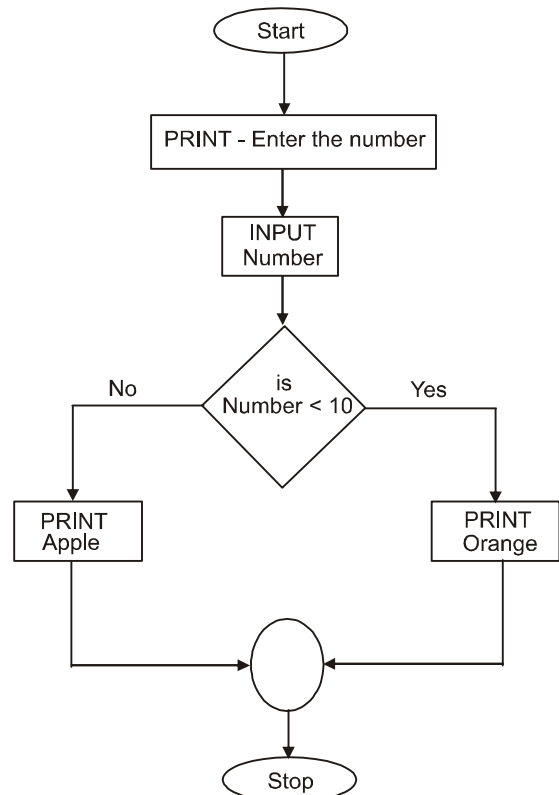
### INTERACTIVE SECTION

41. When you connect to an online information service, you are asked to provide some kind of identification such as your name, an account number and a password. What is the name given to this brief dialogue between you and the information system?
- (1) Security procedure
  - (2) Safeguard procedure
  - (3) Log - on procedure
  - (4) None of these

42. Which operation is illustrated below ?



- (1) While Loop
  - (2) For loop
  - (3) Do while loop
  - (4) None of these
43. Predict the output of the program shown in the following flowchart if input is 6.



- (1) Apple
- (2) Orange
- (3) PRINT orange
- (4) None of these

44. Which of the following name does not relate to stacks

- (1) Push-down lists      (2) Piles  
(3) FIFO lists            (4) None of these

45. Binary search algorithm can not be applied to

- (1) Sorted binary trees    (2) Sorted linear array  
(3) Pointer array          (4) None of these

46. When new data is to be inserted into a data structure, but there is no available space; this situation is usually called

- (1) Houseful                (2) Overflow  
(3) Underflow              (4) None of these

47. What is the shortcut key to permanently delete a file from computer?

- (1) Delete                  (2) Alt + Delete

- (3) Ctrl + Delete          (4) None of these

48. Which of the following is not a browser?

- (1) Mozilla                  (2) Internet Explorer  
(3) MS-Office               (4) None of these

49. What is the default file extension for all word documents?

- (1) FIL                        (2) DOC  
(3) WRD                      (4) None of these

50. Which is the Binary - Decimal conversion for the given question?

$$(\text{_____})_{10} = (1100110)_2$$

- (1) 100                        (2) 101  
(3) 102                        (4) None of these



**END OF THE EXAM**