



EDUHEAL FOUNDATION

EDUHEAL FOUNDATION CONDUCTS 8 OLYMPIADS ANNUALLY REACHING OUT TO 3,500 + SCHOOLS

• 5 LAKH + STUDENTS • 50,000 TEACHERS AND HAVING 500 RESOURCE PERSONS

IN ENGLISH / MATHS / SCIENCE / BIOTECH / COMPUTER / G.K. / ARTS / CRICKET / FINANCE & 300 REGIONAL COORDINATORS.

WEBSITE : WWW.EDUHEALFOUNDATION.ORG • E-MAIL : INFO@EDUHEALFOUNDATION.ORG

ICO INTERNATIONAL CYBER OLYMPIAD	NISO NATIONAL INTERACTIVE SCIENCE OLYMPIAD	NIMO NATIONAL INTERACTIVE MATHS OLYMPIAD	NBTO NATIONAL BIOTECHNOLOGY OLYMPIAD	IEO INTERNATIONAL ENGLISH OLYMPIAD	IGO INTERNATIONAL G.K. OLYMPIAD	BIFO BSE INTERNATIONAL FINANCE OLYMPIAD
---	---	---	--	---	--	--

Level - 1 : All Level-1 successful* participants will get certificate, aptitude report and online subscription, and school toppers will be eligible for school hero medals.

Level - 2 : School toppers* will be selected for level-2-National level - online computer based interactive test held at exam centres all over India. Besides selection for level-3, winner will get merit certificate, medals, educational CDs, laptop, scholarship and other prizes. There is no level 2 in G.K. and Biotech.

Level - 3 : Toppers will qualify# for level 3-International level-where you will compete with students globally. Get selected for EHF's International Olympiad training camp. Only Indian organization giving students exposure to global competitions. Represent India & win laurels. Guidance by top scientists. Prizes ranges from cash (millions of \$), gadgets, foreign trips, publicity, fame, scholarships, Internships, conference participation and more. Level 3 is in Maths, Science & Cyber only.

*# See prospectus website for details

1. You are allowed additional 10 minutes to fill the required details in the **RESPONSE SHEET (OMR)**. **STUDENTS OF CLASS 1 & 2 HAVE TO UNDERLINE** THE CORRECT ANSWER IN THE QUESTION PAPER ITSELF. THEY ARE NOT REQUIRED TO USE THE RESPONSE SHEET (OMR). THEY HAVE TO FILL THEIR NAME, ROLL NUMBER, CLASS, SCHOOL NAME IN THE SPACE PROVIDED IN THE QUESTION PAPER.
2. The question paper is made as per syllabus guidelines & pattern given in the information Booklet. The Question Paper for Classes 1 to 6 contains 25 Questions each to be answered in 40 minutes. The Question paper for classes 7 to 12 contains 50 Questions each to be answered in 60 minutes. All questions are compulsory. Further instructions are given in the instruction letter to the teacher.
3. Use the response sheet to mark your responses by darkening the required circle. The response sheet has to be returned to the foundation, duly filled in. The student can retain the Question Paper except for classes 1 and 2.

INTERNATIONAL CYBER OLYMPIAD

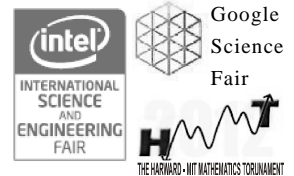
ICO

10
Class

A1
Paper
Code

LEVEL - 1

Academic Partner — WWW.EDUSYS.IN



ORACLE ThinkQuest
EDUCATION FOUNDATION

MENTAL ABILITY

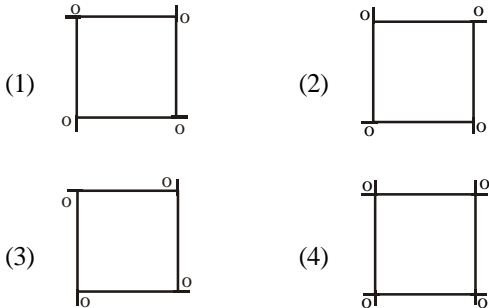
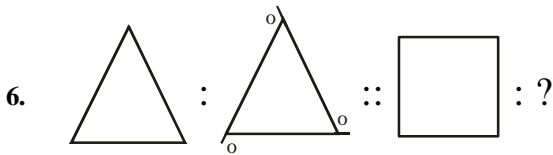
1. If \div means \times , \times means $-$, $+$ means \times and $-$ means \div , then $2 + 8 \times 16 - 4 \div 2 = ?$
(1) 4 (2) 8
(3) 10 (4) 12
2. A boy started from his home. After walking for 5km towards east, he turned to his right and walked for 8km. Then he again turned to his right and walked for 10km. In which direction was he from his house?
(1) West (2) South-West
(3) North (4) North-West
3. If the numbers between 1 to 65 are divisible by 4 are written in reverse order then which of the following numbers will

be at 10th place?

- (1) 44 (2) 24
(3) 40 (4) 48

There is some relationship between the two terms (figures/ letters) on the left side of the sign (: :). The same relationship exists between the two terms on the right of the sign (: :) of which one is missing. Find the missing one from the given four alternatives.

4. LLMO : MMNO :: AABD : ?
(1) BBCE (2) BBCD
(3) AABD (4) ABBC
5. 9 : 25 :: 49 : ?
(1) 36 (2) 81
(3) 64 (4) 100



7. The statement “If x is divisible by 8, then it is divisible by 6” is true, if x equals

- (1) 6 (2) 4
 (3) 32 (4) 48

8. What is true about the statement “If two right angles are right measure” and its converse, “If two angles have equal measure, then the two angles are right angles?”

- (1) The statement is true but its converse is false.
 (2) The statement is false but its converse is true.
 (3) Both the statement and its converse is false.
 (4) Both the statement and its converse is true.

The capital letters in each of the following words are coded and written in small letters on the right side of each word, but the small letters do not appear in the same order as the letters in the word . Find out the codes for letters and answer the questions that follow:

KING : bdme

RING : deob

INK : emb

IRK : oem

9. What is the code for letter K?

- (1) e (2) m
 (3) d (4) b

10. What would be the code (in correct order) for the word KIN?

- (1) emb (2) mbe
 (3) ome (4) meb

11. A parallel port is most often used by a _____

- (1) Printer (2) Mouse
 (3) Monitor (4) External storage devices

12. Which company is the biggest player in the microprocessor industry?

- (1) Motorola (2) IBM
 (3) Intel (4) AMD

13. Special effects used to introduce slides in a presentation are called

- (1) Effects (2) Custom animations
 (3) Transitions (4) Present animations

14. What is the term used when you press and hold the left mouse key and move the mouse around the slide?

- (1) Highlighting (2) Dragging
 (3) Selecting (4) Moving

15. How can you create a uniform appearance by adding a background image to all slides?

- (1) Create a template
 (2) Edit the slide master
 (3) Use the autocorrect wizard
 (4) All of these

16. You can create a new presentation by completing all of the following except

- (1) Clicking the new button on the standard toolbar
 (2) Clicking file, new
 (3) Clicking file, open
 (4) Pressing Ctrl + N

17. Material consisting of text and number is best presented as:

- (1) A table slide (2) A bullet slide
 (3) A title slide (4) All of these

18. What is the extension of word files?

- (1) FIL (2) DOT
 (3) DOC (4) TXT

19. Which of the following option is not available in Insert>>Picture?

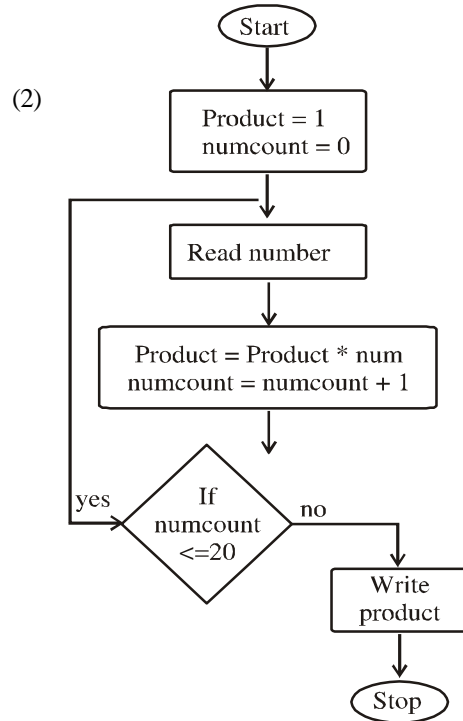
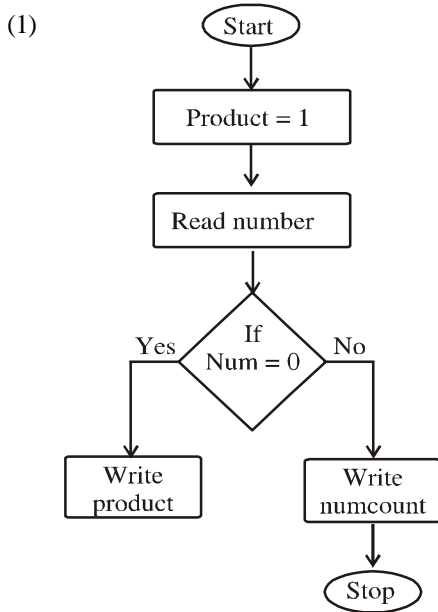
- (1) Chart (2) Word Art
 (3) Clip Art (4) Graph

20. Demodulation is a process of
- (1) Converting analog to digital signals
 - (2) Converting digital to analog signals
 - (3) Multiplexing various signals into one high speed line signals
 - (4) None of these
21. What is the default font used in MS Word document
- (1) Times New Roman
 - (2) Arial
 - (3) Verdana
 - (4) Calibri
22. You can zoom a worksheet
- (1) With the mouse pointer in Print Preview
 - (2) With the zoom button on the Print Preview toolbar
 - (3) With the zoom command on the view menu
 - (4) All of these
23. Which of the following formulas isn't entered correctly?
- (1) = 10 + 50
 - (2) = B7*B1
 - (3) = B7 + 14
 - (4) 10 + 50
24. A work sheet range is a
- (1) A command used for data modelling
 - (2) A range of values such as from 23 to 234
 - (3) A group of cells
 - (4) A group of worksheets
25. UNIVAC is
- (1) Universal Automatic Computer
 - (2) Universal Array Computer
 - (3) Unique Automatic Computer
 - (4) Unvalued Automatic Computer
26. The basic element of a picture in volume graphics is
- (1) Pixel
 - (2) Volsel
 - (3) Voxel
 - (4) None of these
27. The _____ simply reads each successive byte of data from the frame buffer
- (1) Digital controller
 - (2) Data controller
 - (3) Display controller
 - (4) None of these
28. UNIX was developed by
- (1) Bell labs
 - (2) Berkley software
 - (3) California university
 - (4) Medium System Intelligent Circuits
29. The 2s compliment form (use 6 bit word) of the number 1010 is
- (1) 111100
 - (2) 110110
 - (3) 110111
 - (4) 1011
30. VGA is
- (1) Video Graphics Array
 - (2) Visual Graphics Array
 - (3) Volatile Graphics Array
 - (4) None of these
31. CD-ROM stands for
- (1) Compactable Read Only Memory
 - (2) Compact Data Read Only Memory
 - (3) Compactable Disk Read Only Memory
 - (4) Compact Disk Read Only Memory
32. ASCII stands for
- (1) American Standard Case for International Interchange
 - (2) American Standard Case for Institutional Interchange
 - (3) American Standard Code for Information Interchange
 - (4) American Standard Code for Interchange Institution
33. BCD is :
- (1) Binary Coded Decimal
 - (2) Bit Coded Decimal
 - (3) Binary Coded Digit
 - (4) Bit Coded Digit
34. FORTRAN is
- (1) File Translation
 - (2) Format Translation
 - (3) Formula Translation
 - (4) Floppy Translation
35. EEPROM stands for
- (1) Electrically Erasable Programmable Read Only Memory
 - (2) Easily Erasable Programmable Read Only Memory
 - (3) Electronic Erasable Programmable Read Only Memory
 - (4) None of these
36. Second Generation computers were developed during
- (1) 1949 to 1955
 - (2) 1956 to 1963
 - (3) 1965 to 1970
 - (4) 1970 to 1990
37. Microprocessors as switching devices are for which generation computers ?
- (1) First Generation
 - (2) Second Generation
 - (3) Third Generation
 - (4) Fourth Generation

38. The computer size was very large in:
- (1) First Generation
 - (2) Second Generation
 - (3) Third Generation
 - (4) Fourth Generation
39. Which tab in font dialog box contains option to apply font effects?
- (1) Font tab
 - (2) Character spacing
 - (3) Text effects
 - (4) Standard toolbar
40. On which toolbar can you find format painter tool?
- (1) Standard toolbar
 - (2) Formatting toolbar
 - (3) Drawing toolbar
 - (4) Picture toolbar

ETG INTERACTIVE SECTION

41. A flowchart that run a program, that accepts 20 numbers and find their product is-



- (3) Both (1) and (2) (4) None of these

42. Here, using the given table, write an algorithm-

x	y	z
10		
	20	
		5
30		
	10	
		35
10		
	35	
		10

- (1) $x = 10$
 $y = 20$
 $z = 5$
 $x = x + y + z$
 $y = x - z$
 $z = z + x - y$
 $x = y$
 $y = x$
 $z = z$
 Print x, y, z
- (2) $x = 10$
 $y = 20$
 $z = 5$
 $x = x + z$
 $y = x - z$
 $z = x + y$
 $x = z$
 $y = x + 1$
 $z = x$
 Print x, y, z

- (3) $x = 10$ (4) None of these
 $y = 20$
 $z = 5$
 $x = x + y$
 $y = x - y$
 $z = z + x$
 $x = y$
 $y = z$
 $z = x$
 Print x, y, z

43. We have given an algorithm, as

```
Total = 0
for I = 1 to 25
  Read mark
  Total = total + mark
Endfor
Average = total/25
```

Write average

The given algorithm represents the information about

- (1) Average mark obtained
 (2) Total marks
 (3) Average number of students
 (4) None of these
44. The pseudocode, which represents the algorithm given in the previous question is correctly displayed as

(1)

Input	Processing	Output
Few Numbers	Store the results Calculate the total Calculate the average Display all	Average

(2)

Input	Processing	Output
Three Numbers	Accept 25 numbers Calculate the total Store results in sum Calculate the average Display the average	Average

(3)

Input	Processing	Output
25 Numbers	Accept 125 numbers Calculate the average Store the results in sum	Average

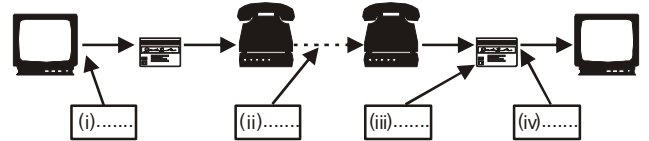
- (4) None of these

45. Given the following code fragment

```
int A [ ];
int i = 0;
A = new int A[4];
while (i < 4)
{ A [i] = 10;
  i = i + 1;
}
```

what is the value of A[3]?

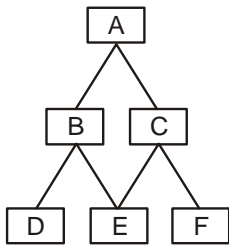
- (1) 0 (2) 3
 (3) 10 (4) 1
46. Consider the following diagram:



Which of the following is/are suitable for filling the blanks in the boxes?

- (1) (i) Analog Signals (ii) Digital Signals
 (iii) Modem (iv) Analog Signals
- (2) (i) Digital Signals (ii) Analog Signals
 (iii) Hub (iv) Digital Signals
- (3) (i) Digital Signals (ii) Analog Signals
 (iii) Modem (iv) Digital Signals
- (4) (i) Analog Signals (ii) Digital Signals
 (iii) Hub (iv) Analog Signals

47. Referred to the given figure, which modules can call module E as shown in the structure chart?



- (1) A, B and C (2) B and D
 (3) B and C (4) D and F

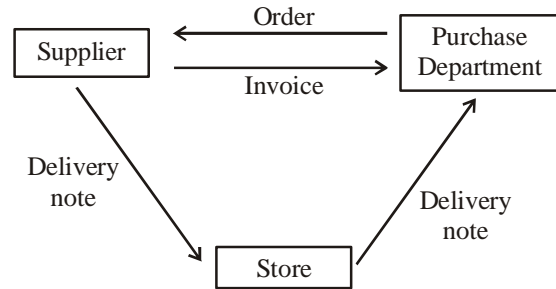
48. EBCDIC stands for

- (1) Extended Binary Coded Decimal Interchange Code
 (2) Extended Bit Code Decimal Interchange Code
 (3) Extended Bit Case Decimal Interchange Code
 (4) Extended Binary Case Decimal Interchange Code

49. The personnel who designs, programs, operates and maintains computer equipment refers to

- (1) Console-operator (2) Programmer
 (3) People ware (4) System analyst

50. Consider the following document flow diagram



From among the statements given below, identify the correct one associated with the above diagram

- (1) Supplier is an external entity for the system
 (2) Stores can be an external entity depending on the system boundary
 (3) Invoice document originates from the purchasing department
 (4) None of these



END OF THE EXAM