



EDUHEAL FOUNDATION

EDUHEAL FOUNDATION CONDUCTS 8 OLYMPIADS ANNUALLY REACHING OUT TO 3,500 + SCHOOLS

• 5 LAKH + STUDENTS • 50,000 TEACHERS AND HAVING 500 RESOURCE PERSONS

IN ENGLISH / MATHS / SCIENCE / BIOTECH / COMPUTER / G.K. / ARTS / CRICKET / FINANCE & 300 REGIONAL COORDINATORS.

WEBSITE : WWW.EDUHEALFOUNDATION.ORG • E-MAIL : INFO@EDUHEALFOUNDATION.ORG

ICO INTERNATIONAL CYBER OLYMPIAD	NISO NATIONAL INTERACTIVE SCIENCE OLYMPIAD	NIMO NATIONAL INTERACTIVE MATHS OLYMPIAD	NBTO NATIONAL BIOTECHNOLOGY OLYMPIAD	IEO INTERNATIONAL ENGLISH OLYMPIAD	IGO INTERNATIONAL G.K. OLYMPIAD	BIFO BSE INTERNATIONAL FINANCE OLYMPIAD
---	---	---	--	---	--	--

Level - 1 : All Level-1 successful* participants will get certificate, aptitude report and online subscription, and school toppers will be eligible for school hero medals.

Level - 2 : School toppers* will be selected for level-2-National level - online computer based interactive test held at exam centres all over India. Besides selection for level-3, winner will get merit certificate, medals, educational CDs, laptop, scholarship and other prizes. There is no level 2 in G.K. and Biotech.

Level - 3 : Toppers will qualify# for level 3-International level-where you will compete with students globally. Get selected for EHF's International Olympiad training camp. Only Indian organization giving students exposure to global competitions. Represent India & win laurels. Guidance by top scientists. Prizes ranges from cash (millions of \$), gadgets, foreign trips, publicity, fame, scholarships, Internships, conference participation and more. Level 3 is in Maths, Science & Cyber only.

* # See prospectus website for details

- You are allowed additional 10 minutes to fill the required details in the **RESPONSE SHEET (OMR)**. **STUDENTS OF CLASS 1 & 2 HAVE TO UNDERLINE** THE CORRECT ANSWER IN THE QUESTION PAPER ITSELF. THEY ARE NOT REQUIRED TO USE THE RESPONSE SHEET (OMR). THEY HAVE TO FILL THEIR NAME, ROLL NUMBER, CLASS, SCHOOL NAME IN THE SPACE PROVIDED IN THE QUESTION PAPER.
- The question paper is made as per syllabus guidelines & pattern given in the information Booklet. The Question Paper for Classes 1 to 6 contains 25 Questions each to be answered in 40 minutes. The Question paper for classes 7 to 12 contains 50 Questions each to be answered in 60 minutes. All questions are compulsory. Further instructions are given in the instruction letter to the teacher.
- Use the response sheet to mark your responses by darkening the required circle. The response sheet has to be returned to the foundation, duly filled in. The student can retain the Question Paper except for classes 1 and 2.

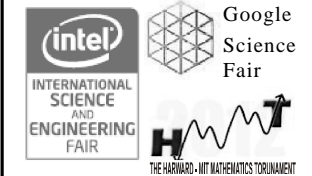
**INTERNATIONAL
CYBER
OLYMPIAD**

ICO

**7
Class**

**A1
Paper
Code**

LEVEL - 1



MENTAL ABILITY

- Raju is heavier than Mehak. Tom is lighter than Pari. Tony is heavier than Pari but lighter than Mehak. Who amongst them is the heaviest ?
(1) Mehak (2) Raju
(3) Tom (4) None of these

- Reena worked over the weekend.

Day	Hours
Saturday	4.5
Sunday	2

How many hours did Reena work on saturday than on sunday?

- (1) 3 hours (2) 2.5 hours

- (3) 1.5 hours (4) None of these

- 4, 9, 25, _____, 121, 169, 289, 361

- (1) 49 (2) 81
(3) 64 (4) None of these

Inter-related words are given. From the given option choose a word that belongs to the same group

- Calf : Kid : Cub :

- (1) Infant (2) Young
(3) Larva (4) Animal

- Hat : Coat : Trousers:

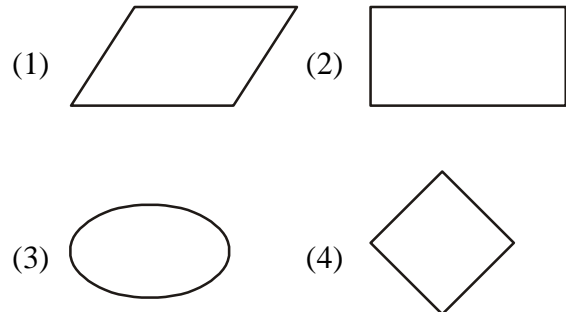
- (1) Dress (2) Tailor
(3) Shirt (4) Gentleman

6. Stool : Table : Chair :
- (1) Office (2) Carpet
(3) Bench (4) Furniture
7. Volley ball : Hockey : Football :
- (1) Athletics (2) Games
(3) Baseball (4) Aquatics
8. Find the odd term out
- (1) Pistol (2) Gum
(3) Rifle (4) Cannon
9. A group of friends planned to go for a picnic. They contributed as much amount as the number of people in the group. The total amount collected is ₹ 1764. How many people are there in the group?
- (1) 42 (2) 32
(3) 38 (4) 48
10. Three out of every ten students in the fifth grade own a computer. There are 50 students in the fifth grade. How many fifth grade students own a computer?
- (1) 10 students (2) 15 students
(3) 20 students (4) None of these

COMPUTERS

11. The CPU chip used in the computer is partially made of:
- (1) Copper (2) Iron
(3) Gold and Silver (4) Silica
12. Which is widely used in academic testing?
- (1) MICR (2) POS
(3) OCR (4) OMR
13. The computer code for the interchange of information between terminals
- (1) ASCII (2) ABD
(3) EBCDIC (4) All of the above

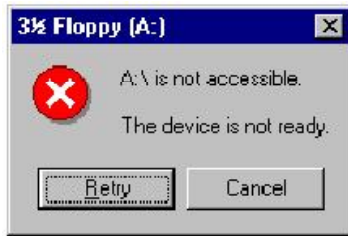
14. Leibniz developed a mechanical device in the 17th century that could add, subtract, multiply, divide and find square roots.
- (1) True (2) False
(3) Can't say (4) None of these
15. A way of condensing programme to pack the most instructions into the smallest space is known as:
- (1) Crunching (2) Control Panel
(3) Concatenation (4) Cybernation
16. What does a joystick do?
- (1) Controls the movement of a cursor on a video screen
(2) Controls the movement of mouse on a video screen
(3) Can't say
(4) None of these
17. Which of the following symbols will be used at the end of the flow chart?



18. Which of the following doesn't allow multiple users or devices to share one communication line?
- (1) Doubleplexer (2) Multiplexer
(3) Concentrator (4) None of these
19. The default paper size and orientation is:
- (1) 8.5" × 11" Portrait
(2) 9.5" × 12" Portrait
(3) 8.5" × 12" Portrait
(4) None of these

- 20.** F5 key helps in displaying the find and the replaced dialog box.
- (1) True
 - (2) False
 - (3) Can't say
 - (4) None of these
- 21.** In MS-Word, _____command is used to correct spelling mistakes.
- (1) F4
 - (2) F6
 - (3) F7
 - (4) F8
- 22.** Who developed the first personal computer spread sheet package called visicale?
- (1) Niklaus Wirth
 - (2) Dan Bricklin
 - (3) Bob Frankston
 - (4) Both (2) and (3)
- 23.** There are _____ columns in spread sheet.
- (1) 128
 - (2) 256
 - (3) 200
 - (4) 150
- 24.** A number cannot include the following character.
- (1) 3
 - (2) Comma (,)
 - (3) %
 - (4) Streak (8)
- 25.** When was the X-Window system born?
- (1) 1984
 - (2) 1989
 - (3) 1988
 - (4) 1990
- 26.** Which of the following terms applies to communication between separate computer systems?
- (1) Computer literacy
 - (2) Power supply
 - (3) Applications software
 - (4) Connectivity
- 27.** A collection of wires that connects several devices is called:
- (1) Link
 - (2) Bus
 - (3) Bidirectional wires
 - (4) Cables
- 28.** Memories in which any location can be reached in a fixed (and short) amount of time after specifying its address is called
- (1) Sequential-access memory
 - (2) Random-access memory
 - (3) Secondary memory
 - (4) Mass storage
- 29.** A device or peripheral equipment which is not in direct communication with CPU of a computer is known as:
- (1) On-line device
 - (2) Off-line device
 - (3) Channel
 - (4) Intelligent terminal
- 30.** Which of the following is used both for input and output ?
- (1) Graph plotter
 - (2) Teletype terminal
 - (3) Line printer
 - (4) All of these
- 31.** Which of the following require large computer memory?
- (1) Imaging
 - (2) Graphics
 - (3) Voice
 - (4) All of these
- 32.** A modern digital computer has:
- (1) Extremely high speed
 - (2) Large memory
 - (3) Almost unlimited accuracy
 - (4) All of the these

33. The error message given below usually means that

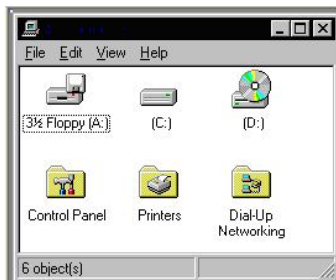


- (1) The disk is not in the drive
- (2) The disk is not formatted
- (3) The drive is broken and must be replaced
- (4) The media in the drive was formatted for a different type of computer

34. In an Explorer or Computer window the files in the right pane are sorted by Name. To sort the right pane contents to list the largest files first, you would _____.

- (1) Double-click on the Size heading
- (2) From the menu bar select View > by Size
- (3) From the toolbar click on the Size button
- (4) None of these

35. This is the window of



- (1) MS Excel
- (2) My Computer
- (3) My Documents
- (4) None of these

36. During the data gathering phase of the system analysis step:

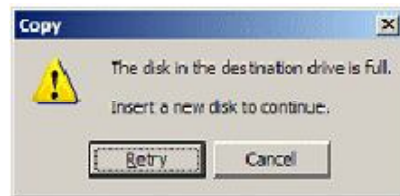
- (1) Program flow-charts are often prepared
- (2) The system design specifications are outlines

- (3) A number of specialized forms may be prepared
- (4) A standards manual is of little use

37. When the original location and the destination location are on the same drive (the drive for removable media this time), the folder is..... when you drag. If the destination location is on a different drive, the folder is

- (1) Moved, copied
- (2) Copied, moved
- (3) Rename, moved
- (4) None of these

38. While copying a file if you see a dialog box as shown at the right, what you need to do?



- (1) Leave the message open while you delete or move files/folders on the destination disk to make more space. Then click the Retry or Try Again button.
- (2) Choose Cancel and find a different location for your copy/move.
- (3) Choose Cancel and select a smaller set of files and then try again
- (4) All of these

39. Which keystroke will take you at the beginning or the end of a long document?

- (1) Ctrl+PageUp and Ctrl+PageDown
- (2) Ctrl+Home and Ctrl+End
- (3) Both (1) and (2)
- (4) None of these

40. How many margins are there on a page?

- (1) Two (header and footer)
- (2) Four (top, bottom, right, left)
- (3) Two (landscape and Portrait)
- (4) Two (top and bottom)



41. The given figure displays a
- (1) WordArt Toolbar
 - (2) WordArt gallery
 - (3) Character spacing
 - (4) Text Alignment

42. A program to check whether age is greater than 18 or not is given below. So, it is best represented as-

(1) CLS
 Input "Enter your age", age
 If age >= 18 then
 Print "You are adult",
 else

Print "You are not an adult"
 end

(2) CLS
 Input "Enter your age", age
 If age >= 8, then.
 Print "You are adult",
 else
 Print "You are not an adult"
 end

(3) CLS
 Input "Enter your age", age
 If age <= 18 then,
 Print "You are adult",
 else
 Print you are not an adult",
 end

(4) None of these

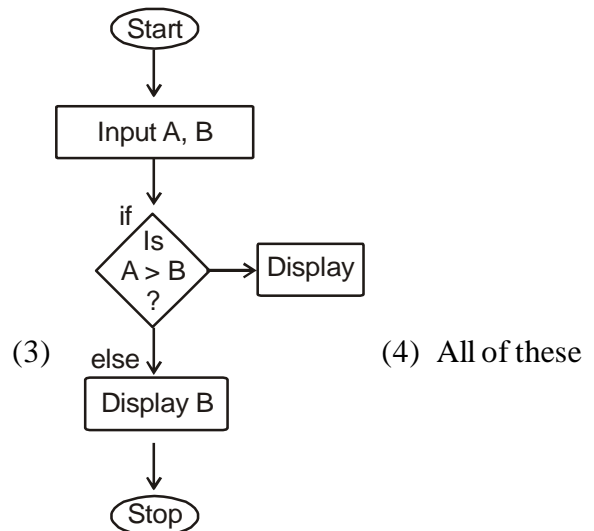
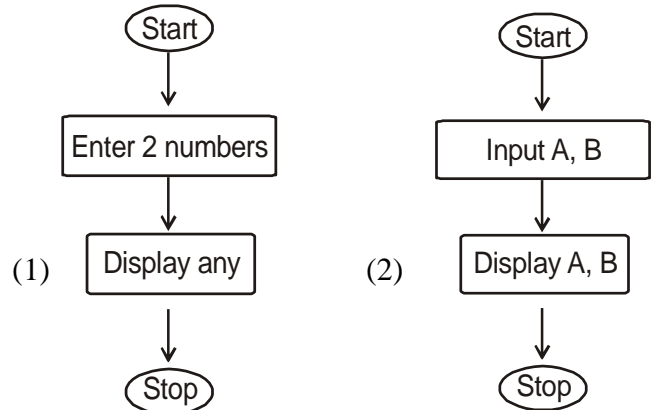
43. Which of the following is a storage device?

- (1) Hard Disk
- (2) USB Disk
- (3) Floppy Disk
- (4) All of these

44. Which of the following performs arithmetic and logical operations?

- (1) CU
- (2) PU
- (3) ALU
- (4) Memory

45. A program to enter 2 numbers and print the bigger of the two.



46. How can you specify cell range from A9 to A99 in excel?

- (1) (A9, A99)
- (2) (A9 to A99)
- (3) (A9 ; A99)
- (4) (A9 - A99)

47. Which of the following is a presentation program?

- (1) MS-Word
- (2) MS-Excel
- (3) MS-Power Point
- (4) MS-Access

48. ISP stands for

- (1) International service provider
- (2) Internet service provider
- (3) Internet service presenter
- (4) None of these

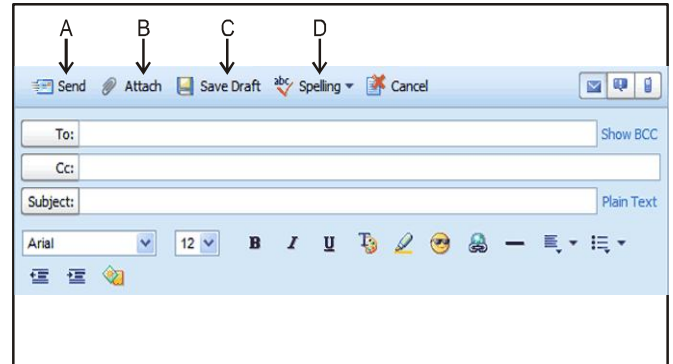
49. The outputs of the programme given below are-

- 10 PRINT "1"
- 20 GOTO 40
- 30 PRINT "2"
- 40 PRINT "3"

- (1) 4
- 2
- (3) 1
- 2
- 3

- (2) 1
- 3
- (4) None of these

50. If you are typing a mail and electricity has gone, afterwards if you open your email where will you find your mail which you typed before?



- (1) A
- (2) B
- (3) C
- (4) D



END OF THE EXAM