



EDUHEAL FOUNDATION

EDUHEAL FOUNDATION CONDUCTS 8 OLYMPIADS ANNUALLY REACHING OUT TO 3,500 + SCHOOLS

• 5 LAKH + STUDENTS • 50,000 TEACHERS AND HAVING 500 RESOURCE PERSONS

IN ENGLISH / MATHS / SCIENCE / BIOTECH / COMPUTER / G.K. / ARTS / CRICKET / FINANCE & 300 REGIONAL COORDINATORS.

WEBSITE : WWW.EDUHEALFOUNDATION.ORG • E-MAIL : INFO@EDUHEALFOUNDATION.ORG

ICO INTERNATIONAL CYBER OLYMPIAD	NISO NATIONAL INTERACTIVE SCIENCE OLYMPIAD	NIMO NATIONAL INTERACTIVE MATHS OLYMPIAD	NBTO NATIONAL BIOTECHNOLOGY OLYMPIAD	IEO INTERNATIONAL ENGLISH OLYMPIAD	IGO INTERNATIONAL G.K. OLYMPIAD	BIFO BSE INTERNATIONAL FINANCE OLYMPIAD
---	---	---	--	---	--	--

Level - 1 : All Level-1 successful* participants will get certificate, aptitude report and online subscription, and school toppers will be eligible for school hero medals.

Level - 2 : School toppers* will be selected for level-2-National level - online computer based interactive test held at exam centres all over India. Besides selection for level-3, winner will get merit certificate, medals, educational CDs, laptop, scholarship and other prizes. There is no level 2 in G.K. and Biotech.

Level - 3 : Toppers will qualify# for level 3-International level-where you will compete with students globally. Get selected for EHF's International Olympiad training camp. Only Indian organization giving students exposure to global competitions. Represent India & win laurels. Guidance by top scientists. Prizes ranges from cash (millions of \$), gadgets, foreign trips, publicity, fame, scholarships, Internships, conference participation and more. Level 3 is in Maths, Science & Cyber only.

*# See prospectus-website for details

- You are allowed additional 10 minutes to fill the required details in the **RESPONSE SHEET (OMR)**. **STUDENTS OF CLASS 1 & 2 HAVE TO UNDERLINE** THE CORRECT ANSWER IN THE QUESTION PAPER ITSELF. THEY ARE NOT REQUIRED TO USE THE RESPONSE SHEET (OMR). THEY HAVE TO FILL THEIR NAME, ROLL NUMBER, CLASS, SCHOOL NAME IN THE SPACE PROVIDED IN THE QUESTION PAPER.
- The question paper is made as per syllabus guidelines & pattern given in the information Booklet. The Question Paper for Classes 1 to 6 contains 25 Questions each to be answered in 40 minutes. The Question paper for classes 7 to 12 contains 50 Questions each to be answered in 60 minutes. All questions are compulsory. Further instructions are given in the instruction letter to the teacher.
- Use the response sheet to mark your responses by darkening the required circle. The response sheet has to be returned to the foundation, duly filled in. The student can retain the Question Paper except for classes 1 and 2.

INTERNATIONAL CYBER OLYMPIAD

ICO

9
Class

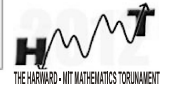
A1
Paper
Code

LEVEL - 1

Academic Partner — WWW.EDUSYS.IN

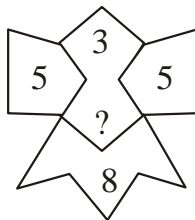


Google
Science
Fair



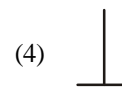
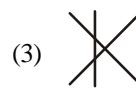
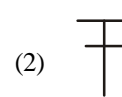
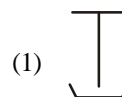
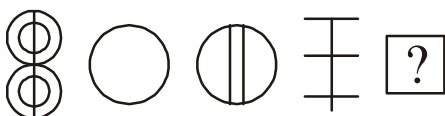
MENTAL ABILITY

1. Find the missing number



- (1) 6 (2) 8
(3) 7 (4) 9

2. Following figures are in a serial, find the missing figure.



- Niru was facing the east. She turned right and walked 20 meter, then turned to her right again and walked 20 meter. She then turned 45 degree towards her left and went straight to cover 35 meter. In which direction is she from her starting point is she?
(1) South-West (2) East-South
(3) North-East (4) West-North
- Pointing to a photograph of a boy Suresh said, "He is the son of the only son of my mother." How is Suresh related to that boy?
(1) Brother (2) Uncle
(3) Cousin (4) Father

5. Amit said, "this girl is the wife of the grandson of my mother". How is Amit related to the girl?
 (1) Father (2) Grand father
 (3) Husband (4) Father-in-law
6. Which number will continue in the given series?
 2, 4, 12, 48, _____
 (1) 240 (2) 96
 (3) 420 (4) 288
7. The average age of 24 students in a class is 15 years. If the teacher's age is included, the average increases by one. What is the age of the teacher?
 (1) 60 years (2) 45 years
 (3) 40 years (4) None of these
8. X is 25 cm to the west of B, C is 40 cm to the east of X and D is 45 cm to the west of B. If all are standing along a straight line, how far is X from D?
 (1) 15 cm (2) 60 cm
 (3) 20 cm (4) None of these
9. How many pairs of letters are there in the word 'CARROT' with as many letters as between the word as in the alphabet?
 (1) 1 (2) 2
 (3) 3 (4) None of these
10. If TOUR is written as 1234, CLEAR is written as 56784 and SPARE is written as 90847, find the code for CARE.
 (1) 5874 (2) 5847
 (3) 5247 (4) None of these
15. Main storage is also called?
 (1) Accumulator (2) Control Unit
 (3) Register Unit (4) Primary Memory
16. Ascending order of a data hierarchy is
 (1) Bit-byte-record-field-file-database
 (2) Bit-byte-field-record-file-database
 (3) Bit-byte-record-file-database
 (4) None of these
17. An IP address contains four sets of numbers ranging from:
 (1) 1 to 100 (2) 1 to 1000
 (3) 0 to 255 (4) 1 to 500
18. A half byte is known as
 (1) Data (2) Bit
 (3) Half byte (4) Nibble
19. A micro computer has primary memory of 640k. What is the exact number of bytes contained in this memory?
 (1) 64×1000 (2) 640×100
 (3) 640×1024 (4) None of these
20. A mouse is connected to
 (1) LPT1 port (2) LPT2 port
 (3) The serial port (4) None of these
21. A set of programs that handle firm's data base responsibilities is called a :
 (1) Data Base Management System (DBMS)
 (2) Data Base Processing System (DBPS)
 (3) Data Management system (DMS)
 (4) All of these
22. Which one of the following is not a valid type of Translator?
 (1) Assembler (2) Compiler
 (3) Foxpro (4) Interpreter
23. How can you highlight text without using the mouse?
 (1) Use the arrow keys while holding down a Shift key
 (2) Use the arrow keys while holding down a Ctrl key
 (3) Use the F5 key
 (4) It is impossible
24. Which is the true statement?
 (1) Multimedia computers do not require large amount of memory.
 (2) Flash is a software used to create multimedia effects, like movies.
 (3) MS Word is a software used to create multimedia effects, like movies.
 (4) GIF is an image compression standard used for motion pictures.

COMPUTERS

11. After copying the content how many times can you paste?
 (1) 1 (2) 16
 (3) 32 (4) Many times
12. Which is a valid statement?
 (1) 1 KB = 1024 bytes (2) 1 MB = 1024 bytes
 (3) 1 KB = 1000 bytes (4) 1 MB = 1000 bytes
13. MICR stands for :
 (1) Magnetic Ink Character Reader
 (2) Magnetic Ink Code Reader
 (3) Magnetic Ink Case Reader
 (4) None of these
14. ASCII stands for
 (1) American Standard Code for Information Interchange
 (2) American Scientific Code for International Interchange
 (3) American Standard Code for Intelligence Interchange
 (4) None of these

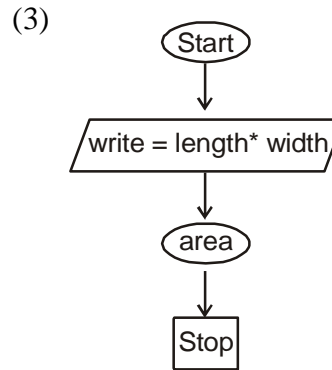
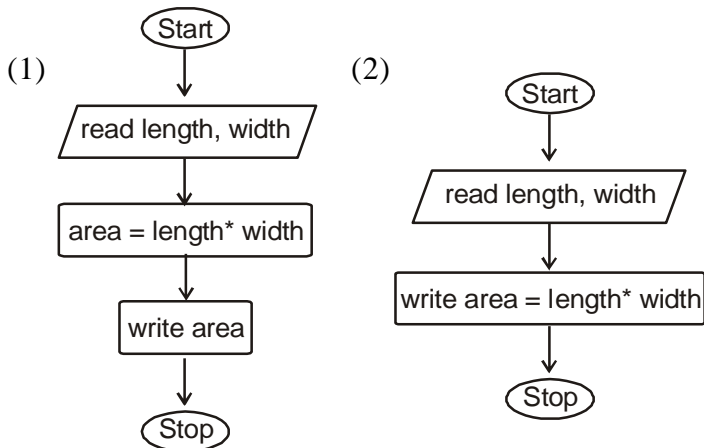
25. While working in MS-Word, by pressing Ctrl + F
- (1) Activates the Printing process
 - (2) Pop-up's the Find dialog box
 - (3) Pop-up's Page setup dialog box
 - (4) Pop-up's File open dialog box
26. Which is the shortcut key for 'spell check' in MS-Word?
- (1) F8
 - (2) F9
 - (3) F7
 - (4) F10
27. Which of the following is (are) the benefits of software reusability?
- (1) Accelerated development
 - (2) Increased reliability
 - (3) Effective use of specialists
 - (4) All of these
28. Choose the correct definition for the "Reply to all" e-mail function
- (1) Will send a reply message for the selected message to every entry in the address book
 - (2) Generates a forward message from a current incoming message
 - (3) Generates a reply message address to the sender of the selected message
 - (4) Generates a reply message addressed to all of the recipients of the selected message.
29. While working in MS-Word, by pressing Ctrl + F10 :
- (1) Maximise the selected window
 - (2) Restore a selected window
 - (3) Both 1 and 2
 - (4) None of these
30. Which of the following is true?
- (1) Fields are composed of bytes
 - (2) Records are composed of fields
 - (3) Fields are composed of characters
 - (4) All of these
31. The proper definition of a modern digital computer is :
- (1) An electronic automated machine that can solve problems involving words and numbers
 - (2) A more sophisticated and modified electronic pocket calculator
 - (3) Any machine that can perform mathematical operations
 - (4) A machine that works on binary code
32. A modern electronic computer is a machine that is meant for
- (1) Doing quick mathematical calculations
 - (2) Input, storage, manipulation and outputting of data
 - (3) Electronic data processing
 - (4) Performing repetitive tasks accurately
33. An integrating circuit is :
- (1) A complicated circuit
 - (2) An integrating device
 - (3) Much costlier than a single transistor
 - (4) Fabricated on a tiny silicon chip
34. What is the quickest way to select an entire worksheet?
- (1) Choose Edit → Select all from the menu.
 - (2) Click on the first column, press Ctrl and then click on the last column
 - (3) Click on the first column, press Shift and then click on the last column
 - (4) Click on the first rectangle box on the upper left corner where column heading and row heading meet.
35. Which of the following methods will not enter data in a cell?
- (1) Pressing the Esc key
 - (2) Pressing an arrow key
 - (3) Pressing the Tab key
 - (4) All of these
36. All formulae in Excel starts with
- (1) %
 - (2) +
 - (3) =
 - (4) None of these
37. You can add a hyperlink to your worksheet by pressing
- (1) Alt + K
 - (2) Ctrl + H
 - (3) Ctrl + K
 - (4) Ctrl + Shift + K
38. You can group non continuous worksheets with
- (1) The Alt + Enter key
 - (2) The Ctrl key and mouse
 - (3) The Shift key and the mouse
 - (4) None of these
39. Which of the following are the two main components of the CPU?
- (1) Control unit and registers
 - (2) Registers and main memory
 - (3) Control unit and ALU
 - (4) None of these
40. The first machine to successfully perform a long series of arithmetic and logical operations was:
- (1) ENIAC
 - (2) Mark-I
 - (3) Analytic engine
 - (4) UNIVAC-I

41. The algorithm to read three numbers and find their product is best represented as-

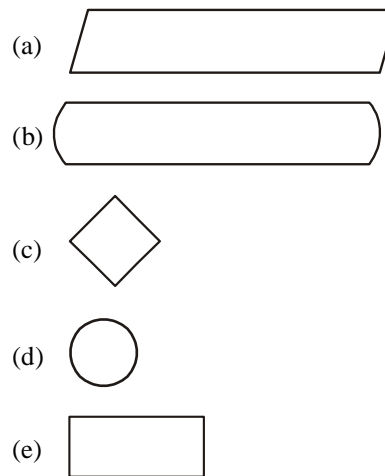
Input	Processing	Output
Three numbers	Accept number	Product
(Number 1	Calculate product	
Number 2	Store results in Product	
Number 3)	Display product	

- (1) Step 1- Start
Step 2- read 1, 2, 3
Step 3- product num1 * num2 * num3
Step 4- write product
Step 5- Stop
- (2) Step 1- Start
Step 2- read num1, num2, num3
Step 3- product num1 * num2 * num3
Step 4- write product
Step 5- Stop
- (3) Both (1) and (2)
- (4) None of these

42. Program to accept the length and width of a rectangle and calculate its area is-



- (3) None of these
43. The given symbols are used in flowcharts



The purpose associated with these symbols are-

- (1) (a) Process symbol
(b) Flow control
(c) Decision symbol
(d) Terminate symbol
(e) Input/Output symbol
- (2) (a) Process symbol
(b) Decision symbol
(c) Flow control
(d) Terminator symbol
(e) Connector symbol
- (3) (a) Input/Output symbol
(b) Terminator symbol
(c) Decision symbol
(d) Connector symbol
(e) Process symbol
- (4) None of these

44. The list of stages are mentioned below, to solve a general problem. The appropriate step 3 is

Step 1: Define the problem

Step 2 : Analyse the problem

Step 3 :

Step 4: Select and justify the optimal solutions

Step 5: Implementation and review

- (1) Propose and evaluate possible solution
- (2) Try to solve the problem
- (3) Write few more algorithm
- (4) None of these

45. Create a trace table to determine the output of the following algorithm

Step 1: Set $x \leftarrow 5$

Step 2 : Set $y \leftarrow 10$

Step 3 : Set $z \leftarrow 3$

Step 4: Set $x \leftarrow x + y$

Step 5: Set $y \leftarrow x + z$

Step 6: Set $z \leftarrow x + y + z$

Step 7: Display x, y, z

(1)

x	y	z
5		
	10	
		3
15		
	18	
		36

(2)

x	y	z
5	10	3
		36
	18	
15		

(3)

x	y	z
36		
	18	
		15
5		
	10	
		3

- (4) None of these

46. The appropriate programming term use for the given statement is-

“When the required results are not given by the program due to bad reasoning by the programmer.”

- (1) Syntax error
- (2) Bug
- (3) Logic error
- (4) Source code

47. The correct steps in implementing a program is

- (1) * Creating source code
* Compiling
* Linking
* Executing
* Maintaining
- (2) * Creating source code
* Executing
* Maintaining
* Compiling
* Linking
- (3) * Maintaining
* Compiling
* Creating source code
* Linking
* Executing
- (4) None of these

48. Which of the following is a voice band channel?

- (1) Telephone line
- (2) Telegraph line
- (3) Coaxial cable
- (4) All of these

49. Identify the odd term against the following group:

- (1) Coaxial cable
- (2) Optical fibre
- (3) Twisted pair wire
- (4) Microwave

50. Which of the following communication modes support two way traffic but in only one direction at a time?

- (1) Simplex
- (2) Half-duplex
- (3) Three quarters
- (4) All of these



END OF THE EXAM