



EDUHEAL FOUNDATION

EDUHEAL FOUNDATION CONDUCTS 8 OLYMPIADS ANNUALLY REACHING OUT TO 3,500 + SCHOOLS

• 5 LAKH + STUDENTS • 50,000 TEACHERS AND HAVING 500 RESOURCE PERSONS

IN ENGLISH / MATHS / SCIENCE / BIOTECH / COMPUTER / G.K. / ARTS / CRICKET / FINANCE & 300 REGIONAL COORDINATORS.

WEBSITE : WWW.EDUHEALFOUNDATION.ORG • E-MAIL : INFO@EDUHEALFOUNDATION.ORG

ICO INTERNATIONAL CYBER OLYMPIAD	NISO NATIONAL INTERACTIVE SCIENCE OLYMPIAD	NIMO NATIONAL INTERACTIVE MATHS OLYMPIAD	NBTO NATIONAL BIOTECHNOLOGY OLYMPIAD	IEO INTERNATIONAL ENGLISH OLYMPIAD	IGO INTERNATIONAL G.K. OLYMPIAD	BIFO BSE INTERNATIONAL FINANCE OLYMPIAD	NIPO NATIONAL IIT-PMT OLYMPIAD
---	---	---	---	---	--	--	---

EHF
INTERNATIONAL
CYBER
OLYMPIAD

ICO

11
Class

A1
Paper Code

Level - 1 : All Level-1 successful* participants will get certificate, aptitude report and online subscription, and school toppers will be eligible for school hero medals.

Level - 2 : School toppers* will be selected for level-2-National level - online computer based interactive test held at exam centres all over India. Besides selection for level-3, winner will get merit certificate, medals, educational CDs, laptop, scholarship and other prizes. There is no level 2 in Art, G.K. and Biotech.

Level - 3 : Toppers will qualify# for level 3-International level-where you will compete with students globally. Get selected for EHF's International Olympiad training camp. Only Indian organization giving students exposure to global competitions. Represent India & win laurels. Guidance by top scientists. Prizes ranges from cash (millions of \$), gadgets, foreign trips, publicity, fame, scholarships, Internships, conference participation and more. Level 3 is in Maths, Science & Cyber only.

*# See prospectus/website for details.

- You are allowed additional 10 minutes to fill the required details in the **RESPONSE SHEET (OMR)**. **STUDENTS OF CLASS 1 & 2 HAVE TO UNDERLINE** THE CORRECT ANSWER IN THE QUESTION PAPER ITSELF. THEY ARE NOT REQUIRED TO USE THE RESPONSE SHEET (OMR). THEY HAVE TO FILL THEIR NAME, ROLL NUMBER, CLASS, SCHOOL NAME IN THE SPACE PROVIDED IN THE QUESTION PAPER.
- The question paper is made as per syllabus guidelines & pattern given in the information Booklet. The Question Paper for Classes 1 to 6 contains 25 Questions each to be answered in 40 minutes. The Question paper for classes 7 to 12 contains 50 Questions each to be answered in 60 minutes. All questions are compulsory. Further instructions are given in the instruction letter to the teacher.
- Use the response sheet to mark your responses by darkening the required circle. The response sheet has to be returned to the foundation, duly filled in. **THE STUDENT CAN RETAIN THE QUESTION PAPER EXCEPT FOR CLASSES 1 AND 2.**

L E V E L - 1

Academic Partner — WWW.EDUSYS.IN

EtG
BOOKS
Creating
SUCCESS
Stories

A UNIT OF EDUSYS LEARNING MEDIA

ALICE • IIT • PMT • OLYMPIAD

intel

INTERNATIONAL
SCIENCE
AND
ENGINEERING
FAIR

Google
Science
Fair

THE HARVARD - MIT MATHEMATICS TOURNAMENT

ORACLE ThinkQuest
EDUCATION FOUNDATION

SECTION A : MENTAL ABILITY

- Given Set : (256, 64, 16), Choose the similar set?
(1) (160, 40, 10) (2) (64, 32, 8)
(3) (144, 36, 9) (4) None of these
- If $Z = 52$ and $ACT = 48$, then BAT will be equal to
(1) 39 (2) 41 (3) 46 (4) None of these

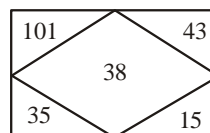
Direction : Q. (3-4) In certain code language

- 'pic vic nic' means 'winter is cold'.
 - 'to nic re' means 'summer is hot'
 - 're pic boo' means 'winter and summer';
 - 'vic tho pa' means 'nights are cold'.
- Which word in that language means 'summer'?
(1) nic (2) re (3) to (4) None of these
 - Which of the given statements is superfluous?
(1) Only A (2) Only D
(3) Both A and D (4) Neither A nor D

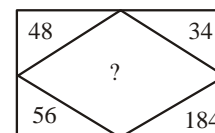
Direction : (Q. 5) Read the following information carefully and answer the question based on it:

A family consists of six members P, Q, R, X, Y and Z. Q is the son of R but R is not mother of Q. P and R are a married couple. Y is the brother of R. X is the daughter of P. Z is the brother of P.

- Who is the brother in-law of R ?
(1) P (2) Z (3) Y (4) None of these
- I start from my home and go 2 km straight. Then, I turn towards my right and go 1 km. I turn again towards my right and go 1 km again. If I am north-west from my house, then in which direction did I go in the beginning?
(1) North (2) South (3) West (4) None of these
- Find the missing term by following pattern A.



A

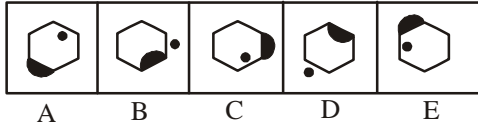


B

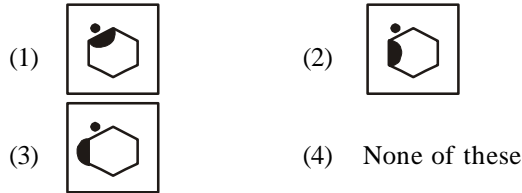
- (1) 127 (2) 142 (3) 158 (4) None of these

Direction : The following question consists of five figure marked A, B, C, D and E called the Problem Figures followed by three other figures marked a, b, and c called the Answer Figures. Select a figure from amongst the Answer Figures which will continue the same series as established by the five problem Figures.

8. Problem figures

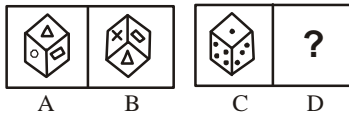


Answer figures

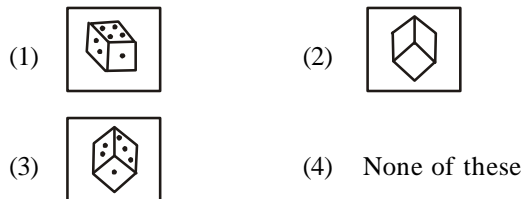


Direction : Given question consist of two sets of figures A, B, C and D constitute the problem set while figures (1), (2) and (3) constitute the answer set. There is a definite relationship between figures A and B. Establish a similar relationship between figures C and D by choosing a suitable figure (4) from the answer set.

9. Problem set

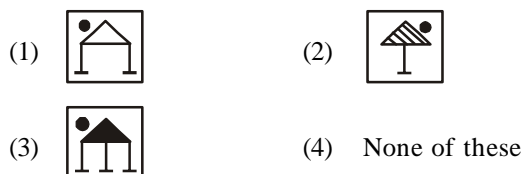
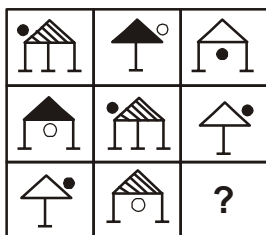


Answer set

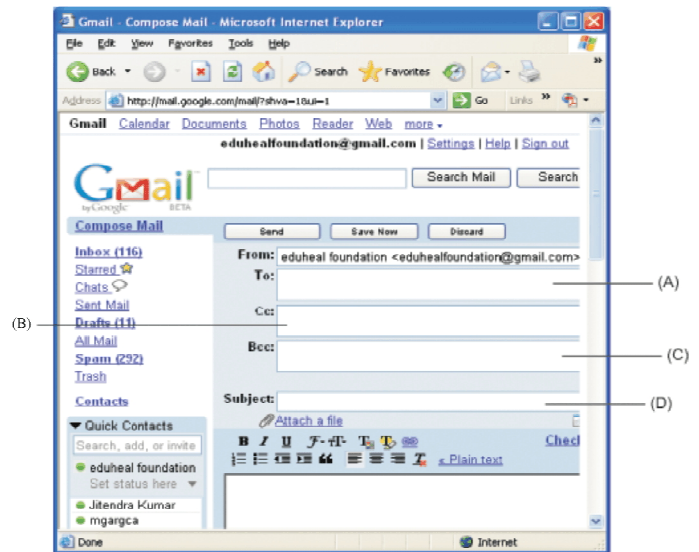


Direction : In the following questions, find out which of the answer figures (1), (2) and (3) completes the figure-matrix?

10.



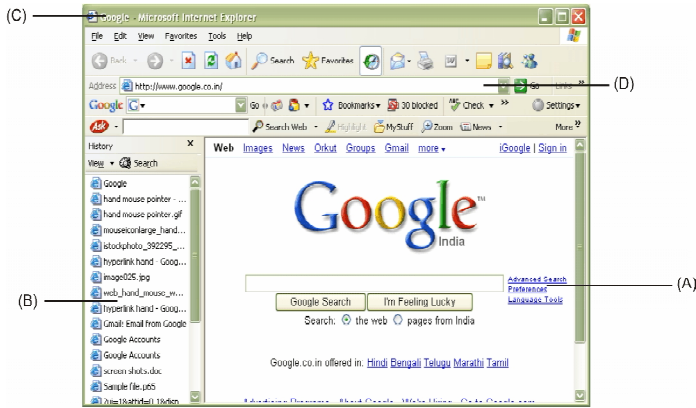
11. FTP is used for
 - (1) Uploading files only
 - (2) Downloading files only
 - (3) Both (1) and (2)
 - (4) None of these
12. How many characters can be typed in a single cell in Excel?
 - (1) 256
 - (2) 1024
 - (3) 32000
 - (4) 65535
13. Sudeep Biswas wants black background of his HTML file. Which tag he should use?
 - (1) <BODY bgcolor = "black">
 - (2) <BODY background color = "black">
 - (3) <BODY bgcolor = black>
 - (4) <BODYbackcolor = "black">
14. "I LOVE YOU" is an example of _____
 - (1) Worms
 - (2) Virus
 - (3) Search Engine
 - (4) Programming Language
- 15.



Elizabeth wants to mail same message to many friends. She does not want her friends to know the name of other recipients of the same mail. In which of the following she should write the e-mail addresses of her friends?

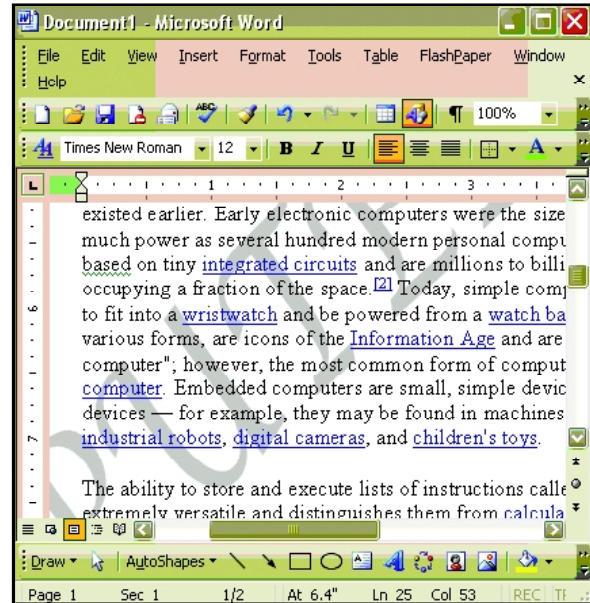
- (1) A
- (2) B
- (3) C
- (4) D

16. HTML Stands for.
- (1) Hyper Text Manipulation Language
 - (2) Hyper Text Markup Language
 - (3) Hyper Terminal Markup Language
 - (4) None of these
17. Using the diagram tell which one of the following is the history list?



- (1) A
 - (2) C
 - (3) D
 - (4) B
18. The home page of a website is to be named as
- (1) Index.HTML
 - (2) HTML / Index
 - (3) Index.geocities
 - (4) None of these
19. Dhruv wants to send mail to his friends. Which of the following he should use?
- (1) Inbox
 - (2) Compose mail
 - (3) Sent items
 - (4) None of these
20. In HTML <TH> tag is used for:
- (1) Table Row
 - (2) Table Cell
 - (3) Table Header
 - (4) Table Lines
21. Main memory stores
- (1) Data only
 - (2) Program only
 - (3) Data, Program and results or any other kind of information
 - (4) None of these

22. Jaishree made her computer project. She wants to have “Computer Project” in the background of the every sheet (as shown in fig.). This is known as

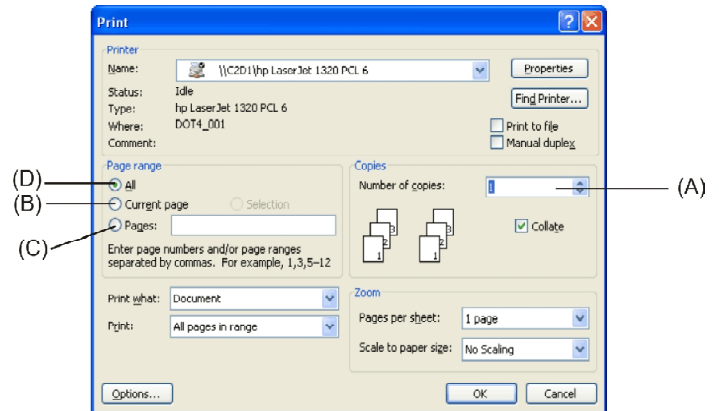


- (1) Emboss
 - (2) Engrave
 - (3) Watermark
 - (4) None of these
23. Which one of the following is not a high level language ?
- (1) FORTRAN
 - (2) PROLOG
 - (3) LISP
 - (4) None of these
24. Janvi wants to delete her file name as “Computer” permanently. What shortcut key should she use?
- (1) Shift + Delete
 - (2) Ctrl + Delete
 - (3) Alt + Delete
 - (4) None of these
25. Identify the incorrect statement?
- (1) Headers are the ones that are printed in the top margin of the page and footers are printed in the bottom margin.
 - (2) Headers and footers normally carry information like page number, date, company name etc.
 - (3) A single page document will not normally have the header or footer.
 - (4) Microsoft Word will not allow you to have header and footer on a single page document.
26. When you create a chart on a separate sheet in the same workbook it is called a
- (1) Chart sheet
 - (2) Embedded chart
 - (3) View sheet
 - (4) View chart
27. The first network that planted the seeds of Internet was –
- (1) ARPANET
 - (2) NSFnet
 - (3) U net
 - (4) Inet

28. The server on the Internet :
- (1) Host
 - (2) Repeater
 - (3) Gateway
 - (4) None of these
29. Pratima is working in Excel file. She saved and closed that file. After one hour, she wants to reopen it but she has forgotten its exact path. How she would be able to get the file quickly?
- (1) Through My Recent Document
 - (2) Through help and support
 - (3) Control Panel
 - (4) None of these
30. Which of the following is not an anti-virus?
- (1) IBM
 - (2) Norton
 - (3) McAfee
 - (4) None of these
31. Which one of the statement is true?
- (1) <HEAD> <HTML> </HEAD> </HTML>
 - (2) <HTML> <HEAD> </HEAD> </HTML>
 - (3) <HTML> <HEAD> </HTML> </HEAD>
 - (4) None of these
32. Expansion card is the part of
- (1) CPU
 - (2) Processor
 - (3) Hard disk
 - (4) None of these
33. Which of the following will not help your computer security?
- (1) Firewall
 - (2) VLAN
 - (3) Good password
 - (4) Updated software
34. Which one of the following is the most popular LAN Protocol?
- (1) RING Topology
 - (2) Ethernet
 - (3) BUS Topology
 - (4) Internet
35. Which menu option can be used to split window?
- (1) format > window
 - (2) view > window > split
 - (3) window > split
 - (4) view > split
36. Sanjay wants to use data validation. Which menu should he choose for data validation?
- (1) Tools
 - (2) Data
 - (3) Table
 - (4) Edit

37. Add, subtract, divide, multiply and logic operations are performed by:
- (1) Registers
 - (2) Control units
 - (3) ALU
 - (4) None of these
38. Pollock wrote an article.

Pollock wants to print only the page which is displayed on his monitor. Which one of the following he should choose?



- (1) B
 - (2) C
 - (3) D
 - (4) A
39. To protect a MS Excel worksheet which menu is used
- (1) Format
 - (2) Edit
 - (3) Tools
 - (4) View
40. A numbering system that is made up of 1's and 0's that the computer uses to understand all letters, numbers, symbol, lines and colours that can be entered into the computer is.
- (1) Binary code
 - (2) Uni code
 - (3) Zero-one system
 - (4) Units

INTERACTIVE SECTION

41. What do we call a network whose elements may be separated by some distance? It usually involves two or more small networks and dedicated high-speed telephone lines.
- (1) URL (Universal Resource Locator)
 - (2) LAN (Local Area Network)
 - (3) WAN (Wide Area Network)
 - (4) World Wide Web
42. The window which shows icons for things like the mouse, sound, and display is...?
- (1) My Computer
 - (2) Explorer
 - (3) Control Panel
 - (4) Taskbar

43. The main computer that stores the files that can be sent to computers that are networked together is

- (1) Clip art
- (2) Mother board
- (3) Peripheral
- (4) File server

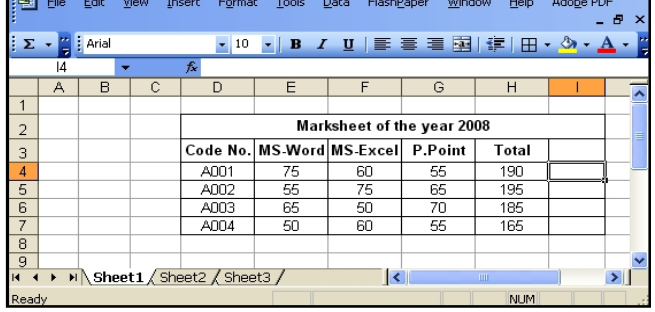
44. A computer virus that actively attacks an anti-virus program or programs in an effort to prevent detection is...

- (1) Worm
- (2) Retrovirus
- (3) Trojan
- (4) Ghost virus

45. For what purpose, can you use the shortcut key Ctrl + D in MS PowerPoint?

- (1) Duplicate the selected slide
- (2) Cut the selected slide
- (3) Edit the selected slide
- (4) None of these

46. Microsoft Excel - class10.xls

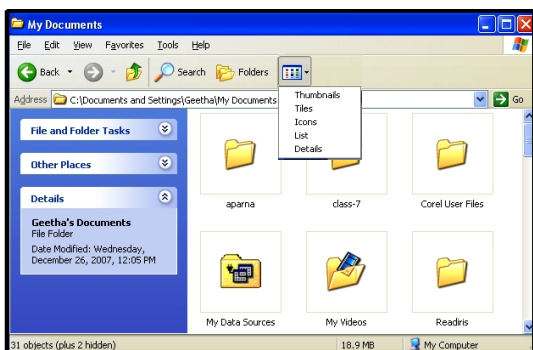


Marksheet of the year 2008				
Code No.	MS-Word	MS-Excel	P.Point	Total
A001	75	60	55	190
A002	55	75	65	195
A003	65	50	70	185
A004	50	60	55	165

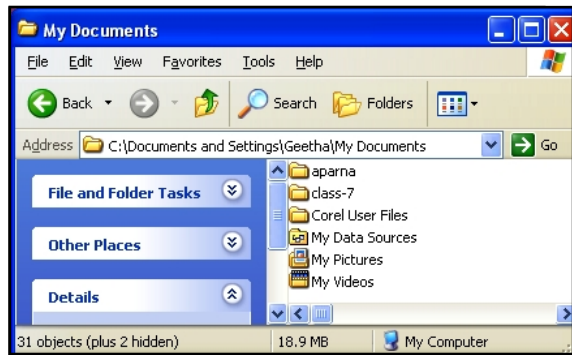
Nikhil wants to edit the text written in first row of the table. Which of the following he has to do to bring the cursor in this row?

- (1) Right click in that row
- (2) Double click in that cell/row
- (3) Both of these
- (4) None of these

47.



(i)



(ii)

Two windows (i) and (ii) are shown above. Geeta arranged her folders as shown in figure (ii). Which one of the following has been selected?

- (1) Thumbnails
- (2) Tiles
- (3) Icons
- (4) List.

48. What does MP3 stands for?

- (1) Moving picture photos and playing media
- (2) Motion picture, layer 3
- (3) Markup packets for presentation and press
- (4) None of these

49. What is Error 404?

- (1) Request timeout
- (2) Site access forbidden/password protected
- (3) Bad file request/syntax error
- (4) Site not found in HTTP

50. Which of the following is correct?

- 1. HTML tags are surrounded by two characters < and >
 - 2. HTML tags usually come in pairs
 - 3. HTML tags are not case sensitive
 - 4. <h1> defines the largest heading and <h6> defines the smallest heading
- (1) 1, 2 and 4
 - (2) 1, 2 and 3
 - (3) 1 and 2
 - (4) All 1, 2, 3, 4



END OF THE EXAM