



# EDUHEAL FOUNDATION

EDUHEAL FOUNDATION CONDUCTS 8 OLYMPIADS ANNUALLY REACHING OUT TO 3,500 + SCHOOLS

• 5 LAKH + STUDENTS • 50,000 TEACHERS AND HAVING 500 RESOURCE PERSONS

IN ENGLISH / MATHS / SCIENCE / BIOTECH / COMPUTER / G.K. / ARTS / CRICKET / FINANCE & 300 REGIONAL COORDINATORS.

WEBSITE : [WWW.EDUHEALFOUNDATION.ORG](http://WWW.EDUHEALFOUNDATION.ORG) • E-MAIL : [INFO@EDUHEALFOUNDATION.ORG](mailto:INFO@EDUHEALFOUNDATION.ORG)

<b>ICO</b> INTERNATIONAL CYBER OLYMPIAD	<b>NISO</b> NATIONAL INTERACTIVE SCIENCE OLYMPIAD	<b>NIMO</b> NATIONAL INTERACTIVE MATHS OLYMPIAD	<b>NBTO</b> NATIONAL BIOTECHNOLOGY OLYMPIAD	<b>IEO</b> INTERNATIONAL ENGLISH OLYMPIAD	<b>IGO</b> INTERNATIONAL G.K. OLYMPIAD	<b>BIFO</b> BSE INTERNATIONAL FINANCE OLYMPIAD	<b>NIPO</b> NATIONAL IIT-PMT OLYMPIAD
---	---	---	---	---	--	--	---

**Level - 1** : All Level-1 successful\* participants will get certificate, aptitude report and online subscription, and school toppers will be eligible for school hero medals.

**Level - 2** : School toppers\* will be selected for level-2-National level - online computer based interactive test held at exam centres all over India. Besides selection for level-3, winner will get merit certificate, medals, educational CDs, laptop, scholarship and other prizes. There is no level 2 in Art, G.K. and Biotech.

**Level - 3** : Toppers will qualify# for level 3-International level-where you will compete with students globally. Get selected for EHF's International Olympiad training camp. Only Indian organization giving students exposure to global competitions. Represent India & win laurels. Guidance by top scientists. Prizes ranges from cash (millions of \$), gadgets, foreign trips, publicity, fame, scholarships, Internships, conference participation and more. Level 3 is in Maths, Science & Cyber only.

\*# See prospectus/website for details

1. You are allowed additional 10 minutes to fill the required details in the **RESPONSE SHEET (OMR)**. **STUDENTS OF CLASS 1 & 2 HAVE TO UNDERLINE** THE CORRECT ANSWER IN THE QUESTION PAPER ITSELF. THEY ARE NOT REQUIRED TO USE THE RESPONSE SHEET (OMR). THEY HAVE TO FILL THEIR NAME, ROLL NUMBER, CLASS, SCHOOL NAME IN THE SPACE PROVIDED IN THE QUESTION PAPER.
2. The question paper is made as per syllabus guidelines & pattern given in the information Booklet. The Question Paper for Classes 1 to 6 contains 25 Questions each to be answered in 40 minutes. The Question paper for classes 7 to 12 contains 50 Questions each to be answered in 60 minutes. All questions are compulsory. Further instructions are given in the instruction letter to the teacher.
3. Use the response sheet to mark your responses by darkening the required circle. The response sheet has to be returned to the foundation, duly filled in. **THE STUDENT CAN RETAIN THE QUESTION PAPER EXCEPT FOR CLASSES 1 AND 2.**

**EHF**  
INTERNATIONAL  
**CYBER**  
OLYMPIAD  
**ICO**

**7**  
Class

**A1**  
Paper  
Code

## LEVEL - 1

Academic Partner — [WWW.EDUSYS.IN](http://WWW.EDUSYS.IN)

**EtG**  
BOOKS

Creating  
**SUCCESS**  
Stories

A UNIT OF EDUSYS LEARNING MEDIA  
ALICE • IIT • PMT • OLYMPIAD

intel

INTERNATIONAL  
SCIENCE  
AND  
ENGINEERING  
FAIR

Google  
Science  
Fair

**H**

THE HARVARD - IIT MATHEMATICS TOURNAMENT

**ORACLE** ThinkQuest  
EDUCATION FOUNDATION

## MENTAL ABILITY

1. If in a code language PARENT is written as BDFGJK and CHILDREN is written as MOXQUFGJ, how is REPRINT written in that language?  
(1) FGBFXGD (2) BGBFXJK  
(3) FGBFXJK (4) None of these
2. If Ahmed travels towards North from his house, then to left, then to South covering equal distances in each direction to reach Sohan's house, in which direction is Ahmed's house now?  
(1) East (2) South  
(3) North (4) None of these
3. There are 17 girls in a row. The position of the girl

at the middle is 9<sup>th</sup> from the beginning. What will be the position of the girl at the middle from the end?

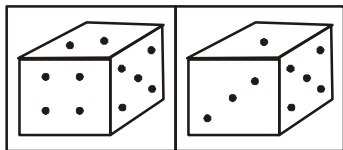
- (1) 7<sup>th</sup> (2) 9<sup>th</sup>  
(3) 8<sup>th</sup> (4) None of these
4. A clock with only dot marking 3,6,9 and 12 positions has been kept upside down in front of a mirror. A person reads the time in the reflection of the clock as 12.30. The actual time will be  
(1) 12 O'clock (2) 12.30 O'clock  
(3) 6 O'clock (4) None of these
  5. What will come in the place of (?)  
789,645,545,481,?,429,425  
(1) 439 (2) 445  
(3) 471 (4) None of these

6. If Noida is written as 39658, how is India written?  
 (1) 36568 (2) 65368  
 (3) 63568 (4) None of these

7. In the series given below count the number of 9s, each of which is not immediately preceded by 5 but is immediately followed by either 2 or 3. How many such 9s are there?  
 19265938393259293482698  
 (1) 1 (2) 5  
 (3) 3 (4) None of these

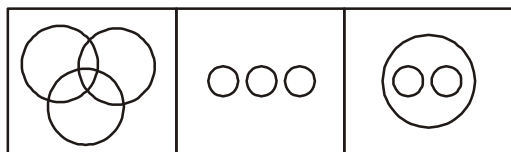
8. What will come in the place of (?)  
 ABCD:WXYZ::EFGH:?  
 (1) STUV (2) ZYXW  
 (3) VUTS (4) None of these

9. Study the two different positions of a cube given below with dots from 1 to 6 marked on its faces. Find out how many dots are contained on the face opposite to that containing 4 dots?



- (1) 1 (2) 2  
 (3) 3 (4) None of these

10. Which of the following represents men, rodents and living beings?



- (1) 1 (2) 3  
 (3) 2 (4) None of these

## COMPUTERS

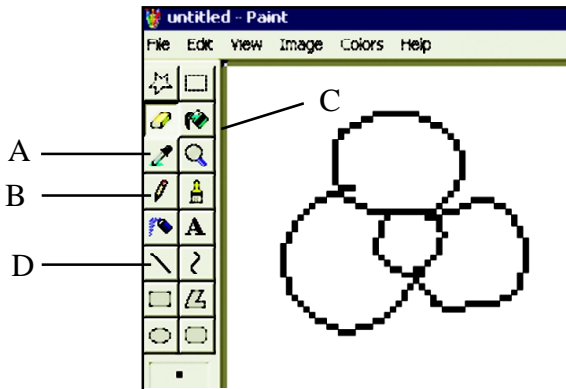
11. What is computer science?  
 (1) Learning about algorithms, programs  
 (2) Designing circuits for computers  
 (3) Designing web pages  
 (4) None of these
12. To open the File menu using the keyboard you would press the key(s) \_\_\_\_\_.  
 (1) CTRL + F (2) SHIFT + F  
 (3) ALT + F (4) None of these
13. In latest generation computers, the instructions are executed:  
 (1) Parallely only (2) Sequentially only  
 (3) Both (1) and (2) (4) None of these
14. Which of the following is not true of a magnetic disk?  
 (1) It is expensive relative to magnetic tape  
 (2) It provides only sequential access to stored data  
 (3) Users can easily update records by writing over the old data  
 (4) None of these
15. What is required when more than one person uses a central computer at the same time?  
 (1) Light pen (2) Terminal  
 (3) Digitizer (4) None of these
16. A set of programs designed to operate control and execute an application program is called?  
 (1) System software (2) Application software  
 (3) Peripheral (4) None of above
17. LAN, MAN, WAN, are three major kinds of Networks. What does WAN stand for?  
 (1) Wide Area Network  
 (2) World Architect News  
 (3) World Area Network  
 (4) None of these

18. 1 Gigabyte = ?

- (1) 1000 MB (2) 1024 MB  
 (3) 1024 KB (4) 1000 KB

Use the following information to answer questions 19 to 21.

Ahmed Ali is making flower in paint and saved his document giving name “flower”.



19. He draws flower in the document. Which one of the following is used to draw it?

- (1) A (2) B  
 (3) D (4) None of these

20. He wants to fill colour in the flower. Which icon he should use?

- (1) A (2) B  
 (3) C (4) None of these

21. He wants to take print out of the above document? In which menu he should go?

- (1) File (2) Edit  
 (3) View (4) Image

22. The equipments attached to CPU to which a computer can have access are called

- (1) Hardware (2) Input /Output devices  
 (3) Peripherals (4) Computer components

23. Which of the following is used in First Generation computer?

- (1) Transistors (2) Valves  
 (3) Microprocessors (4) Integrated circuit

24. Which one of the following is an input device?



(4) None of these

Use the following information to answer questions 25 to 29:

Rahul is making his mark sheet in MS Excel .

Subject	Paper I	Paper II	Paper III	Total
English	69	54	76	199
Hindi	56	76	74	206
Maths	70	65	67	202
Science	80	71	70	221
S.ST	65	72	74	211
Computer Science	97	67	85	249
			Total	

25. He wants to show the sum of selected cells in Cell F17. Which one of the following he would choose?

- (1) A (2) B  
 (3) D (4) None of these

26. The formula bar shows the cell number

- (1) F11 (2) F10  
 (3) F17 (4) None of these

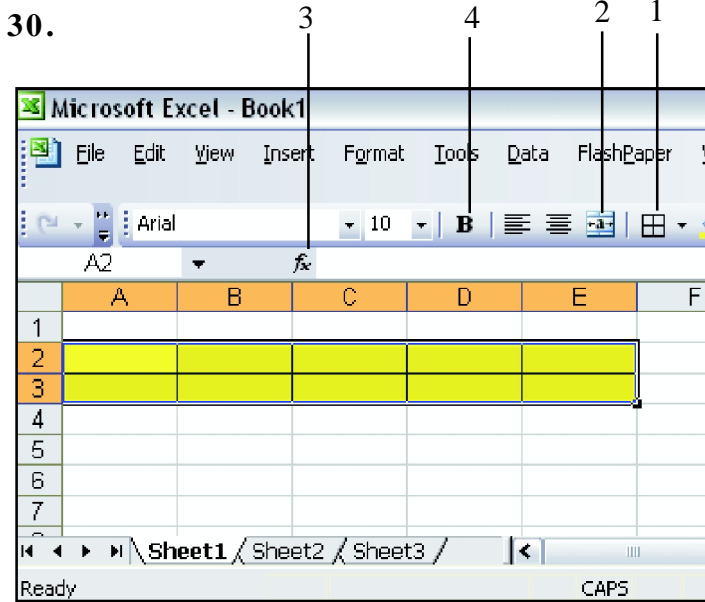
27. He wants to sort his mark sheet in ascending order. Which icon he should choose?

- (1) (2)   
 (3) (4) None of these

28. He wants to sum all subjects' marks of Paper I. What formula he should put in cell C17?

- (1) =Sum(C11:C16) (2) =Sum(C10:C17)  
 (3) =Sum(C12+C17) (4) None of these

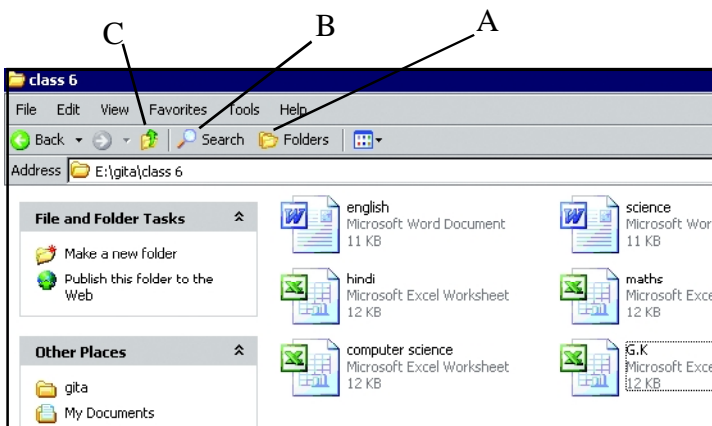
29. If you want to delete the line “Statement of Marks of 1<sup>st</sup> Terminal Examination”. Which cell would you select to operate delete command (The cells are not merged)?
- (1) C8 (2) D8  
 (3) B8 (4) None of these



- Nishtha wants to merge the highlighted cells. Which icon she should press to get the desired result?
- (1) 1 (2) 2  
 (3) 3 (4) 4

Use the following information to answer questions 31 to 33:

Harish is working in class 6 folder. There are many files in class 6 folder.



31. What is the path to reach class 6 folder?  
 (1) E:\gita \Class 6 (2) E:\class 6  
 (3) Both (1) and (2) (4) None of these
32. How many excel files are there in Class 6 folder?  
 (1) 2 (2) 6  
 (3) 4 (4) None of these
33. He wants to make a new folder in class 6 folder. Which of the following he should choose?  
 (1) A (2) B  
 (3) C (4) None of these
34. Electronic mail is the  
 (1) Transmission of letters, messages and memos over a communications network  
 (2) Distribution of all information.  
 (3) Both (1) and (2)  
 (4) None of the above
35. In MS Word default TAB alignment is:  
 (1) Left (2) Right  
 (3) Centre (4) None of these
36. To open an existing document in Word you would:  
 (1) Press CTRL + O  
 (2) Choose File then Open  
 (3) Click on the file folder icon on the Standard toolbar  
 (4) All of these

37. To show the paragraph marks on the page you would click the button \_\_\_\_\_



38. Which of the following statement is false?  
 (1) Timeline helps to organise and control the movie over time.  
 (2) The artwork is done on the spreadsheet in Flash.

- (3) 'Convert to symbol' option is available in insert menu.  
 (4) None of these

40. To see Help for Windows itself you would \_\_\_\_\_.  
 (1) click on the Help menu in the menu bar  
 (2) click on the Taskbar  
 (3) click on the Start menu and then on Help or Help and Support  
 (4) None of these

39. What is DNS?

- (1) Dominant Name System  
 (2) Domain Name System  
 (3) Distance Node Socket  
 (4) None of these

### INTERACTIVE SECTION

41. Select a folder. Hold the SHIFT key down while pressing the DELETE key. This will

- (1) Delete the file and send it to recycle Bin      (2) Delete the folder permanently  
 (3) Corrupt the folder      (4) None of these

42. You can display the Find and Replace dialogue box by using the:

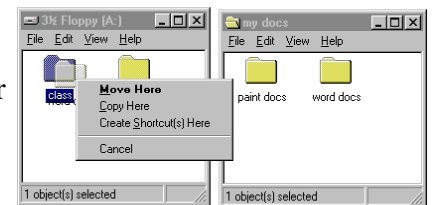
- (1) CTRL + G keys      (2) F5 key  
 (3) Find or Replace commands      (4) None of these

43. You can display the next page in Print Preview by :

- (1) clicking the page forward button      (2) clicking the previous page button  
 (3) clicking the next page button      (4) None of these

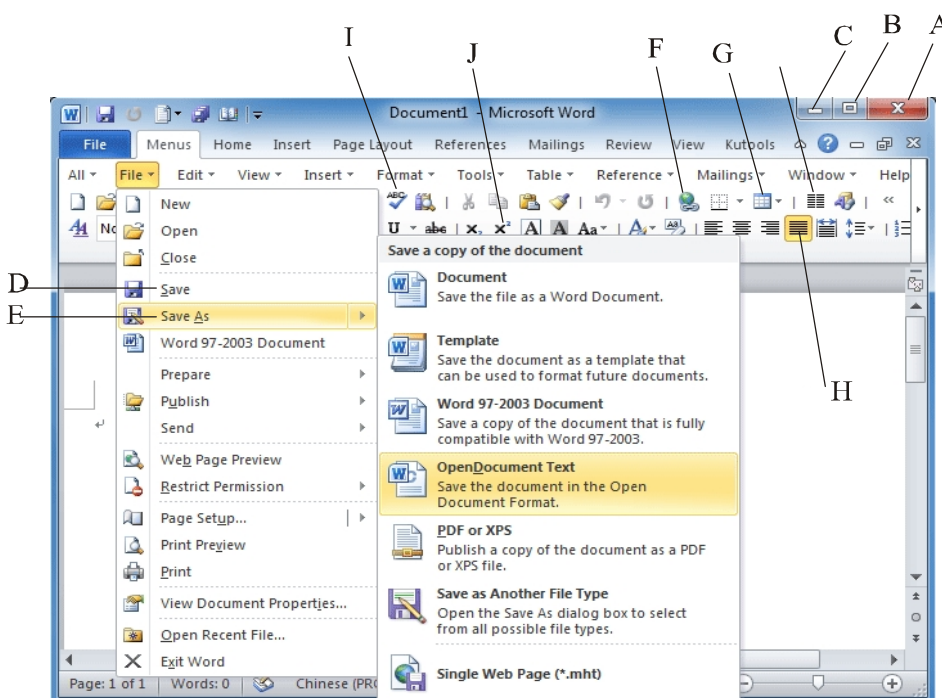
44. The menu appeared in the following figure appears when you

- (1) Right click on the folder      (2) Left click on the folder  
 (3) When you use edit drop down menu      (4) None of these



Use the following information to answer questions 45 to 49:

Ramesh is working in MS Word.



45. Which one of the following is used to minimize the above window?

- (1) A      (2) B      (3) C      (4) D

46. By which you can save your document?

- (1) D      (2) E  
(3) Both D and E      (4) None of these

47. For text justifying on which option you will click?

- (1) G      (2) B  
(3) H      (4) None of these

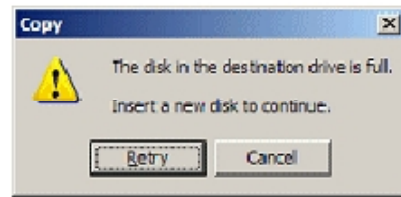
48. Which of the following is Hyperlink icon?

- (1) F      (2) G  
(3) H      (4) None of these

49. The "T" indicates:

- (1) Spelling checker      (2) Scroll bar  
(3) Toolbar      (4) None of these

50. While copying a file if you see a dialog box as shown at the right, what you need to do?



- (1) Leave the message open while you delete or move files/folders on the destination disk to make more space. Then click the Retry or Try Again button.  
(2) Choose Cancel and find a different location for your copy/move.  
(3) Choose Cancel and select a smaller set of files and then try again  
(4) All of these



**END OF THE EXAM**