



# EHF

LEARNING FOR LIFE

## EDUHEAL FOUNDATION

# CLASS 3

## LEVEL - 1

## Set A1

### EHF OLYMPIADS

- 4000 schools • 6 lakh students
- 10 olympiads • Global outreach



### EHF

## INTERNATIONAL CYBER OLYMPIAD

Name : .....

Roll No : .....

Class : .....

School : .....



**NATIONAL  
BIOTECHNOLOGY  
OLYMPIAD**



**NATIONAL  
MATHS  
OLYMPIAD**



**NATIONAL  
SCIENCE  
OLYMPIAD**



**INTERNATIONAL  
CYBER  
OLYMPIAD**



**INTERNATIONAL  
ENGLISH  
OLYMPIAD**



**INTERNATIONAL  
GENERAL KNOWLEDGE  
OLYMPIAD**



**BSE international finance olympiad (BIFO)**



**NATIONAL IIT-PMT OLYMPIAD (NIPO)**

**Level - 1 :** All Level-1 successful\* participants will get certificate, aptitude report and online subscription, and school toppers will be eligible for school hero medals.

**Level - 2 :** School toppers\* will be selected for level-2-National level - online computer based interactive test held at exam centres all over India. Besides selection for level-3, winner will get merit certificate, medals, educational CDs, laptop, scholarship and other prizes. There is no level-2 in Art and Cricket.

**Level - 3 :** Toppers will qualify\* for level-3-International level-where you will compete with students globally. Get selected for EHF's International Olympiad training camp. Only Indian organization giving students exposure to global competitions. Represent India & win laurels. Guidance by top scientists. Prizes ranges from cash (millions of \$), gadgets, foreign trips, publicity, fame, scholarships, Internships, conference participation and more.

\* # See prospectus website for details

#### Instructions for the Candidate

1. You are allowed additional 10 minutes to fill the required details in the RESPONSE SHEET (OMR).
2. The question paper is made as per syllabus guidelines & pattern given in the information Booklet. The Question Paper for Classes 1 to 6 contains 25 Questions each to be answered in 40 minutes. The Question paper for classes 7 to 12 contains 50 Questions each to be answered in 60 minutes. All questions are compulsory. Further instructions are given in the instruction letter to the teacher.
3. Use the response sheet to mark your responses by darkening the required circle. The response sheet has to be returned to the foundation, duly filled in. THE STUDENT CAN RETAIN THE QUESTION PAPER.

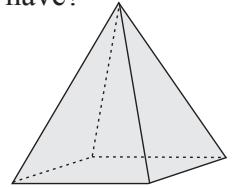
WEBSITE : [WWW.EDUHEALFOUNDATION.ORG](http://WWW.EDUHEALFOUNDATION.ORG)  
E-MAIL : [INFO@EDUHEALFOUNDATION.ORG](mailto:INFO@EDUHEALFOUNDATION.ORG)

# ROUGH WORK

# MENTAL ABILITY

- Which of these number sentences is correct?  
 (1)  $456 > 465$                       (2)  $476 > 467$   
 (3)  $403 > 430$                       (4) None of these
- Mrs. Geeta writes the following number sentence on the board:  
 $600 \times \square = 0$   
 Which number would go into the box?  
 (1) 0    (2) 1  
 (3) 2    (4) None of these
- Which number comes next in the series?  
 4231, 4331, 4431, ?

- (1) 4432    (2) 4430  
 (3) 4531    (4) None of these
- How many faces does this figure have?  
 (1) 5  
 (2) 6  
 (3) 7  
 (4) None of these
- Which is a better estimate for the length of a bed sheet?  
 (1) 2 metres    (2) 2 centimetres  
 (3) Both (1) and (2)    (4) None of these



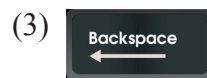
# COMPUTERS

- Which of the following groups consist of only output devices?  
 (1) Keyboard, Printer, Monitor  
 (2) Mouse, Printer, Monitor  
 (3) Plotter, Printer, Monitor  
 (4) None of these
- Which function key is used to check spellings?  
 (1) F2    (2) F5  
 (3) F7    (4) None of these
- Who invented keyboard?  
 (1) Steve Jobs  
 (2) Martin Cooper  
 (3) Christopher Latham Sholes  
 (4) None of these
- Which do you use to connect to the internet?  
 (1) Phone Line    (2) Mouse  
 (3) Motherboard    (4) None of these
- Which of the following is not essential to shut down your computer?  
 (1) Save all opened files  
 (2) Close all running applications  
 (3) Switch off monitor  
 (4) None of these
- A \_\_\_\_\_ is an example of an input device.  
 (1) keyboard    (2) monitor

- (3) central processing unit (4) none of these
12. A computer helps in diagnosis of diseases in



- (1) (2)   
 (3) (4) None of these
13. \_\_\_\_\_ key is used to type capital letters.



- (2) None of these

14. Which is an input device?



- (1) Both (1) and (2)    (2) None of these

15. A toolbox used to draw thin, free form lines or curves.

- (1) Brush
- (2) Pencil
- (3) Airbrush
- (4) None of these

16. What is the function of this tool in MS-Paint?



- (1) Selects an area of an image in a rectangular shape.
- (2) Selects a free form (irregular-sized) object.
- (3) Draws a polygon or several-sided object in an image.
- (4) None of these

17. MS-Paint is a program which is used for a

- (1) Presentations
- (2) Calculations
- (3) Drawing
- (4) None of these


18. The first computers were programmed using

- (1) assembly language
- (2) machine language
- (3) source code
- (4) none of these

19. Which part of the computer is used for calculating and comparing?

- (1) Disk unit
- (2) Control unit
- (3) ALU
- (4) None of these

20. Which of the following fill an area with color?

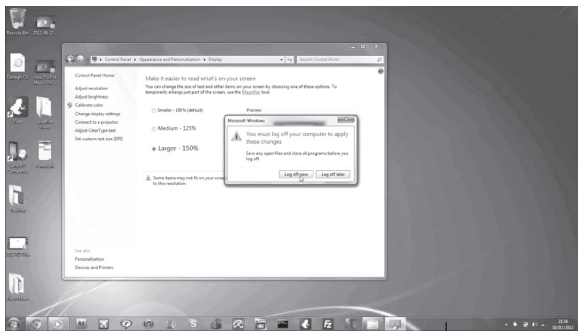
- (1) 
- (2) 
- (3) 
- (4) None of these

## INTERACTIVE SECTION

21. Arrange the steps to open paint program:



- (A) Click on all Programs
  - (B) Click on Accessories
  - (C) Click on Paint
  - (D) Click on Start button
- (1) A, B, C, D
  - (2) D, A, B, C
  - (3) D, B, A, C
  - (4) None of these

22. Identify the part 'A' of the Desktop given below:



- (1) View tab
- (2) Taskbar
- (3) Start menu
- (4) None of these

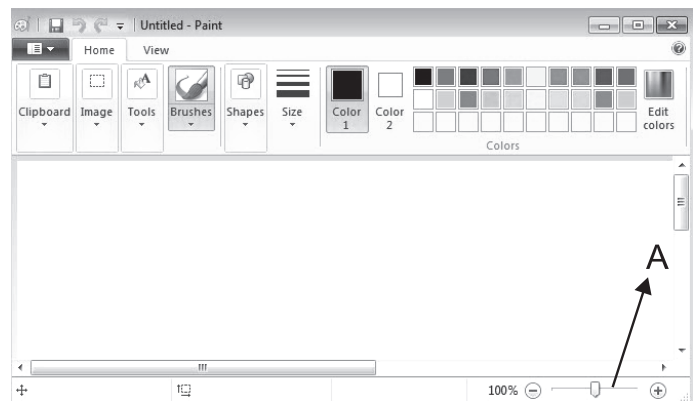
23. The tool which allows us to draw a curve in MS-Paint is

- (1) 
- (2) 



- (3) 
- (4) None of these

24. Identify the part 'A' of the MS-Paint window given below:



- (1) Select tool
- (2) Zoom slider
- (3) View tab
- (4) None of these

25. The size of commonly used floppy disk is

- (1) 4.5"
- (2) 3.5"
- (3) 3.25"
- (4) None of these



**END OF THE EXAM**