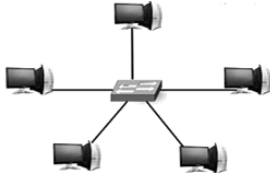
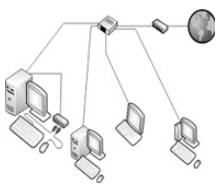


20. Three or more devices share a link in _____ connection.

(1)



(2)



(3) both (1) and (2)

(4) none of the mentioned

21. In the layer hierarchy as the data packet moves from the upper to the lower layers, headers are

(1) added

(2) removed

(3) rearranged

(4) modified

22. If you enclose a graphic with your email you need to make sure that:

(1) Your recipient has a colour printer.

(2) You have enough memory in your computer to send it.

(3) Your recipient is close by in order to avoid data corruption.

(4) Your recipient's client email software can display graphics.

23. Which software below is an e-mail client?

(1)



(2)



(3)



(4)



24. To check to see if the web server you are trying to reach is available or is down, which command line utility should you use?

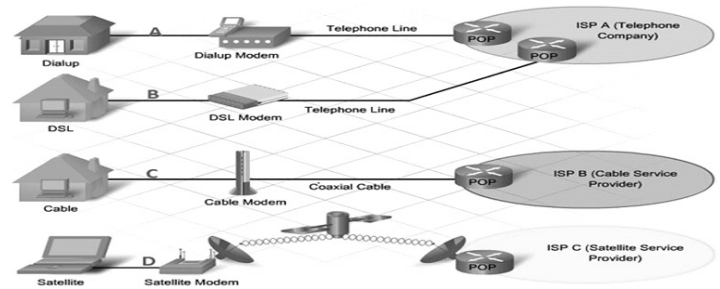
(1) PING

(2) ICS

(3) Telnet

(4) NNTP

25. Which of the following Internet connection methods enables you to watch television on your computer if you have a TV tuner card?



(1) A

(2) B

(3) C

(4) D

26. If your modem cannot connect to the Internet, which of the following can you eliminate as a cause of the problem?

(1) The phone line is dead.

(2) All lines on the Internet are busy.

(3) You dialed the wrong number.

(4) None of these

27. Which of these is correct?

(1) Http://www.

(2) Http://www.

(3) Http:\\www.

(4) None of these

28. A web cookie is a small piece of data

(1) sent from a website and stored in user's web browser while a user is browsing a website.

(2) sent from user and stored in the server while a user is browsing a website

(3) sent from root server to all servers

(4) none of these

29. World Wide Web (WWW), was originally designed as a

(1) Stateless document

(2) Stateless program

(3) Stateless entity

(4) Stateless IP address

30. What do search engines do?

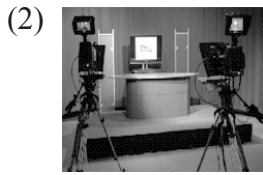
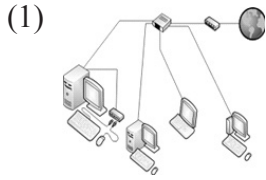
(1) allow you to view information.

(2) show you information by category.

(3) run a search for you while you wait.

(4) run a search for you and write your paper while you wait.

31. There is a huge system of interconnected networks on the internet. What are networks?



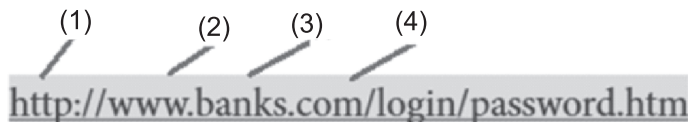
(4) None of these

32. Gaurav said: Internet is interconnection of computer networks.

Rohan said: Internet is a collection of digital pages to access information.

- (1) Gaurav is right (2) Rohan is right
 (3) Both are right (4) None of these

33. From given figure, what does 3 indicate?



- (1) Protocol
 (2) Host computer name
 (3) Domain type
 (4) Domain name

34. If gaurav wants to include the image file hardware.gif stored in the images directory of www.developers.com domain on this page absolute URL is

- (1) ``
 (2) ``
 (3) ``
 (4) All of above

35. AOL, iGoogle, Yahoo are examples of _____.

- (1) Web Site
 (2) Web Page
 (3) Web Portal
 (4) None of these

36. Web search engines works with the help of two programs.

Which are they?

- (1) Web crawler and cascading style sheet.
 (2) Spider and indexer.
 (3) Web server and web crawler.
 (4) None of these

37. Gaurav has a hobby of writing articles and short write ups. He wants to share his views with the world. Suggest what he should do to make his views public and share his thoughts with everyone.

- (1)  (2) 
 (3)  (4) 

38. In 1990s, the internetworking of which three networks resulted into Internet?

- (1) WWW, GPS and other private networks
 (2) ARPANET, NSFnet and other private networks
 (3) ARPANET, NSFnet and other public networks
 (4) ARPANET, GPS and NSFnet

39. Name software used to create website.

- (1) FireBug
 (2) GIMP
 (3) Notepad++
 (4) All of above

40. Who was the father of Internet?

- (1) Charles Babbage
 (2) Vint Cerf
 (3) Denis Riche
 (4) Martin Cooper

INTERACTIVE SECTION

41. Which is the best search tool for finding web sites that have been handpicked and recommended by someone else?
- (1) Subject directories
 - (2) Search engines
 - (3) Meta search engines
 - (4) Discussion groups
42. A URL can specify IP address of web _____ that houses a web page.
- (1) server
 - (2) client
 - (3) page
 - (4) email
43. All of the following are domain except
- (1) coop
 - (2) net
 - (3) biz
 - (4) bus
44. The advantages of XML over HTML are
- (i) It allows processing of data stored in web pages.
 - (ii) It uses meaningful tags which aids in understanding the nature of a document.
 - (iii) It is simpler than HTML.
 - (iv) It separates presentation and structure of document.
- (1) (i), (ii) and (iii)
 - (2) (i), (ii) and (iv)
 - (3) (ii), (iii) and (iv)
 - (4) (i), (iii) and (iv)
45. The tags used for specifying fonts in HTML are
- | | |
|-----------|----------|
| (i) | (ii) <I> |
| (iii) <U> | (iv) <L> |
- (1) (i) and (ii)
 - (2) (i) and (iii)
 - (3) (ii) and (iv)
 - (4) (i), (ii) and (iii)
46. Desirable properties of a website are
- (i) a meaningful address.
 - (ii) Help and search facilities.
 - (iii) Links to related sites.
 - (iv) Features to allow users to give feedback.
 - (v) Hosting on a mainframe.
- (1) (i), (ii), (iii)
 - (2) (i), (ii), (iii), (iv)
 - (3) (i), (ii), (iii), (iv), (v)
 - (4) (i), (ii), (iii), (v)
47. Among services available on the World Wide Web are
- | | |
|----------------|----------------|
| (i) Encryption | (ii) HTTP |
| (iii) HTML | (iv) Firewalls |
- (1) (i) and (ii)
 - (2) (ii) and (iii)
 - (3) (iii) and (iv)
 - (4) (i) and (iv)
48. Which of the following is not a scripting language?
- (1) .HTML
 - (2) .XML
 - (3) .Postscript
 - (4) .JavaScript
49. A digital signature is
- (1) scanned signature
 - (2) signature in binary form
 - (3) encrypting information
 - (4) public key encryption
50. Secret key encryption is also known as
- (1) Asymmetric encryption
 - (2) Symmetric encryption
 - (3) Secret encryption
 - (4) Private encryption

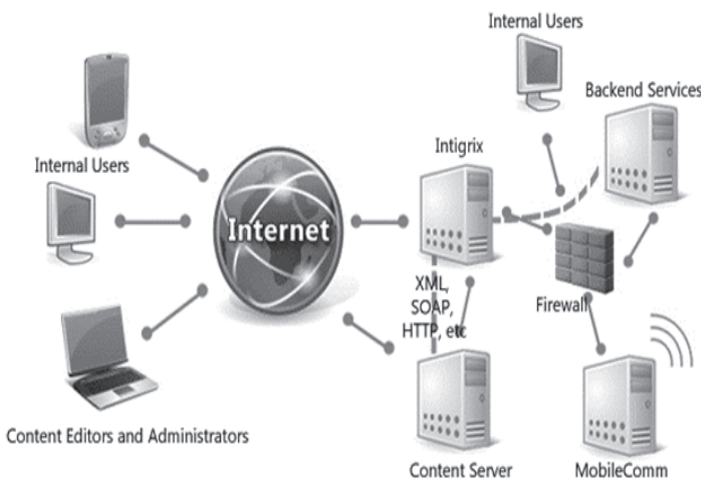
51. Ctrl+L short cut key is used for
- (1) Decrease the size of text.
 - (2) Move the cursor into the address bar.
 - (3) Go back a page.
 - (4) Reload a web page.

52. W3C stands for



- (1) World Wide Web Copyright
- (2) World Wide Web Consortium
- (3) World Wide Web Content
- (4) World Wide Web connection

53. What is intranet?



- (1) Private network.
- (2) Collection of different networks.
- (3) Wide area network.
- (4) None of these

54. IPv6 addressed have a size of

- (1) 32 bits
- (2) 64 bits
- (3) 128 bits
- (4) 265 bits

55. Which one of the following is not used in media access control?

- (1) Ethernet
- (2) Digital subscriber line
- (3) Fiber distributed data interface
- (4) None of these

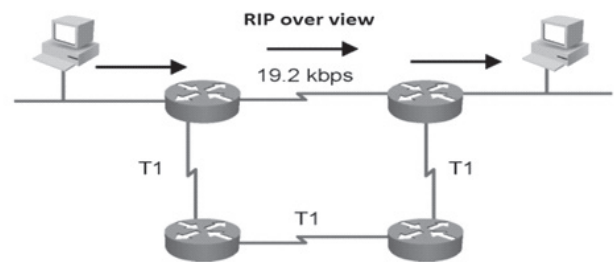
56. A program that sends email messages _____

- (1) Messenger
- (2) Transfer protocol
- (3) Mail exchanger
- (4) Mailer

57. What is data encapsulation?

- (1) Convert information into digital format.
- (2) Breaking down information into smaller manageable chunks.
- (3) Compress information.
- (4) Merge information with sending packets.

58. RIP is used by _____ to send data from one network to another.

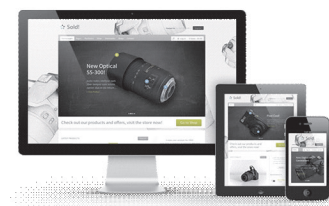


- (1) COMPUTERS
- (2) ROUTERS
- (3) VPN
- (4) FTP

59. WebGL new elements in HTML5 for

- (1) Image
- (2) Pixel
- (3) Cookies
- (4) CSS

60. This HTML website is an example of _____ website.



- (1) Semantics type
- (2) Migration type
- (3) Responsive type
- (4) None of these



END OF THE EXAM