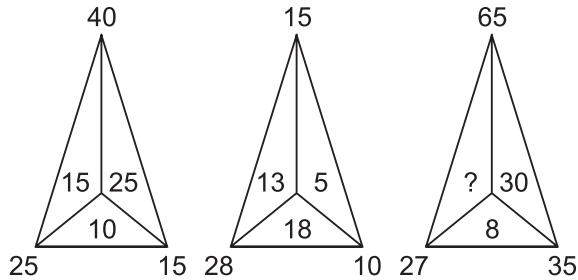


MENTAL ABILITY

1. Find the missing term:

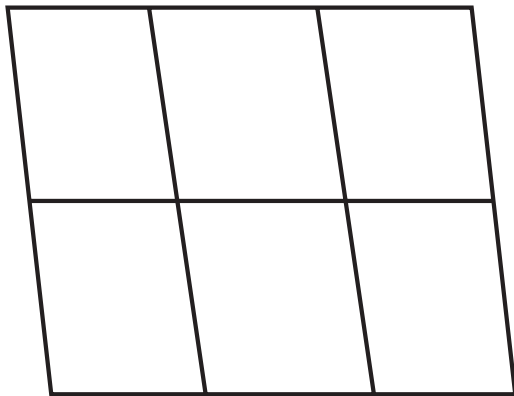


- (1) 20
- (2) 25
- (3) 30
- (4) 38

2. In a certain code, MADRAS is coded as NBESBT. How BOMBAY coded in that code?

- (1) CPNCBX
- (2) CPNCBZ
- (3) CPOCBZ
- (4) CQOCBZ

3. How many parallelograms are there in the figure given below?



- (1) 15
- (2) 16
- (3) 18
- (4) 17

4. Find which one word cannot be made from the letters of the given word.

UNCOMMANDED

- (1) MACRON
 - (2) AMEND
 - (3) DEAD
 - (4) COMMAND
5. Three of them are alike and form a group, while one of them is different. Find the odd-one-out as directed.

- (1) Triangle
- (2) Square
- (3) Circle
- (4) Rectangle

6. Arrange the words in the sequence in which they occur in dictionary. Find out the correct alternative.

- (A) Virtuous
 - (B) Virulence
 - (C) Viscous
 - (D) Visionary
- (1) (A), (B), (C), (D)
 - (2) (B), (A), (C), (D)
 - (3) (C), (D), (A), (B)
 - (4) (D), (A), (B), (C)

7. What is the value of $2 - [3 - \{4 - (2 - 3)\}]$?

- (1) 4
- (2) 13
- (3) 19
- (4) 6

8. Find the missing term:

29, 34, 32, 37, 35, 40, ?

- (1) 24
- (2) 27
- (3) 36
- (4) 38

9. If A and B are two sons of a farmer C. C has a daughter D. How is D related to A?

- (1) Sister

(2) Daughter

(3) Sister-in-law

(4) Daughter-in-law

10. Which letter comes half way between G and S in the alphabet?

(1) M

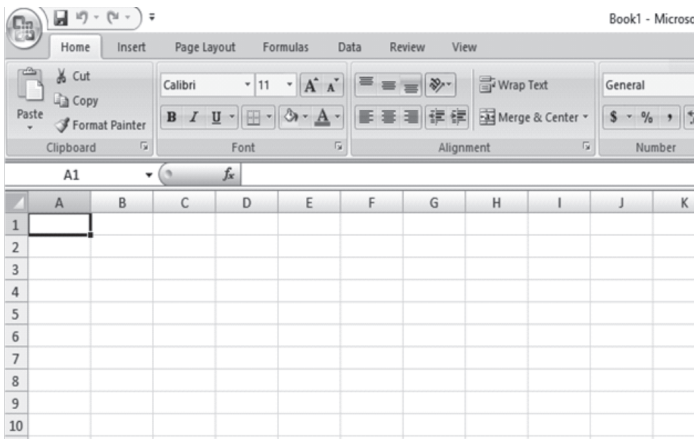
(2) N

(3) O

(4) P

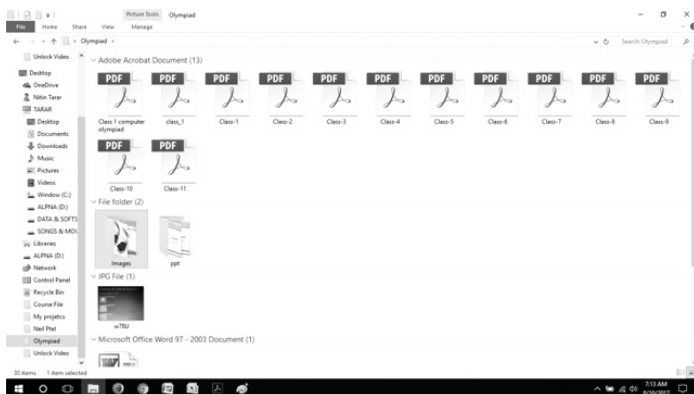
COMPUTERS

11. Where a row and a column meet, what do you call that?



- (1) A cell
- (2) A block
- (3) A box
- (4) None of the above

12. CTRL + Shift + N would create a _____ in window.



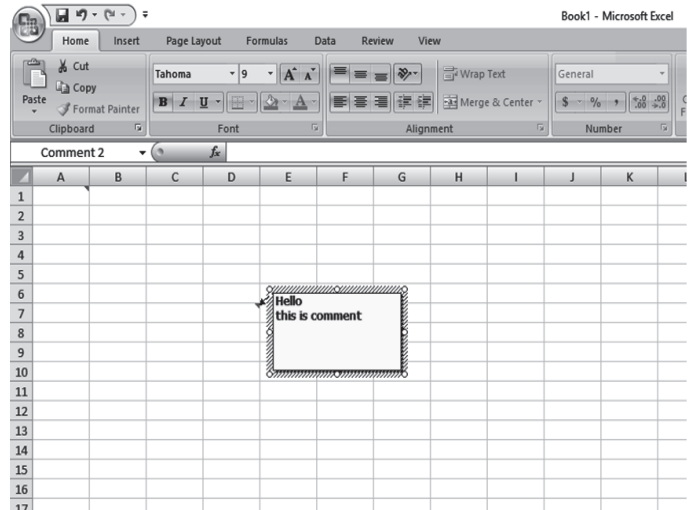
- (1) new file

(2) new folder

(3) new window

(4) new tab

13. Comments put in cells are called _____ .



- (1) smart tip
- (2) cell tip
- (3) web tip
- (4) soft tip

14. What symbol is used before a number to make it a label?

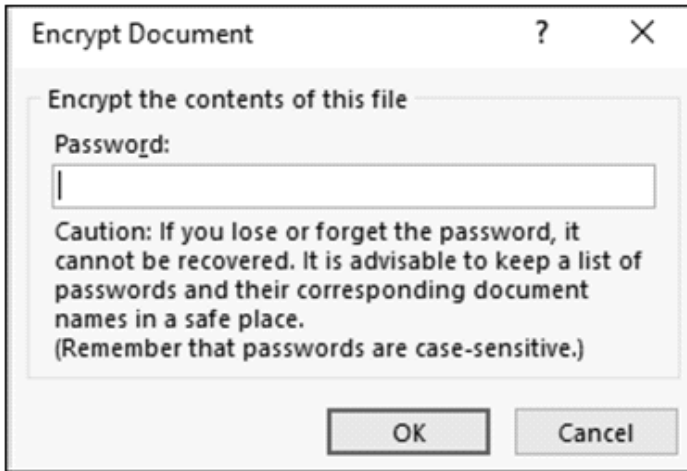
(1) " (quote)

(2) = (equal)

(3) _ (underscore)

(4) ' (apostrophe)

15. How to encrypted a excel file?

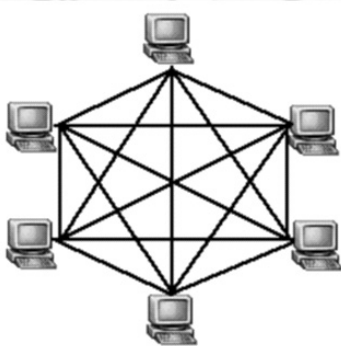


- (1) Click office icon > prepare > encrypt document > encrypt with password > ok
- (2) Click office icon encrypt document > encrypt with password >> prepare > ok
- (3) Click office icon > encrypt document > prepare > encrypt with password > ok
- (4) None of these

16. What is starvation?

- (1) Resource management problem.
- (2) Data management problem.
- (3) Time management problem.
- (4) Space management problem.

17. A network in which there are multiple network links between computers to provide multiple paths for data to travel called



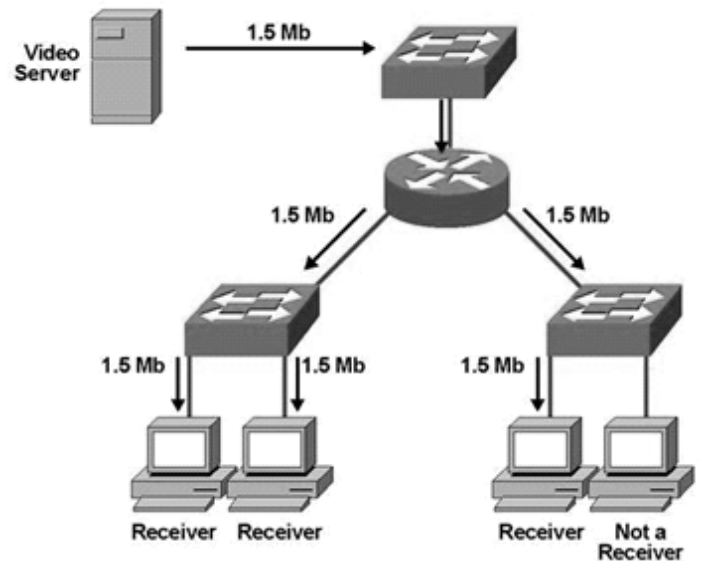
- (1) mesh
- (2) ring
- (3) star
- (4) hybrid

18. Which of the following is a technique to blend two or more images to form a new image?



- (1) Modeling
- (2) Morphing
- (3) Animating
- (4) Warping

19. Sending a message to a group is called



- (1) multi tasking
- (2) multi routing
- (3) multicasting
- (4) none of above

20. Which environment is experienced by users as similar to reality?

- (1) AVR
- (2) Artificial Intelligence
- (3) Virtual Reality
- (4) None of above

21. Which of the following device used 'set of beads' to represent the unit of data?

- (1) ENIAC
- (2) EDVAC
- (3) Abacus
- (4) MARK-1





22. Which of the following is the maximum bandwidth supported by any channel?

- (1) 1 MB
- (2) 1 GB
- (3) 100 MB
- (4) 100 GB

23. is the expansion of COBOL.

- (1) Common Business Oriented Language
- (2) Common Business Objected Language
- (3) Coded Business Oriented Language
- (4) Coded Business Objected Language

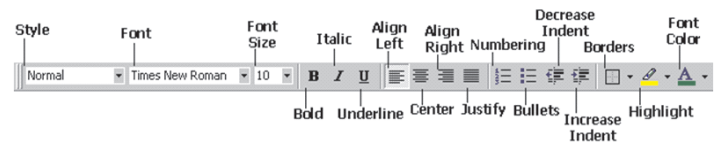
24. Which is not the search engine?

- (1) 
- (2) 
- (3) 
- (4) 

25. Combination of four bits is called _____.

- (1) byte
- (2) nibble
- (3) peta byte
- (4) kilo byte

26. Following toolbar represents



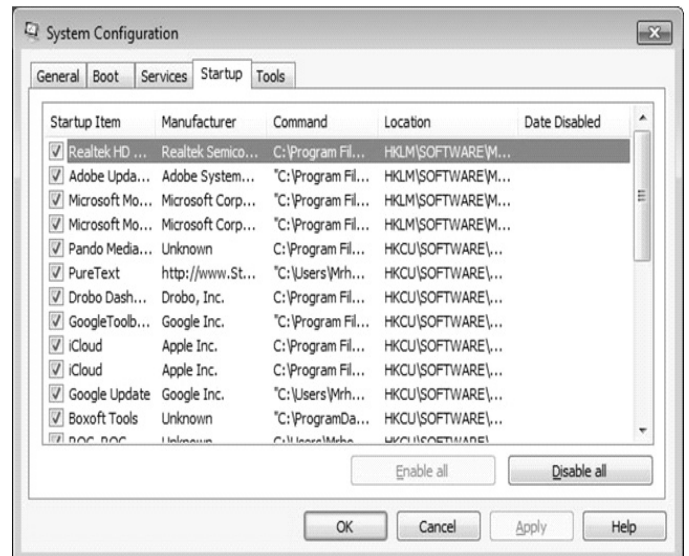
- (1) Formatting toolbar
- (2) Standard tool bar
- (3) Menu bar
- (4) Quick access bar

27. HTTPS stands for



- (1) Hyper Text Transfer Protocol Safe
- (2) Hyper Text Transfer Protocol Source
- (3) Hyper Text Transfer Protocol Secure
- (4) Hyper Text Transfer Protocol Security

28. To configuration start up we run utility.



- (1) control panel
- (2) MSconfig
- (3) window config
- (4) system tools

29. What is the purpose to run chkdsk command?

```
Administrator: Command Prompt
Microsoft Windows [Version 10.0.14393]
(c) 2016 Microsoft Corporation. All rights reserved.

C:\Windows\system32>chkdsk
The type of the file system is NTFS.

WARNING! /F parameter not specified.
Running CHKDSK in read-only mode.

Stage 1: Examining basic file system structure ...

165632 file records processed.
```

- (1) To check the entire disk surface for bad sectors & repair.

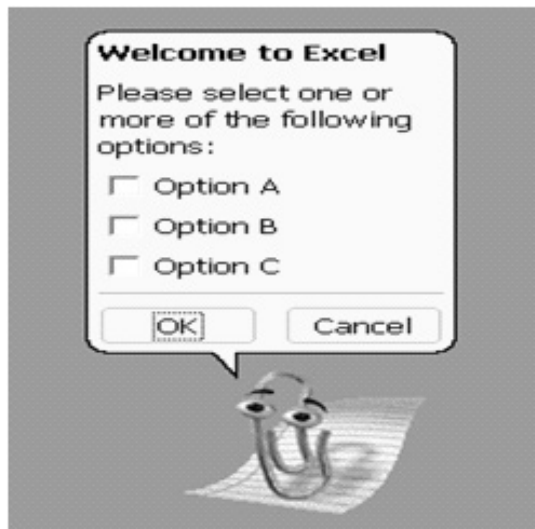
- (2) For partition of the hard disk.
- (3) Defragment of hard disk.
- (4) None of these

30. Which of the following help you manage folders and files stored in various location?

- (1) Library
- (2) Gadget
- (3) Recycle bin
- (4) Password

INTERACTIVE SECTION

31. This famous picture represents



- (1) MS office assistance
- (2) windows support center
- (3) windows assistance
- (4) MS office correction tool

32. Special effects used to introduce slides are known as

- (1) transitions
- (2) effects
- (3) custom animations
- (4) annotations

33. Identify which is not measure of memory or storage capacity unit.

- (1) Exabyte
- (2) Zettabyte
- (3) Brontobyte
- (4) Octobyte

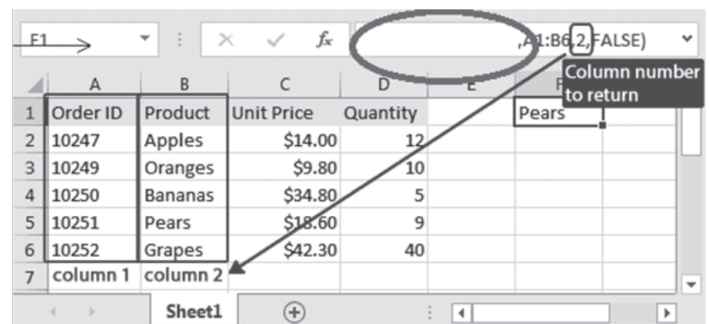


34. Text editing and creativity makes easy by using

Computer Science

- (1) clip art
- (2) word art
- (3) smart art
- (4) none of above

35. Find a value you want in an excel list or table and finds its corresponding value on the same row in another column this function called



- (1) Ceiling
- (2) Vlookup
- (3) Hlookup
- (4) Match

36. What action allows you to open user account and makes the computer available?

- (1) Start menu
- (2) Password
- (3) User interface
- (4) Logging on

37. A global system of interconnected computer networks that use the protocol suite (TCP/IP) to link devices worldwide is called



- (1) Internet
- (2) Google
- (3) Server
- (4) None of above

38. Find out one out.

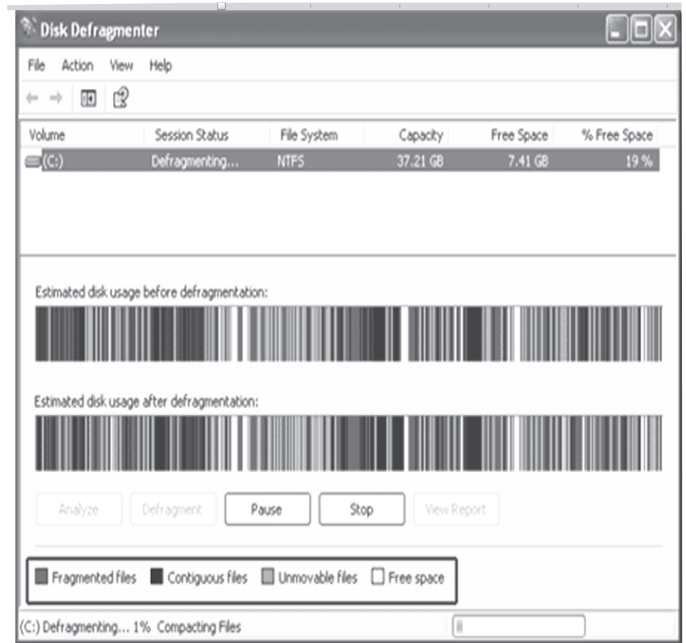
- (1) Multilink dial-up.
- (2) ISDN
- (3) WiMAX
- (4) None of above

39. A privacy feature in some web browsers to disable browsing history and the web cache.



- (1) incognito mode
- (2) safe mode
- (3) offline mode
- (4) none of above

40. Disk defragmentation process used for



- (1) Fill the space.
- (2) Arrange file as per their size in open space.
- (3) Rearranging files stored on a disk to occupy contiguous storage locations.
- (4) Shrink the space.



END OF THE EXAM