



# EDUHEAL FOUNDATION

EDUHEAL FOUNDATION CONDUCTS 8 OLYMPIADS ANNUALLY REACHING OUT TO 3,500 + SCHOOLS  
• 5 LAKH + STUDENTS • 50,000 TEACHERS AND HAVING 500 RESOURCE PERSONS  
IN ENGLISH / MATHS / SCIENCE / BIOTECH / COMPUTER / G.K. / ARTS / CRICKET / FINANCE & 300 REGIONAL COORDINATORS.

WEBSITE : [WWW.EDUHEALFOUNDATION.ORG](http://WWW.EDUHEALFOUNDATION.ORG) • E-MAIL : [INFO@EDUHEALFOUNDATION.ORG](mailto:INFO@EDUHEALFOUNDATION.ORG)

<b>ICO</b> INTERNATIONAL CYBER OLYMPIAD	<b>NISO</b> NATIONAL INTERACTIVE SCIENCE OLYMPIAD	<b>NIMO</b> NATIONAL INTERACTIVE MATHS OLYMPIAD	<b>NBTO</b> NATIONAL BIOTECHNOLOGY OLYMPIAD	<b>IEO</b> INTERNATIONAL ENGLISH OLYMPIAD	<b>IGO</b> INTERNATIONAL G.K. OLYMPIAD	<b>BIFO</b> BSE INTERNATIONAL FINANCE OLYMPIAD	<b>NIPO</b> NATIONAL IIT-PMT OLYMPIAD
---	---	---	---	---	--	--	---

**Level - 1** : All Level-1 successful\* participants will get certificate, aptitude report and online subscription, and school toppers will be eligible for school hero medals.

**Level - 2** : School toppers\* will be selected for level-2-National level - online computer based interactive test held at exam centres all over India. Besides selection for level-3, winner will get merit certificate, medals, educational CDs, laptop, scholarship and other prizes. There is no level 2 in Art, G.K. and Biotech.

**Level - 3** : Toppers will qualify# for level 3-International level-where you will compete with students globally. Get selected for EHF's International Olympiad training camp. Only Indian organization giving students exposure to global competitions. Represent India & win laurels. Guidance by top scientists. Prizes ranges from cash (millions of \$), gadgets, foreign trips, publicity, fame, scholarships, Internships, conference participation and more. Level 3 is in Maths, Science & Cyber only.

\*# See prospectus/website for details.

- You are allowed additional 10 minutes to fill the required details in the **RESPONSE SHEET (OMR)**. **STUDENTS OF CLASS 1 & 2 HAVE TO UNDERLINE** THE CORRECT ANSWER IN THE QUESTION PAPER ITSELF. THEY ARE NOT REQUIRED TO USE THE RESPONSE SHEET (OMR). THEY HAVE TO FILL THEIR NAME, ROLL NUMBER, CLASS, SCHOOL NAME IN THE SPACE PROVIDED IN THE QUESTION PAPER.
- The question paper is made as per syllabus guidelines & pattern given in the information Booklet. The Question Paper for Classes 1 to 6 contains 25 Questions each to be answered in 40 minutes. The Question paper for classes 7 to 12 contains 50 Questions each to be answered in 60 minutes. All questions are compulsory. Further instructions are given in the instruction letter to the teacher.
- Use the response sheet to mark your responses by darkening the required circle. The response sheet has to be returned to the foundation, duly filled in. **THE STUDENT CAN RETAIN THE QUESTION PAPER EXCEPT FOR CLASSES 1 AND 2.**

**EHF**  
INTERNATIONAL  
**G.K.**  
OLYMPIAD  
**IGO**

**3**  
Class

**A1**  
Paper  
Code

**L E V E L - 1**

Academic Partner — [WWW.EDUSYS.IN](http://WWW.EDUSYS.IN)

**EtG**  
BOOKS

Creating  
**SUCCESS**  
Stories

A UNIT OF EDUSYS LEARNING MEDIA  
AIEEE • IIT • PMT • OLYMPIADS

**intel**  
INTERNATIONAL  
SCIENCE  
AND  
ENGINEERING  
FAIR

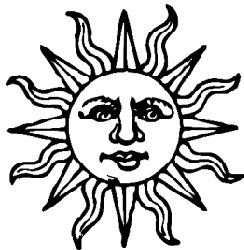
Google  
Science  
Fair

**H**  
THE HARVARD-NIT MATHEMATICS TOURNAMENT

**ORACLE** ThinkQuest  
EDUCATION FOUNDATION

## GENERAL KNOWLEDGE

1. What is the sun?



- The sun is another galaxy.
- The sun is a planet.
- The sun is a star.
- None of these

2. The given planet is:



- Earth
  - Neptune
  - Saturn
  - None of these
3. What is the playground of Golf called?
- Course
  - Field
  - Shore
  - None of these
4. Which place is known as "Roof of the World"?
- Pamir Knot
  - Kanchenjunga
  - Indira Point
  - None of these

5. Which of the following is not a good manner?  
(1) Covering mouth when you cough or sneeze.  
(2) Using other's things without permission.  
(3) Chewing with mouth closed.  
(4) None of these

6. Author of the book "Swamy and friends" is  
(1) Ramakrishna Paramhansa  
(2) Ruskin Bond  
(3) R K Narayan  
(4) None of these

7. DVD stands for :  
(1) Digital Versatile Disc  
(2) Digital Version Disc  
(3) Digital Video Disc  
(4) None of these

8. USB stands for :  
(1) Universal Serial Board  
(2) Unique Serial Bus  
(3) Universal Serial Bus  
(4) None of these

9. To cut something in a computer file, we use:  
(1) Ctrl + X                      (2) Ctrl + C  
(3) Ctrl + V                      (4) None of these

10. Which of the following applications will a teacher use to show a presentation on 'Importance of Plants' to students?  
(1) MS Word                      (2) MS Excel  
(3) MS Power Point              (4) None of these

11. A fist-sized muscular organ which is located in our rib cage:  
(1) Heart                              (2) Liver  
(3) Leg                                (4) None of these

12. Who won the Chinese Taipei Open in September 2008?  
(1) Sania Mirza  
(2) Saina Nehwal  
(3) Karanam Malleshwari  
(4) None of these

13. \_\_\_\_\_ was the first woman to join the Indian Police Services.  
(1) Kiran Shaw  
(2) Kiran Mazumdar  
(3) Kiran Bedi  
(4) None of these

14. The art of bee keeping is called \_\_\_\_\_.  
(1) Sericulture  
(2) Apiculture  
(3) Agriculture  
(4) None of these

15. "Chewing the cud" is associated with  
(1) Cows                              (2) Buffaloes  
(3) Both (1) & (2)              (4) None of these

16. I'm a green coloured dustbin. People throw paper and leftover food inside me. So, what am I used for?



- (1) Biodegradable Wastes  
(2) Non-biodegradable wastes  
(3) Both (1) & (2)  
(4) None of these

**INTERACTIVE SECTION**



17. What is the name of this famous personality printed on it?

- (1) Lal Bahadur Shastri      (2) Mahatma Gandhi
- (3) Jawaharlal Nehru      (4) None of these

18. What can be seen on the bottom left of the above image?

- (1) Ashoka Chakra(national emblem), replica of lion capital of Sarnath
- (2) Arjun Chakra(national emblem), replica of lion capital of Sarnath
- (3) Ashoka Chakra(national emblem), replica of tiger capital of Sarnath
- (4) None of these

19. Who wrote "The Ugly Duckling, The little Mermaid & The Thumbelina"?

- (1) Charles Dickens
- (2) Hans Christian Andersen
- (3) Arthur Conan Doyle
- (4) None of these

20. Long narrow Kashmiri boat is:



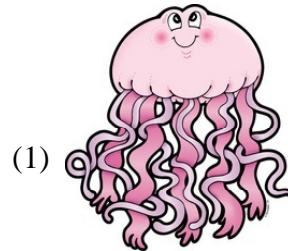
- (1) Chinkara                      (2) Shikaar
- (3) Shikara                      (4) None of these

21. Match the following:

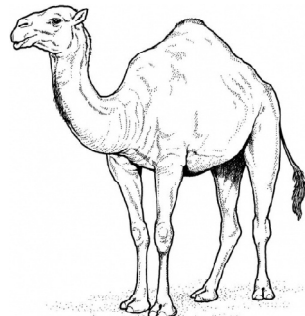
- |             |           |
|-------------|-----------|
| P. Ants     | 1. Pride  |
| Q. Cows     | 2. Pack   |
| R. Lions    | 3. School |
| S. Wolves   | 4. Herd   |
| T. Dolphins | 5. Colony |

- (1) P-1, Q-2, R-3 , S-4 and T-5
- (2) P-5, Q-4, R-1, S-2 and T-3
- (3) P-5, Q-4, R-3, S-2 and T-1
- (4) None of these

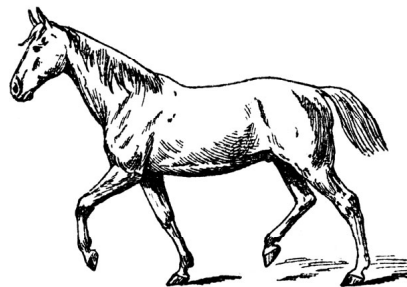
22. An animal without a backbone:



(1)



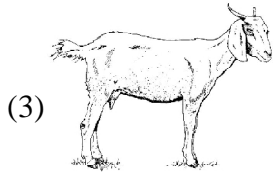
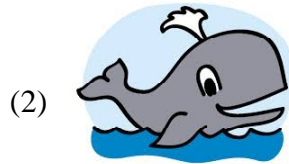
(2)



(3)

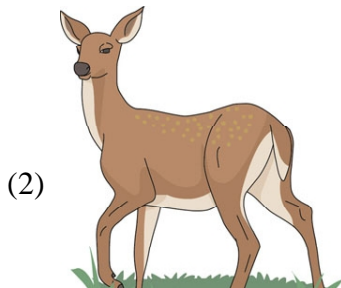
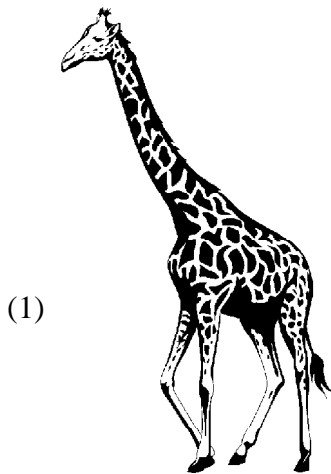
(4) None of these

23. An animal that uses sound to locate food:



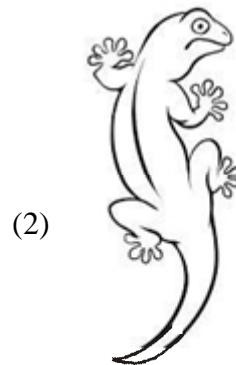
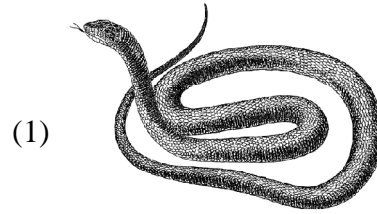
(4) None of these

24. An animal with thick fur:



(4) None of these

25. An animal that has external ears:



(4) None of these



**END OF THE EXAM**