



EHF

LEARNING FOR LIFE

EDUHEAL FOUNDATION

CLASS 1

LEVEL - 1

Set A1

EHF OLYMPIADS

- 4000 schools • 6 lakh students
- 10 olympiads • Global outreach



EHF INTERNATIONAL G.K. OLYMPIAD

Name :

Roll No :

Class :

School :



**NATIONAL
BIOTECHNOLOGY
OLYMPIAD**



**NATIONAL
MATHS
OLYMPIAD**



**NATIONAL
SCIENCE
OLYMPIAD**



**INTERNATIONAL
CYBER
OLYMPIAD**



**INTERNATIONAL
ENGLISH
OLYMPIAD**



**INTERNATIONAL
GENERAL KNOWLEDGE
OLYMPIAD**



BSE international finance olympiad (BIFO)



NATIONAL IIT-PMT OLYMPIAD (NIPO)

Level - 1 : All Level-1 successful* participants will get certificate, aptitude report and online subscription, and school toppers will be eligible for school hero medals.

Level - 2 : School toppers* will be selected for level-2-National level - online computer based interactive test held at exam centres all over India. Besides selection for level-3, winner will get merit certificate, medals, educational CDs, laptop, scholarship and other prizes. There is no level-2 in Art and Cricket.

Level - 3 : Toppers will qualify* for level-3-International level-where you will compete with students globally. Get selected for EHF's International Olympiad training camp. Only Indian organization giving students exposure to global competitions. Represent India & win laurels. Guidance by top scientists. Prizes ranges from cash (millions of \$), gadgets, foreign trips, publicity, fame, scholarships, Internships, conference participation and more.

* # See prospectus website for details

Instructions for the Candidate

1. You are allowed additional 10 minutes to fill the required details in the RESPONSE SHEET (OMR).
2. The question paper is made as per syllabus guidelines & pattern given in the information Booklet. The Question Paper for Classes 1 to 6 contains 25 Questions each to be answered in 40 minutes. The Question paper for classes 7 to 12 contains 50 Questions each to be answered in 60 minutes. All questions are compulsory. Further instructions are given in the instruction letter to the teacher.
3. Use the response sheet to mark your responses by darkening the required circle. The response sheet has to be returned to the foundation, duly filled in. THE STUDENT CAN RETAIN THE QUESTION PAPER.

WEBSITE : WWW.EDUHEALFOUNDATION.ORG
E-MAIL : INFO@EDUHEALFOUNDATION.ORG

ROUGH WORK

GENERAL KNOWLEDGE

1. The sheep is a



- (1) Carnivore
- (2) Omnivore
- (3) Herbivore
- (4) None of these

2. Name the gadget:



- (1) Radio
- (2) Calculator
- (3) Mobile phone
- (4) None of these

3. My clock says _____



- (1) Tick
- (2) Tock
- (3) Tick-Tock
- (4) None of these

4. There are many of us shining on all night.



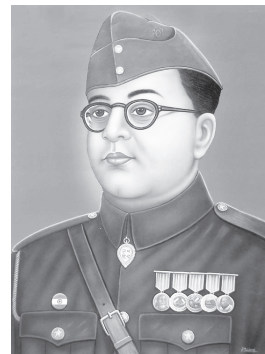
- (1) Clouds
- (2) Stars
- (3) Trees
- (4) None of these

5. Name the festival shown below.



- (1) Dussehra
- (2) Guru Parv
- (3) Eid
- (4) None of these

6. He fought for India's freedom
He taught us to say 'Jai Hind'



Who is he?

- (1) M. K. Gandhi
- (2) Netaji Subhash Chandra Bose
- (3) Dr. B. R. Ambedkar
- (4) None of these

7. Name the Dance.



- (1) Bhangra
- (2) Kathakali
- (3) Kathak
- (4) None of these

8. Makke Ki Roti and Sarson Ka Saag is the food of which Indian state?



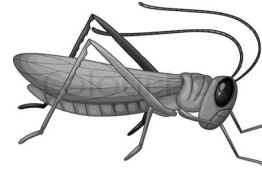
- (1) Punjab
- (2) Gujarat
- (3) Goa
- (4) None of these

9. A _____ lives in a hole.



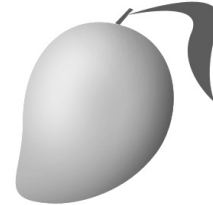
- (1) Fox
- (2) Spider
- (3) Mouse
- (4) None of these

10. Picture of _____



- (1) Housefly
- (2) Ant
- (3) Grasshopper
- (4) None of these

11. We eat the fruit of the _____ plant.



- (1) Mango
- (2) Carrot
- (3) Cotton
- (4) None of these

12. This is related to

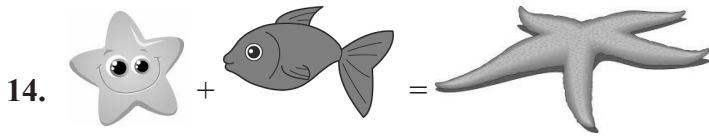


- (1) Cricket
- (2) Football
- (3) Golf
- (4) None of these

13. _____



- (1) Mermaid
- (2) Princess
- (3) Magician
- (4) None of these



- (1) Starfish
- (2) Screw driver
- (3) Hand finger
- (4) None of these

15. _____



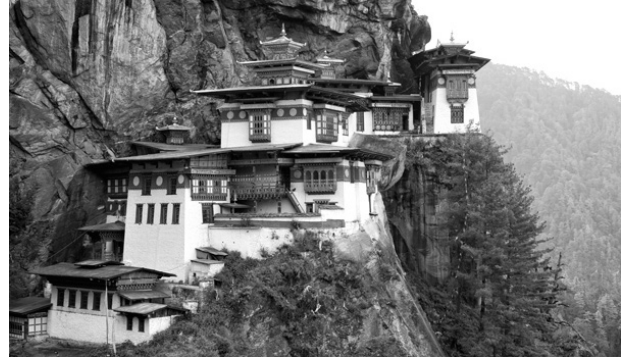
- (1) Paper holder
- (2) Computer
- (3) Fax machine
- (4) None of these

16. The _____ teaches us in school.



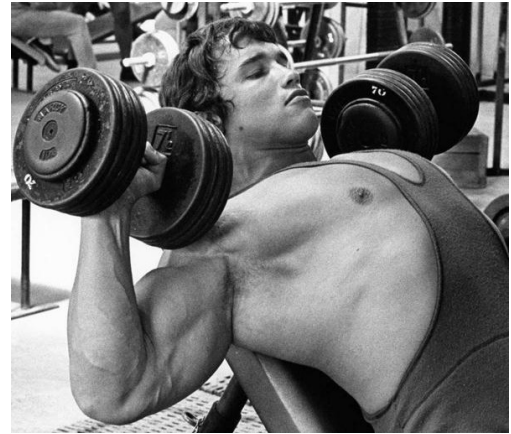
- (1) Carpenter
- (2) Teacher
- (3) Chauffeur
- (4) None of these

17. The capital of Bhutan is _____



- (1) Thimphu
- (2) Kathmandu
- (3) Dhaka
- (4) None of these

18. _____



- (1) Cycling
- (2) Weightlifting
- (3) Hockey
- (4) None of these

19. Lotus grows in _____



- (1) Desert
- (2) Clear water
- (3) Muddy water
- (4) None of these

20. Gulliver's _____

- (1) Running
- (2) Dancing
- (3) Travels
- (4) None of these

INTERACTIVE SECTION

21. Aladdin and the _____



- (1) Travels
- (2) Hood
- (3) Magic lamp
- (4) None of these

22. One who sells flowers is _____.



- (1) Baker
- (2) Ornithologist
- (3) Florist
- (4) None of these

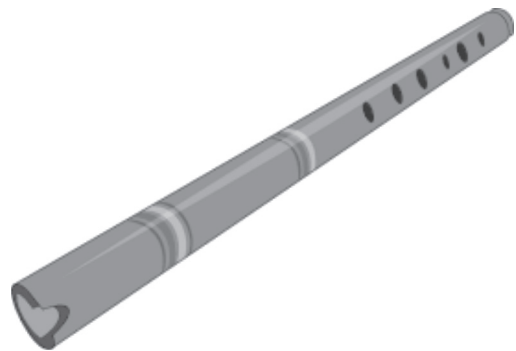
23. Silver Jubilee

- (1) 15 years
- (2) 35 years
- (3) 25 years
- (4) None of these

24. Rice, wheat, barley are _____

- (1) Utensil
- (2) Tools
- (3) Grains
- (4) None of these

25. Which musical instrument can be associated with a bird?



- (1) Flute
- (2) Piano
- (3) Tabla
- (4) None of these



END OF THE EXAM