



EDUHEAL FOUNDATION



INTERACTIVE OLYMPIADS

EDUHEAL FOUNDATION CONDUCTS 6 OLYMPIADS ANNUALLY REACHING OUT TO 3,500 + SCHOOLS
• 4 LAKH + STUDENTS • 50,000 COORDINATING TEACHERS AND HAVING 500 RESOURCE PERSONS
IN ENGLISH / MATHS / SCIENCE / BIOTECH / COMPUTER / G.K. & 300 REGIONAL COORDINATORS.

WEBSITE : WWW.EDUHEALFOUNDATION.ORG • E-MAIL : EDUHEALFOUNDATION@GMAIL.COM

ICO INTERNATIONAL CYBER OLYMPIAD	NISO NATIONAL INTERACTIVE SCIENCE OLYMPIAD	NIMO NATIONAL INTERACTIVE MATHS OLYMPIAD	NBTO NATIONAL BIOTECHNOLOGY OLYMPIAD	IEO INTERNATIONAL ENGLISH OLYMPIAD	IGO INTERNATIONAL G.K. OLYMPIAD
---	---	---	--	---	--

**NATIONAL
BIOTECHNOLOGY
OLYMPIAD**

N B T O

5
Class

A1
Paper
Code

Academic Partner ——— WWW.EDUSYS.IN

EtG
BOOKS

Creating
SUCCESS
Stories

A Unit of EDUSYS LEARNING MEDIA

AIEEE • IIT • PMT • OLYMPIADS





IMPORTANT INFORMATION

- You are allowed additional 10 minutes to fill the required details in the **RESPONSE SHEET**.
- The question paper is made as per syllabus guidelines & pattern given in the information Booklet. The Question Paper for Classes 1 to 6 contains 25 Questions each to be answered in 40 minutes. The Question paper for classes 7 to 12 contains 50 Questions each to be answered in 60 minutes. All questions are compulsory. Further instructions are given in the instruction letter to the coordinator teacher.
- Use the response sheet to mark your responses by darkening the required circle. The response sheet has to be returned to the foundation, duly filled in. The student can retain the Question Paper.

GENERAL KNOWLEDGE

- A 'hole' over Antarctica is due to
 - Space satellites
 - Melting of ice
 - Loss of ozone layer
 - None of these
- The glaciers melt due to
 - Heat stroke
 - Global warming
 - Sublimation
 - None of these
- Which of these is a result of burning fossil fuels?
 - Acid rain
 - Hydroelectric energy
 - Clean water
 - None of these
- How can we re-use the bad river water?
 - Boiling the water in houses
 - Cleaning the water in treatment plants
 - Filtering the water with cloth
 - None of these
- A blanket of air around the earth is called
 - Atmosphere
 - Universe
 - Hydrosphere
 - None of these

EVS

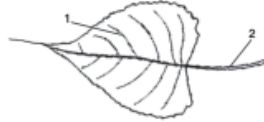
- Femur, tibia and Fibula are the bones of
 - Palm
 - Legs
 - Arms
 - None of these
- Humerus, radius and ulna are bones of
 - 
 - 
 - 
 - None of these
- The food factory of the plant is
 - Stem
 - Root
 - Leaf
 - None of these
- This experiment shows that
 - 
 - Air has weight
 - Air is visible
 - None of these
 - Air has odour
 - None of these
- Fish swims with the help of
 - Gills
 - Fins
 - Wings
 - None of these

11. All insects have
 (1) four legs (2) Two legs
 (3) Six legs (4) None of these

12. Mushroom are
 (1) Non green plants
 (2) Flowering Plants
 (3) Green plants
 (4) None of these



13. In the given diagram 1 is _____ & 2 is _____
 (1) Lamina, Midrib
 (2) Petiole, Vein
 (3) Midrib, Petiole
 (4) None of these



14. Changing of caterpillar into butterfly is
 (1) Movement (2) Growth
 (3) Circulation (4) None of these



- (1) Carnivorous (2) Omnivorous
 (3) Herbivorous (4) None of these
16. The process of removing salt from sea water is called
 (1) Desalination (2) Calcination
 (3) evaporation (4) None of these

17. Which of these is the correct sequence of development?
 (1) Tissues → Cells → Systems → Organs
 (2) Cells → Tissues → System → Organs
 (3) Cells → Tissues → Organs → System
 (4) None of these

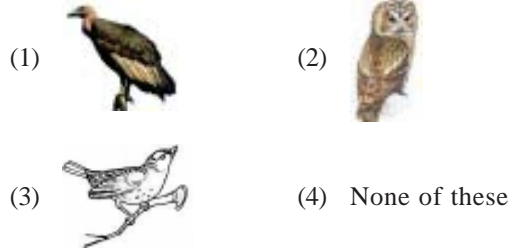
18. Match the following:
- | | |
|-----------------|-----------|
| (i) Xerophyte | A. Frog |
| (ii) Hydrophyte | B. Monkey |
| (iii) Amphibian | C. Cactus |
| (iv) Arboreal | D. Lotus |
- (1) (i) – B, (ii) – C, (iii) – D, (iv) – A
 (2) (i) – C, (ii) – D, (iii) – A, (iv) – B
 (3) (i) – D, (ii) – C, (iii) – A, (iv) – B
 (4) None of these

19. Find the odd one out
 (1) Honey (2) Radish
 (3) Milk (4) None of these

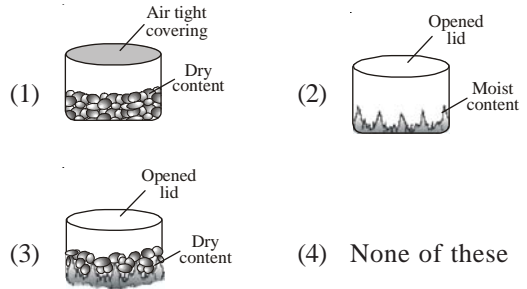
20. Which is not part of salad?
 (1) Cucumber (2) Pumpkin
 (3) Onion (4) None of these

EtG INTERACTIVE SECTION

21. Of the following which is a scavenger?



22. In which Beaker the chances of growing bacteria is highest?



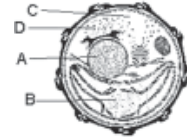
23. What is this?

- (1) Ball
 (2) Atlas
 (3) Globe
 (4) None of these

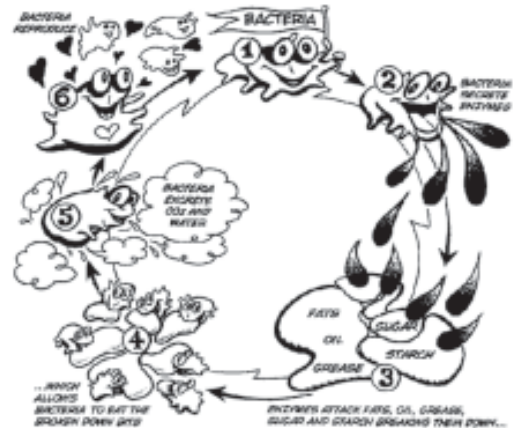


24. Which part represents **Nucleus** where the DNA is found in the cell

- (1) A
 (2) C
 (3) D
 (4) None of these



- 25.



The picture given above shows eating/cleaning of oil spills by bacteria. This process is called

- (1) Environmental cleaning
 (2) Fermentation
 (3) Bioremediation
 (4) None of these



END OF THE EXAM