

EDUHEAL FOUNDATION

EDUHEAL FOUNDATION CONDUCTS 8 OLYMPIADS ANNUALLY REACHING OUT TO 3,500 + SCHOOLS

• 5 LAKH + STUDENTS • 50,000 TEACHERS AND HAVING 500 RESOURCE PERSONS

IN ENGLISH / MATHS / SCIENCE / BIOTECH / COMPUTER / G.K. / ARTS / CRICKET / FINANCE & 300 REGIONAL COORDINATORS.

WEBSITE : WWW.EDUHEALFOUNDATION.ORG • E-MAIL : INFO@EDUHEALFOUNDATION.ORG

ICO INTERNATIONAL CYBER OLYMPIAD	NISO NATIONAL INTERACTIVE SCIENCE OLYMPIAD	NIMO NATIONAL INTERACTIVE MATHS OLYMPIAD	NBTO NATIONAL BIOTECHNOLOGY OLYMPIAD	IEO INTERNATIONAL ENGLISH OLYMPIAD	IGO INTERNATIONAL G.K. OLYMPIAD	BIFO BSE INTERNATIONAL FINANCE OLYMPIAD	NIPO NATIONAL IIT-PMT OLYMPIAD
---	---	---	--	---	--	--	---

Level - 1 : All Level-1 successful* participants will get certificate, aptitude report and online subscription, and school toppers will be eligible for school hero medals.

Level - 2 : School toppers* will be selected for level-2-National level - online computer based interactive test held at exam centres all over India. Besides selection for level-3, winner will get merit certificate, medals, educational CDs, laptop, scholarship and other prizes. There is no level 2 in Art, G.K. and Biotech.

Level - 3 : Toppers will qualify# for level 3-International level-where you will compete with students globally. Get selected for EHF's International Olympiad training camp. Only Indian organization giving students exposure to global competitions. Represent India & win laurels. Guidance by top scientists. Prizes ranges from cash (millions of \$), gadgets, foreign trips, publicity, fame, scholarships, Internships, conference participation and more. Level 3 is in Maths, Science & Cyber only.

*# See prospectus/website for details

- You are allowed additional 10 minutes to fill the required details in the **RESPONSE SHEET (OMR)**. **STUDENTS OF CLASS 1 & 2 HAVE TO UNDERLINE** THE CORRECT ANSWER IN THE QUESTION PAPER ITSELF. THEY ARE NOT REQUIRED TO USE THE RESPONSE SHEET (OMR). THEY HAVE TO FILL THEIR NAME, ROLL NUMBER, CLASS, SCHOOL NAME IN THE SPACE PROVIDED IN THE QUESTION PAPER.
- The question paper is made as per syllabus guidelines & pattern given in the information Booklet. The Question Paper for Classes 1 to 6 contains 25 Questions each to be answered in 40 minutes. The Question paper for classes 7 to 12 contains 50 Questions each to be answered in 60 minutes. All questions are compulsory. Further instructions are given in the instruction letter to the teacher.
- Use the response sheet to mark your responses by darkening the required circle. The response sheet has to be returned to the foundation, duly filled in. **THE STUDENT CAN RETAIN THE QUESTION PAPER EXCEPT FOR CLASSES 1 AND 2.**

EHF
NATIONAL
BIOTECHNOLOGY
OLYMPIAD

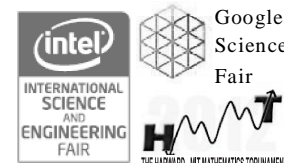
N B T O

9
Class

A1
Paper
Code

L E V E L - 1

Academic Partner — WWW.EDUSYS.IN



GENERAL KNOWLEDGE

- The largest coal-fired power plant in the world:
 - (1) Grand Inga
 - (2) Taichung power plant
 - (3) Tucurui power plant
 - (4) None of these
- Which of the following has the largest biodiversity in the world?
 - (1) Amazon rainforest
 - (2) Pacific temperate rainforest
 - (3) Sinharaja forest reserve
 - (4) None of these
- Which is the greenest country?
 - (1) Germany
 - (2) Spain
 - (3) Switzerland
 - (4) None of these
- The world's second most polluted city:
 - (1) Ulan Bator, Mangolia
 - (2) Beijing
 - (3) Canada
 - (4) None of these
- The green houses in Italy has been widely used for the cultivation of which vegetable crops?
 - (1) Cauliflower and cabbage
 - (2) Watermelon and capsicum
 - (3) Ladies finger and brinjal
 - (4) None of these
- A device used in vehicles to convert harmful carbonmonoxide and nitrogen oxide to harmless carbondioxide and water:
 - (1) Aerosol cans
 - (2) Dynamo
 - (3) Catalytic converter
 - (4) None of these
- A disease caused by mercury poisoning:
 - (1) Minamata disease
 - (2) Wilsons disease
 - (3) Fanconi syndrome
 - (4) None of these

8. An endangered bracket fungus found on noble fir trees:
 (1) *Armillaria gallica*
 (2) *Bridgeoporus nobillissimus*
 (3) *Saccharomyces cerevesiae*
 (4) None of these
9. Which seeds has been called 'natures perfect food' because of its balanced concentrations of omega fatty acids?
 (1) Hemp seeds (2) Flax seeds
 (3) Pumpkin seeds (4) None of these
10. Codliver oil is the best source of:
 (1) Minerals (2) Omega 3 fatty acids
 (3) Cholesterol (4) None of these
18. Which of the following is used in automobile battery casings?
 (1) Polyvinyl chloride (2) Polypropylene
 (3) Polystyrene (4) None of these
19. Vulnerable species are those:
 (1) Species that is likely to become endangered in the near future
 (2) Species that have already become extinct
 (3) Both (1) and (2)
 (4) None of these
20. Photochemical smog affects the plant's growth because:
 (1) It forms a layer on the leaves affecting stomata
 (2) It reduces the level of chlorophyll
 (3) Both (1) and (2)
 (4) None of these

LIFE SCIENCE

11. Which tissues in plants are considered as dead cells?
 (1) Collenchyma (2) Sclerenchyma
 (3) Parenchyma (4) None of these
12. Plant breeding is defined as the science that deals with the study of:
 (1) Improvement of soil structure
 (2) Improvement in livestock
 (3) Improvement in genotype of plants
 (4) None of these
13. Which region is called the megadiversity on earth?
 (1) Warm and humid tropical regions
 (2) Warm temperate zone
 (3) Frigid zone
 (4) None of these
14. Hydra and jelly fish belongs to:
 (1) Platyhelminthes (2) Porifera
 (3) Coelenterata (4) None of these
15. What are acute diseases?
 (1) Diseases that last for a longtime
 (2) Diseases at the time of birth
 (3) Diseases that last only for a short period of time
 (4) None of these
16. The first drug produced on a large scale for the treatment and prevention of 'malaria infection':
 (1) Chloroquine (2) Mefloquine
 (3) Primaquine (4) None of these
17. All of the following causes poultry diseases except:
 (1) Fungi (2) Bacteria
 (3) Algae (4) None of these
21. Which are the storage organelles that store starch for the synthesis of fatty acids and terpenes?
 (1) Plasmodesmata (2) Plastids
 (3) Chloroplasts (4) None of these
22. Bacteria do not have:
 (1) Cell nucleus (2) Cell membrane
 (3) Cell wall (4) None of these
23. A chemical present in the bark of trees:
 (1) Lignin (2) Suberin
 (3) Latex (4) None of these
24. Which type of tissue is present in celery?
 (1) Parenchyma (2) Collenchyma
 (3) Sclerenchyma (4) None of these
25. Which is a fat storing tissue?
 (1) Nervous tissue (2) Fibrous tissue
 (3) Adipose tissue (4) None of these
26. The floating stage of coelenterates is called:
 (1) Polyp (2) Medusa
 (3) Buds (4) None of these
27. Long, thin and flexible corkscrew-shaped bacteria:
 (1) *Spirillum* (2) *Spirochete*
 (3) *Vibrio* (4) None of these
28. Removal of stamens from a bisexual parent before they burst and shed is known as:
 (1) Agronomy (2) Hybridization
 (3) Emasculation (4) None of these
29. Nitrification reaction occurs fastest at a pH range:
 (1) 8 to 9 (2) 7 to 8
 (3) 5 to 6 (4) None of these

30. The practice of keeping birds in captivity using controlled conditions normally for business, research and conservation purpose:

- (1) Apiculture (2) Aquaculture
(3) Aviculture (4) None of these

31. Which seeds are used in mixed cropping in India?

- (1) Bajra (2) Red gram
(3) Both (1) and (2) (4) None of these

32. Which is a fumigant widely used in pest control?

- (1) Sulfuryl fluoride (2) Chloroform
(3) Mercuric chloride (4) None of these

33. "Salting fields" was a common tactic during war as it would kill the crops in the field causing food shortages. This happens because:

- (1) In hyper solution, plant cells will lose water and the cells shrink causing wilting
(2) In hypo solution, plant cells will burst by the entry of water and there by causing wilting
(3) Both (1) and (2) (4) None of these

34. The primary or rudimentary leaf of the embryo of seed plants:

- (1) Phyllodes (2) Cotyledon
(3) Euphylls (4) None of these

35. Which of the following is an insecticide?

- (1) 2, 4-Dichlorophenoxy acetic acid
(2) Benthio carb
(3) Butachlor
(4) None of these

36. The growing of different crops in pre-planned succession is called:

- (1) Inter cropping (2) Mixed cropping
(3) Crop rotation (4) None of these

37. Which of the following comes under thallophytes?

- (1) Algae (2) Lichens
(3) Both (1) & (2) (4) None of these

38. Agar which is commonly used as a thickener in ice cream, jams and soup is:

- (1) A bacterium (2) A protista
(3) An algae (4) None of these

39. Striated muscles are:

- (1) Voluntary muscles (2) Involuntary muscles
(3) Both (1) & (2) (4) None of these

40. Which is an example for a connective tissue?

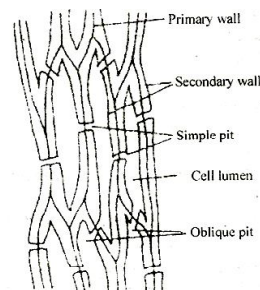
- (1) Blood (2) Bone
(3) Both (1) & (2) (4) None of these

INTERACTIVE SECTION

41. When a boy is born with at least one extra X chromosome which is written as XXY, the condition is called:

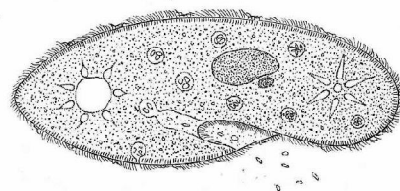
- (1) Klinefelter syndrome (2) Down syndrome
(3) Turner syndrome (4) None of these

42. Which type of tissue is shown in the given diagram?



- (1) Parenchyma (2) Collenchyma
(3) Sclerenchyma (4) None of these

43. Which animal is called the 'slipper animalcule'?



- (1) Amoeba (2) Paramecium
(3) Plasmodium (4) None of these

44. Why should preventive measures and biological control methods be preferred for protecting crops?

- (1) They do not cause environmental pollution
(2) They protect crops from the beginning that is before weeds, pests and diseases tend to affect the plants
(3) Both (1) & (2)
(4) None of these

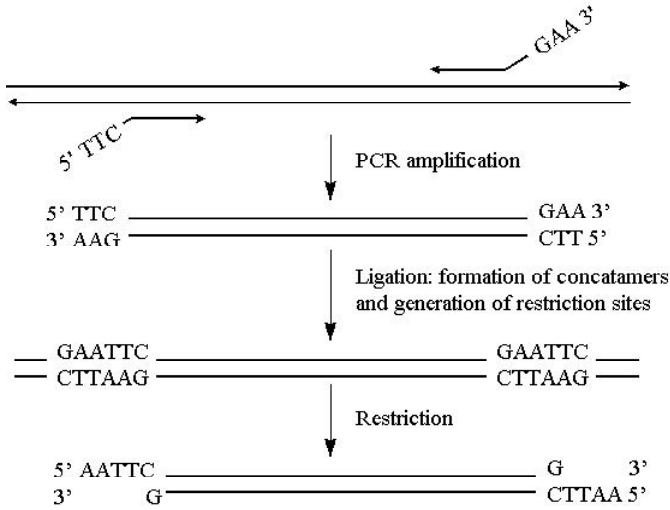
45. Melamine plates should not be used for eating food because:

- (1) Melamine is a thermosetting non-biodegradable plastic which may cause cancer
(2) Melamine is a thermoplastic which is non-biodegradable and causing respiratory infection
(3) Melamine is a thermosetting biodegradable plastic which may cause skin diseases
(4) None of these

46. 'Venus flower basket' is the dried skeleton of:

- (1) Euspongia
- (2) Euplectella
- (3) Spongilla
- (4) None of these

47. The below diagram shows which technique?



- (1) Gene cloning
- (2) Hybridization
- (3) PCR
- (4) None of these

48. Pseudostratified tissue has a distinctive appearance because:

- (1) The nuclei of individual cells do not line up perfectly
- (2) Cilia is attached to the surface of the cells
- (3) Cells are square and formed in perfect blocks
- (4) None of these

49. In a twenty year old woody stem:

- (1) The most abundant tissue would be the secondary phloem
- (2) The most abundant tissue would be the secondary xylem
- (3) The oldest vascular cambium would be inactive
- (4) None of these

50. Fruits derived from a single flower with more than one ovary are:

- (1) True berries
- (2) Drupes
- (3) Aggregate fruits
- (4) None of these



END OF THE EXAM