



EDUHEAL FOUNDATION

EDUHEAL FOUNDATION CONDUCTS 8 OLYMPIADS ANNUALLY REACHING OUT TO 3,500 + SCHOOLS
• 5 LAKH + STUDENTS • 50,000 TEACHERS AND HAVING 500 RESOURCE PERSONS
IN ENGLISH / MATHS / SCIENCE / BIOTECH / COMPUTER / G.K. / ARTS / CRICKET / FINANCE & 300 REGIONAL COORDINATORS.

WEBSITE : WWW.EDUHEALFOUNDATION.ORG • E-MAIL : INFO@EDUHEALFOUNDATION.ORG

ICO INTERNATIONAL CYBER OLYMPIAD	NISO NATIONAL INTERACTIVE SCIENCE OLYMPIAD	NIMO NATIONAL INTERACTIVE MATHS OLYMPIAD	NBTO NATIONAL BIOTECHNOLOGY OLYMPIAD	IEO INTERNATIONAL ENGLISH OLYMPIAD	IGO INTERNATIONAL G.K. OLYMPIAD	BIFO BSE INTERNATIONAL FINANCE OLYMPIAD	NIPO NATIONAL IIT-PMT OLYMPIAD
---	---	---	--	---	--	--	---

Level - 1 : All Level-1 successful* participants will get certificate, aptitude report and online subscription, and school toppers will be eligible for school hero medals.

Level - 2 : School toppers* will be selected for level-2-National level - online computer based interactive test held at exam centres all over India. Besides selection for level-3, winner will get merit certificate, medals, educational CDs, laptop, scholarship and other prizes. There is no level 2 in Art, Cricket, Cyber, NIPO and Biotech.

Level - 3 : Toppers will qualify# for level 3-International level-where you will compete with students globally. Get selected for EHF's International Olympiad training camp. Only Indian organization giving students exposure to global competitions. Represent India & win laurels. Guidance by top scientists. Prizes ranges from cash (millions of \$), gadgets, foreign trips, publicity, fame, scholarships, Internships, conference participation and more.

* # See prospectus/website for details

1. You are allowed additional 10 minutes to fill the required details in the **RESPONSE SHEET (OMR)**.
2. The question paper is made as per syllabus guidelines & pattern given in the information Booklet. The Question Paper for Classes 1 to 6 contains 25 Questions each to be answered in 40 minutes. The Question paper for classes 7 to 12 contains 50 Questions each to be answered in 60 minutes. All questions are compulsory. Further instructions are given in the instruction letter to the teacher.
3. Use the response sheet to mark your responses by darkening the required circle. The response sheet has to be returned to the foundation, duly filled in. **THE STUDENT CAN RETAIN THE QUESTION PAPER.**

**NATIONAL
BIOTECHNOLOGY
OLYMPIAD**

N B T O

6
Class

A1
Paper
Code

L E V E L - 1

GENERAL KNOWLEDGE

1. Physical remains like_____ and jewellery help archaeologists to know about the past.

- (1) books (2) bones
(3) both (1) & (2) (4) none of these

2. Which gas is mainly responsible for green house effect?

- (1) CO₂ (2) O₂
(3) H₂ (4) None of these

3. The largest unit of living organisms on earth is :

- (1) Ecosystem (2) Biome
(3) Biosphere (4) None of these

4. Which is the only metal that exists in liquid form at normal room temperature (25 degree celsius)?

- (1) Mercury (2) Cesium

(3) Gallium (4) None of these

5. In humans, the deficiency of Vitamin C leads to which disease ?

- (1) Beriberi (2) Scurvy
(3) Rickets (4) None of these

EVS

6. Synthetic fibres are obtained from_____ .

- (1) Animals
(2) Plants
(3) Petroleum
(4) None of these

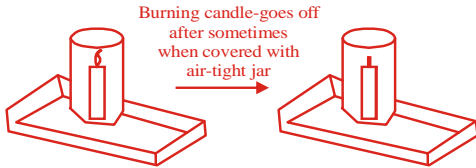
7. The smallest bone in the human body is--

- (1) Stapes
(2) Femur
(3) Nasal
(4) None of these

8. A polished silvery surface is

- (1) good absorber of heat
- (2) good reflector of heat
- (3) poor reflector of heat
- (4) none of these

9.






This experiment shows that _____

- (1) oxygen is necessary
- (2) carbon dioxide is necessary
- (3) both (1) and (2) are necessary
- (4) none of these

10. Converting plant and animal waste including that from kitchen, into manure, is called _____ .

- (1) vermicomposting
- (2) land fill
- (3) composting
- (4) none of these

11. Which of the following is a second class lever?

- (1) 
- (2) 
- (3) 
- (4) None of these

12. Abiotic environment does not include

- (1) air
- (2) water
- (3) plants
- (4) none of these

13. If waste materials contaminate the source of drinking water, which of the following disease will spread?

- (1) Scurvy
- (2) Typhoid
- (3) Malaria
- (4) None of these

14. Iodine sublimes on heating i.e. directly changes into a gas state without going through liquid state. Which of the following change is *not true* for iodine sublimation?

- (1) Change is fast
- (2) Change is physical

- (3) Change is chemical
- (4) None of these

15. Read the following statements about diseases.

- (i) They are caused by germs.
 - (ii) They are caused due to lack of nutrients in our diet.
 - (iii) They can be passed on to another person through contact.
 - (iv) They can be prevented by taking a balanced diet.
- Which pair of statements best describe a deficiency disease?

- (a) (i) and (ii)
- (b) (ii) and (iii)
- (c) (ii) and (iv)
- (d) None of these

16. The food prepared by leaves is stored as _____ .

- (1) Starch
- (2) Sugars
- (3) Proteins
- (4) None of these

17. Pollen grains are produced in _____ ?

(1)



Flower

(2)



Ovary

(3)



Anther

(4) None of these

18. Which is not matched? [Disease-microorganism-Transmission]

- (1) Polio – Virus – Air
- (2) Tuberculosis – Bacteria – Water
- (3) Cholera – Bacteria – Food
- (4) None of these

19. Acid rain is formed due to contribution from which of the following pair of gases?

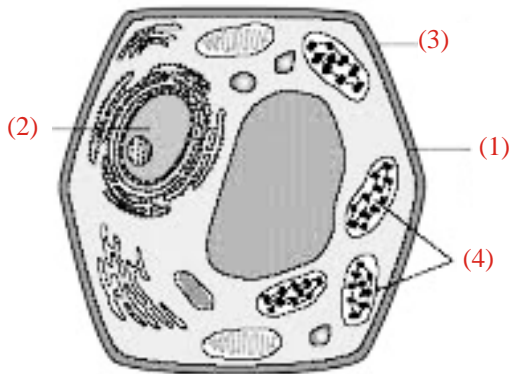
- (1) Methane and ozone
- (2) Oxygen and nitrous oxide
- (3) Methane and sulphur dioxide
- (4) None of these

20. Hormones and enzymes can be developed through

- (1) virus
- (2) bacteria
- (3) fungus
- (4) none of these

INTERACTIVE SECTION

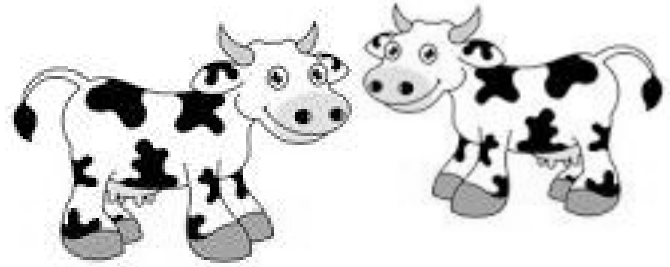
21. Which is the correct labelling of the cell (from 1-4)?



- (1) 1– nucleus, 2– chromosome, 3– cytoplasm, 4– cell membrane,
- (2) 1– cell membrane, 2– chromosome, 3 – nucleus, 4– cytoplasm,
- (3) 1– cell membrane, 2– nucleus, 3– chromosome, 4– cytoplasm
- (4) None of these

22. In term of biotechnology what do you call the two cows in the picture.

Haven't I seen you somewhere before? Moo?



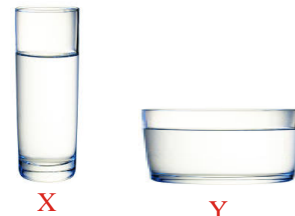
- (1) Mirror images
- (2) Clones
- (3) Sisters
- (4) None of these

23. Sound is made when a drumstick hits the drum. This happens because the force of the drumstick on the drum causes-



- (1) Vibrations
- (2) Electrical current
- (3) Heat energy
- (4) None of these

24. Two containers X and Y having equal amount of water, were left in a room for a day. In which container water will be less?



- (1) X and Y both
- (2) X
- (3) Y
- (4) None of these

25. Which statement describes the atmosphere of the planet correctly?

- (1) Venus is mostly carbon-dioxide
- (2) Mercury is mostly nitrogen
- (3) Earth is mostly oxygen
- (4) None of these



END OF THE EXAM