



EHF

LEARNING FOR LIFE

EDUHEAL FOUNDATION

CLASS 3

LEVEL - 1

Set A1

EHF OLYMPIADS

- 4000 schools • 6 lakh students
- 10 olympiads • Global outreach



EHF

NATIONAL BIOTECHNOLOGY OLYMPIAD

Name :

Roll No :

Class :

School :



art and cricket clinic contest

NATIONAL BIOTECHNOLOGY OLYMPIAD



NATIONAL MATHS OLYMPIAD



NATIONAL SCIENCE OLYMPIAD



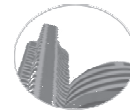
INTERNATIONAL CYBER OLYMPIAD



INTERNATIONAL ENGLISH OLYMPIAD



INTERNATIONAL GENERAL KNOWLEDGE OLYMPIAD



BSE INVESTORS' PROTECTION FUND

BSE international finance olympiad (BIFO)



NATIONAL IIT-PMT OLYMPIAD (NIPO)

Level - 1 : All Level-1 successful* participants will get certificate, aptitude report and online subscription, and school toppers will be eligible for school hero medals.

Level - 2 : School toppers* will be selected for level-2-National level - online computer based interactive test held at exam centres all over India. Besides selection for level-3, winner will get merit certificate, medals, educational CDs, laptop, scholarship and other prizes. There is no level-2 in Art and Cricket.

Level - 3 : Toppers will qualify* for level-3-International level-where you will compete with students globally. Get selected for EHF's International Olympiad training camp. Only Indian organization giving students exposure to global competitions. Represent India & win laurels. Guidance by top scientists. Prizes ranges from cash (millions of \$), gadgets, foreign trips, publicity, fame, scholarships, Internships, conference participation and more.

* See prospectus website for details

Instructions for the Candidate

1. You are allowed additional 10 minutes to fill the required details in the RESPONSE SHEET (OMR).
2. The question paper is made as per syllabus guidelines & pattern given in the information Booklet. The Question Paper for Classes 1 to 6 contains 25 Questions each to be answered in 40 minutes. The Question paper for classes 7 to 12 contains 50 Questions each to be answered in 60 minutes. All questions are compulsory. Further instructions are given in the instruction letter to the teacher.
3. Use the response sheet to mark your responses by darkening the required circle. The response sheet has to be returned to the foundation, duly filled in. THE STUDENT CAN RETAIN THE QUESTION PAPER.

WEBSITE : WWW.EDUHEALFOUNDATION.ORG
E-MAIL : INFO@EDUHEALFOUNDATION.ORG

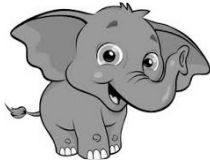
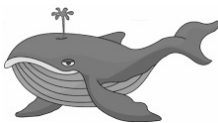
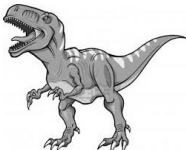
ROUGH WORK

GENERAL KNOWLEDGE

1. Which is the largest living bird on Earth?

- (1) Emu (2) Ostrich
(3) Albatross (4) None of these

2. Which amongst the following is the largest mammal?

- (1)  (2) 
(3)  (4) None of these

3. Which part becomes modified as the tusk of elephant?

- (1) Canine (2) Premolar
(3) Second Incisor (4) None of these

4. Which of the following is the National Aquatic Animal of India?

- (1) Salt Water Crocodile (2) Sea Turtle
(3) Dolphin (4) None of these

5. Which of the following are warm-blooded animals?

- (1) Whales (2) Lizards
(3) Crocodiles (4) None of these

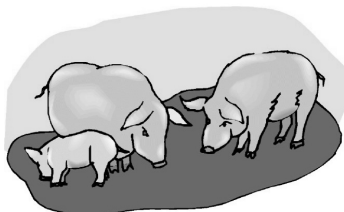
EVS

6. The plant which grows completely underwater is

- (1) Hydrilla (2) Lotus
(3) Both (1) and (2) (4) None of these

7. These are _____ animals.

- (1) Herbivores
(2) Omnivores
(3) Carnivores
(4) None of these



8. Atmosphere is a thin layer of

- (1) stones (2) water
(3) air (4) none of these

9. From where does most water evaporate?

- (1) Rivers (2) Lakes
(3) Oceans (4) None of these

10. Which is nearest star of the Earth?

- (1) Spica (2) Sun
(3) Sirius (4) None of these

11. Temperature of the human body is measured by

- (1) Computer (2) Calculator
(3) Thermometer (4) None of these

12. A man can survive without food for at least

- (1) One month (2) Three months
(3) Two months (4) None of these

13. We should not play with



- (4) None of these

14. Arrange the planets in increasing order of distance from Sun:

- (A) Mercury (B) Mars
(C) Uranus (D) Saturn
(1) A B C D (2) A B D C
(3) A D C B (4) None of these

15. When someone is injured, we should call a
 (1) Pilot (2) Doctor
 (3) Carpenter (4) None of these

16. We get food from which of the following?
 (1) Air (2) Water
 (3) Plants (4) None of these

17. Look at the figures carefully.



They all need _____ to move.

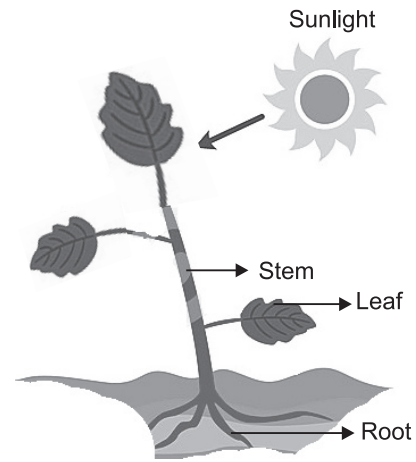
- (1) Sun (2) Air
 (3) Moon (4) None of these

18. Identify the fruit in the picture.



- (1) Mango (2) Strawberry
 (3) Apple (4) None of these

19. Which part of a plant converts the Sun's energy to make food?



- (1) Root (2) Leaf
 (3) Stem (4) None of these

20. Birds have _____ and _____ bones which help them to fly.

- (1) thin, hollow (2) thick, hollow
 (3) thick, solid (4) none of these

INTERACTIVE SECTION

21. We eat the roots of _____ plant.

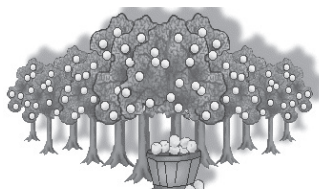
- (1) (2)
 (3) (4) None of these

22. Juice of _____ leaves is used for cough and cold.

- (1) Tulsi (2) Turmeric
 (3) Amla (4) None of these

23. Orchards are generally the _____ gardens.

- (1) Vegetable
 (2) Fruit
 (3) Flower
 (4) None of these



24. Ethanol is a biofuel obtained from _____ crop.

- (1) (2)
 (3) (4) All of these

25. Flower used for making perfumes-

- (1) (2)
 (3) Both (1) and (2) (4) None of these



END OF THE EXAM