



EHF
LEARNING FOR LIFE

**EDUHEAL
FOUNDATION**

**CLASS
4**

LEVEL - 1

Set A1

EHF OLYMPIADS

- 4000 schools • 6 lakh students
- 10 olympiads • Global outreach



**EHF
NATIONAL
BIOTECHNOLOGY OLYMPIAD**

Name :

Roll No :

Class :

School :



**NATIONAL
BIOTECHNOLOGY
OLYMPIAD**



**NATIONAL
MATHS
OLYMPIAD**



**NATIONAL
SCIENCE
OLYMPIAD**



**INTERNATIONAL
CYBER
OLYMPIAD**



**INTERNATIONAL
ENGLISH
OLYMPIAD**



**INTERNATIONAL
GENERAL KNOWLEDGE
OLYMPIAD**



BSE international finance olympiad (BIFO)



NATIONAL IIT-PMT OLYMPIAD (NIPO)

Level - 1 : All Level-1 successful* participants will get certificate, aptitude report and online subscription, and school toppers will be eligible for school hero medals.

Level - 2 : School toppers* will be selected for level-2-National level - online computer based interactive test held at exam centres all over India. Besides selection for level-3, winner will get merit certificate, medals, educational CDs, laptop, scholarship and other prizes. There is no level-2 in Art and Cricket.

Level - 3 : Toppers will qualify* for level-3-International level-where you will compete with students globally. Get selected for EHF's International Olympiad training camp. Only Indian organization giving students exposure to global competitions. Represent India & win laurels. Guidance by top scientists. Prizes ranges from cash (millions of \$), gadgets, foreign trips, publicity, fame, scholarships, Internships, conference participation and more.

* # See prospectus website for details

Instructions for the Candidate

1. You are allowed additional 10 minutes to fill the required details in the RESPONSE SHEET (OMR).
2. The question paper is made as per syllabus guidelines & pattern given in the information Booklet. The Question Paper for Classes 1 to 6 contains 25 Questions each to be answered in 40 minutes. The Question paper for classes 7 to 12 contains 50 Questions each to be answered in 60 minutes. All questions are compulsory. Further instructions are given in the instruction letter to the teacher.
3. Use the response sheet to mark your responses by darkening the required circle. The response sheet has to be returned to the foundation, duly filled in. THE STUDENT CAN RETAIN THE QUESTION PAPER.

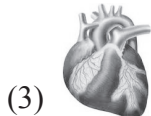
WEBSITE : WWW.EDUHEALFOUNDATION.ORG
E-MAIL : INFO@EDUHEALFOUNDATION.ORG

ROUGH WORK

GENERAL KNOWLEDGE

1. Photosynthesis takes place faster in
 (1) yellow light (2) white light
 (3) red light (4) none of these

2. Pyorrhoea is a disease of the



- (4) none of these

3. Plants that grow in saline water are called

- (1) halophytes (2) hydrophytes
 (3) mesophytes (4) none of these

4. Mumps is a disease caused by

- (1) fungus (2) bacterium
 (3) virus (4) none of these

5. Nymph is the name of young one of



- (4) none of these

EVS

6. Flowers that we eat as vegetable-



- (4) None of these

7. Yellow bags (pigments) inside a leaf are called

- (1) chlorophyll (2) carotene
 (3) xanthophyll (4) none of these

8. Arun's father and my father are brothers. Arun is my _____.

- (1) cousin (2) niece
 (3) aunt (4) none of these

9. My parents's parents are still alive. All four of my _____ are still alive.

- (1) grandfather (2) grandmother
 (3) grandparents (4) none of these

10. A bird-

- (1) croaks (2) chirps
 (3) roars (4) none of these

11. The image shown below is related to which occupation?

- (1) Agriculture
 (2) Mining
 (3) Both (1) and (2)
 (4) None of these

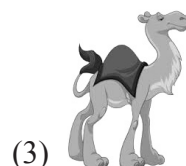
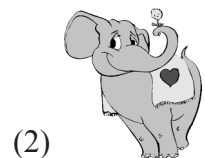


12. What are these?



- (1) Animal products (2) Plant products
 (3) Bacterial products (4) None of these

13. The animal used for traveling in forest is



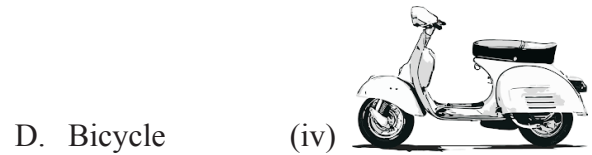
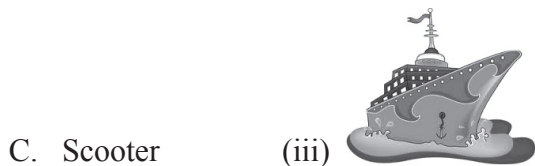
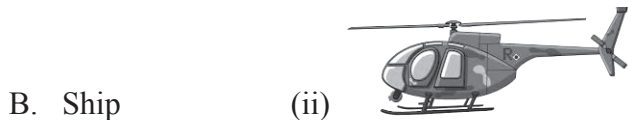
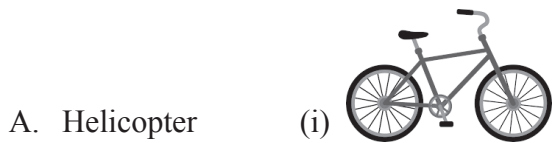
- (4) None of these

14. Tiny building blocks of our body are
 (1) organs (2) cells
 (3) tissues (4) none of these

15. When water evaporates, it changes into a
 (1) solid (2) mixture
 (3) gas (4) none of these

16. Houses on stilts are found in the regions with
 (1) heavy rain
 (2) constant floods
 (3) both (1) and (2)
 (4) none of these

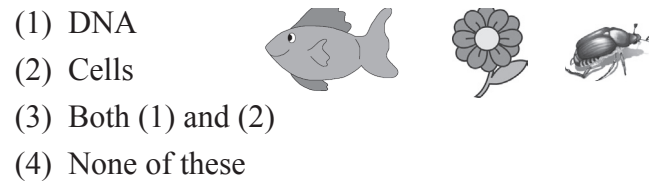
17. Match the columns:



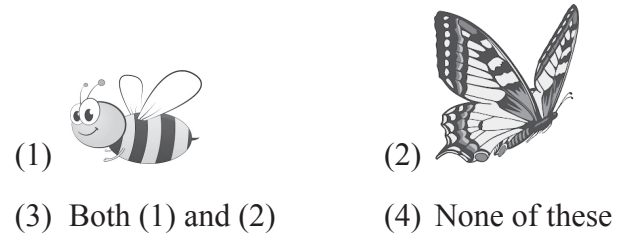
- (1) A-(ii), B-(iii), C-(iv), D-(i)
 (2) A-(iii), B-(iv), C-(i), D-(ii)
 (3) A-(iv), B-(i), C-(iii), D-(ii)
 (4) None of these

18. Flax is a
 (1) animal fibre (2) plant fibre
 (3) natural rubber (4) none of these

19. What is common in the given images?



20. Who is attracted to flowers?



INTERACTIVE SECTION

21. What type of scientist studies fossils?

- (1) Paleontologist
 (2) Physicist
 (3) Biologist
 (4) None of these



22. How old do remains have to be in order to be considered a fossil?

- (1) 100,000 years (2) 10,000 years
 (3) 1,000 years (4) None of these

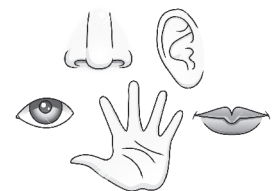
23. Fuel is used up to give energy in order to make things work. Petrol is a type of fuel used in vehicles to make them run. Which of these is also a fuel?

- (1) Water used in a bath
 (2) Food eaten by a person

- (3) Air pumped in cycle tyres
 (4) None of these

24. What system is in charge of the senses in the figures?

- (1) The Circulatory System
 (2) The Skeletal System
 (3) The Nervous System
 (4) None of these



25. Which of the following organs is also a muscle?

- (1) The Brain (2) The Kidney
 (3) The Heart (4) None of these



END OF THE EXAM