



# EHF

LEARNING FOR LIFE

## EDUHEAL FOUNDATION

# CLASS 9

## LEVEL - 1

## Set A1

### EHF OLYMPIADS

- 4000 schools • 6 lakh students
- 10 olympiads • Global outreach



### EHF

## NATIONAL BIOTECHNOLOGY OLYMPIAD

Name : .....

Roll No : .....

Class : .....

School : .....



### NATIONAL BIOTECHNOLOGY OLYMPIAD



### NATIONAL MATHS OLYMPIAD



### NATIONAL SCIENCE OLYMPIAD



### INTERNATIONAL CYBER OLYMPIAD



### INTERNATIONAL ENGLISH OLYMPIAD



### INTERNATIONAL GENERAL KNOWLEDGE OLYMPIAD



### BSE international finance olympiad (BIFO)



### NATIONAL IIT-PMT OLYMPIAD (NIPO)

**Level - 1 :** All Level-1 successful\* participants will get certificate, aptitude report and online subscription, and school toppers will be eligible for school hero medals.

**Level - 2 :** School toppers\* will be selected for level-2-National level - online computer based interactive test held at exam centres all over India. Besides selection for level-3, winner will get merit certificate, medals, educational CDs, laptop, scholarship and other prizes. There is no level-2 in Art and Cricket.

**Level - 3 :** Toppers will qualify\* for level-3-International level-where you will compete with students globally. Get selected for EHF's International Olympiad training camp. Only Indian organization giving students exposure to global competitions. Represent India & win laurels. Guidance by top scientists. Prizes ranges from cash (millions of \$), gadgets, foreign trips, publicity, fame, scholarships, Internships, conference participation and more.

\* # See prospectus website for details

#### Instructions for the Candidate

1. You are allowed additional 10 minutes to fill the required details in the RESPONSE SHEET (OMR).
2. The question paper is made as per syllabus guidelines & pattern given in the information Booklet. The Question Paper for Classes 1 to 6 contains 25 Questions each to be answered in 40 minutes. The Question paper for classes 7 to 12 contains 50 Questions each to be answered in 60 minutes. All questions are compulsory. Further instructions are given in the instruction letter to the teacher.
3. Use the response sheet to mark your responses by darkening the required circle. The response sheet has to be returned to the foundation, duly filled in. THE STUDENT CAN RETAIN THE QUESTION PAPER.

WEBSITE : [WWW.EDUHEALFOUNDATION.ORG](http://WWW.EDUHEALFOUNDATION.ORG)  
E-MAIL : [INFO@EDUHEALFOUNDATION.ORG](mailto:INFO@EDUHEALFOUNDATION.ORG)

# ROUGH WORK

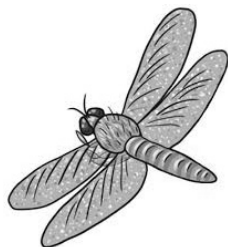
# GENERAL KNOWLEDGE

1. Most common disease of poultry in India is  
(1) fowl pox (2) tick fever  
(3) ranikhet (4) none of these

2. World Health Organization had declared \_\_\_\_\_ as International Year of freshwater.  
(1) 2001 (2) 2013  
(3) 2003 (4) None of these

3. National Science Centre is located at  
(1) Delhi (2) Bangalore  
(3) Bombay (4) None of these

4. How many legs does a dragonfly have?



- (1) 2 (2) 12  
(3) 6 (4) None of these
5. What is the biggest moth in the world, that is also found in Northeast India?  
(1) Grey moth (2) Atlas moth  
(3) Peacock moth (4) None of these
6. Dengue, also known as the 'breakbone fever', is a human disease transmitted by the mosquito called  
(1) Aedes aegypti (2) Psorophora  
(3) Mansoni (4) None of these

7. How many chambers does a cockroach's heart have?  
(1) 10  
(2) 13  
(3) 20  
(4) None of these

8. Which of the following have their taste buds on their feet?  
(1) Butterflies  
(2) Moths  
(3) Both (1) and (2)  
(4) None of these

9. LPG consists of mainly



- (1) ethane, hexane and nonane  
(2) methane, hexane and nonane  
(3) methane, butane and propane  
(4) none of these
10. Which shrub derives its name from the Sanskrit word meaning 'horse smell'?  
(1) Sanjivini  
(2) Ashwagandha  
(3) Sarpgandha  
(4) None of these




# LIFE SCIENCE

11. Number of chromosomes in a cell of human  
(1) 23 (2) 46  
(3) 56 (4) None of these

12. The agricultural implement used for removing weeds and for loosening soil is  
(1) Combine (2) Hoe

- (3) Drill (4) None of these

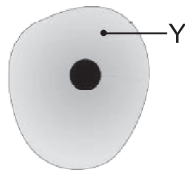
13. Which of the following is not a fungi?  
(a) Paramecium (b) Bread mould  
(c) Penicillium (d) Aspergillus  
(1) (a) (2) (b) and (c)  
(3) (b), (c) and (d) (4) None of these

14. An oxide solution of which of the following elements will turn blue litmus red?  
 (1) Calcium (2) Sulphur  
 (3) Iron (4) None of these
15. Fibre obtained by chemical treatment of wood pulp is called \_\_\_\_\_  
 (1) Natural silk (2) Rayon  
 (3) Nylon (4) None of these
16. Which is the hottest part in the flame of the candle?  
 (1) Blue (2) Yellow  
 (3) Black (4) None of these
17. A place where animals are protected out of their natural habitat is  
 (1) National park (2) Botanical garden  
 (3) Zoo (4) None of these
18. A single cell that can change its shape is  
 (1) Paramecium (2) WBCs  
 (3) RBCs (4) None of these
19. Internal fertilization does not occur in  
 (1)  (2)   
 (3)  (4) None of these
20. Bacteria that decompose organic wastes are called  
 (1) Lactobacillus bacteria  
 (2) Anaerobic bacteria  
 (3) Aerobic bacteria  
 (4) None of these
21. Which of the following is a pair of exhaustible natural resources?  
 (1) Coal and soil  
 (2) Water and petroleum  
 (3) Wild life and minerals  
 (4) None of these
22. Coal is processed in industries to get some useful products. Which of the following is not obtained from coal?  
 (1) Coal tar (2) Coal gas  
 (3) CNG (4) None of these
23. Naphthalene balls are obtained from coal tar and are used as  
 (1) mosquito repellent  
 (2) honey bee repellent  
 (3) moth repellent  
 (4) none of these
24. Richter scale is a  
 (1) logarithmic scale  
 (2) calculus scale  
 (3) volumetric scale  
 (4) none of these
25. Which of the following is an example of contact force?  
 (1) Magnetic force (2) Muscular force  
 (3) Electric force (4) None of these
26. The unit of measuring pressure is  
 (1) newton (2) newton/metre<sup>2</sup>  
 (3) ampere (4) none of these
27. What is the shape of muscle cells in humans?  
 (1) Spherical (2) Spindle shaped  
 (3) Rectangular (4) None of these
28. The outer covering of an animal cell is  
 (1) cell membrane  
 (2) cell wall  
 (3) both (1) and (2)  
 (4) none of these
29. The animals which give birth to young ones are known as  
 (1) Oviparous animals  
 (2) Viviparous animals  
 (3) Wild animals  
 (4) None of these




30. Which of the following organism is used in cheese ripening?
- (1) Lactobacilli
  - (2) Protozoa
  - (3) Moulds
  - (4) None of these

31. What is shown by the labelling line Y?

- (1) Vacuole
- (2) Cytoplasm
- (3) Lysosome
- (4) None of these



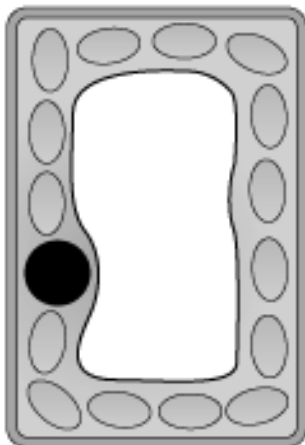
32. Which of the following figures depicts the position of pole star correctly?

- (1) 
- (2) 
- (3) 
- (4) None of these

33. In human beings, after fertilisation, the structure which gets embedded in the wall of uterus is

- (1) ovum
- (2) embryo
- (3) foetus
- (4) none of these

34. What type of cell is this likely to be?



- (1) Plant cell
- (2) Animal cell
- (3) Both (1) and (2)
- (4) None of these

35. Which among the following is a solid at room temperature?

- (1) Nitrogen
- (2) Potassium permanganate
- (3) Bromine
- (4) None of these

36. Liquid which evaporates more quickly is

- (1) spirit
- (2) water
- (3) grease
- (4) none of these

37. Which one of the following nutrients is not available in fertilizers?

- (1) Nitrogen
- (2) Phosphorus
- (3) Iron
- (4) None of these

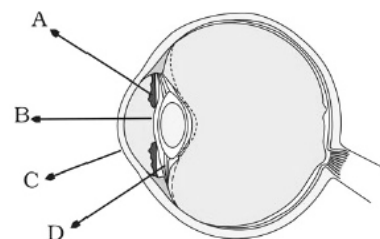
38. Unit of Inheritance is called \_\_\_\_\_.

- (1) gene
- (2) nucleus
- (3) cell
- (4) none of these

39. The main source of carbon monoxide pollution is

- (1) Crop dusting
- (2) Internal combustion engines
- (3) Acid rain
- (4) None of these

40. In the figure of the human eye, the cornea is represented by the letter



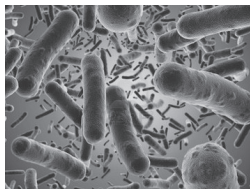
- (1) A
- (2) B
- (3) C
- (4) None of these

# INTERACTIVE SECTION

41. Age of a tree can be estimated by

- (1) its height and girth
- (2) biomass
- (3) number of annual rings
- (4) none of these

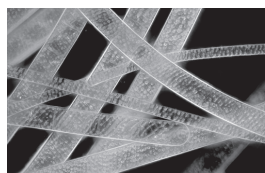
42. From the given images, find the spirogyra:



A



B



C

- (1) A
- (2) B
- (3) C
- (4) None of these

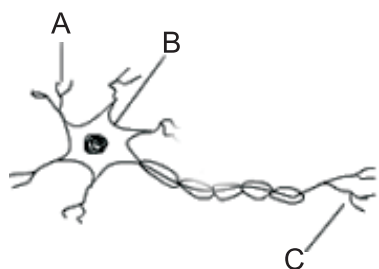
43. Who discovered cell first time by observing cork?

- (1) Alexander Fleming
- (2) Robert Hooke
- (3) Leeuwenhoek
- (4) None of these

44. Which vitamin deficiency causes cracking of lips at the corners of a human patient?

- (1) Vitamin A
- (2) Vitamin B-2
- (3) Vitamin C
- (4) None of these

45. Identify the parts 'A', 'B' and 'C' of the human nerve cell.



- (1) A = Cyton, B = Dendrite, C = Axon
- (2) A = Dendrite, B = Axon, C = Cyton
- (3) A = Dendrite, B = Cyton, C = Axon
- (4) None of these

46. How many lungs does the human body have?

- (1) 3
- (2) 2
- (3) 4
- (4) None of these

47. The area of biology devoted to the study of fungi is known as

- (1) Mycology
- (2) Astrology
- (3) Mythology
- (4) None of these

48. How many legs does a spider have?

- (1) 8
- (2) 10
- (3) 12
- (4) None of these

49. The crocodile species is believed to have been around for how long?

- (1) 2 million years
- (2) 20 million years
- (3) 200 million years
- (4) None of these

50. Which of the following statements is correct?

- I. In plant cell, vacuole is very large as compared to animal cell.
- II. In animal cell and plant cell, vacuole is of same size.
- III. In plant cell, vacuole is smaller as compared to animal cell.

- (1) I
- (2) II
- (3) III
- (4) None of these



**END OF THE EXAM**