

# GENERAL KNOWLEDGE

1. Birds are different from insects because birds have

(1) Feathers



(2) Feet



(3) Wings



(4) None of these

2. Plants reproduce through

(1) Eggs

(2) Seeds

(3) Roots

(4) Leaves

3. Where does air go when a person breathe in?

(1) Into the stomach

(2) Into the lungs

(3) Into the heart

(4) None of these

4. Water freezes at

(1) 10°C

(2) 1000°C

(3) 100°C

(4) 0°C

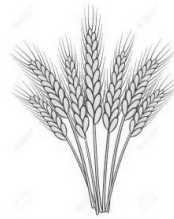
5. Animals depend on plants and other animals for their food so they are called:

(1) Autotrops                      (2) Heterotrops

(3) Both (1) and (2)              (4) Producers

6. Which of the following are the examples of rabi crops?

(1) Wheat



(2) Barley



(3) Oats



(4) All of above

7. Diseases which are caused by microorganisms are called

(1) Contagious

(2) Venereal

(3) Infectious

(4) Incurable

8. The industrial organization of Atomic Minerals Division, Heavy Water Board (HWB) is located at

(1) Mumbai

(2) Kolkata

(3) Hyderabad

(4) Delhi

9. Animals which are active during the day time are called

(1) Diurnal

(2) Nocturnal

(3) Both (1) and (2)

(4) None of these

10. The main crop of Meghalaya is

(1) Rice

(2) Wheat

(3) Barley

(4) Sugarcane

11. Production of chlorofluorocarbons (CFC) gas is proposed to be banned in India, is used in which of the following domestic products?

- (1) Television
- (2) Refrigerator
- (3) Tube light
- (4) Cooking gas

12. Balloons are filled with \_\_\_\_\_ gas.

- (1) nitrogen
- (2) helium
- (3) oxygen
- (4) argon

13. Summer crops are called

- (1) Kharif crops.
- (2) Edible crops.
- (3) Rabi crops.
- (4) Seed crops.

14. Which metal pollute the air of big cities?

- (1) Copper
- (2) Chromium
- (3) Lead
- (4) Cadmium

15. Which are the foods that are rich in vitamins?

(1)  Broccoli

(2)  Papaya

(3)  Citrus fruits

(4) All of above

16. We should drink atleast \_\_\_\_\_ of water every day.

- (1) 2 liters
- (2) 0 – 1 liters
- (3) 3 – 4 liters
- (4) 4 – 7 liters



17. What are the safety precautions to be followed by all of us to avoid accidents on roads?

- (1) Drink alcohol before driving.
- (2) Always use back view mirrors when ever overtaking another vehicle.
- (3) Don't practice to give signals before turning or reversing.
- (4) All of above

18. Our taste buds can feel different types of taste such as:

- (1) Sweet
- (2) Sour
- (3) Bitter
- (4) All of above

19. Just like animals and humans, plants also need food for their survival.

- (1) True
- (2) False
- (3) Don't know
- (4) None of above

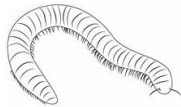
20. The feet of ducks are used for:

- (1) Walking
- (2) Swimming
- (3) Both (1) and (2)
- (4) Running

21. Which of the following animals breathe only through the skin?

(1)  Lion

(2)  Frog

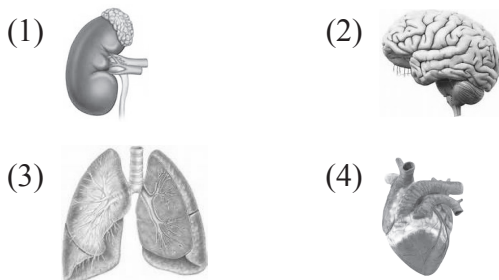
(3)  Earthworm

(4) None of above

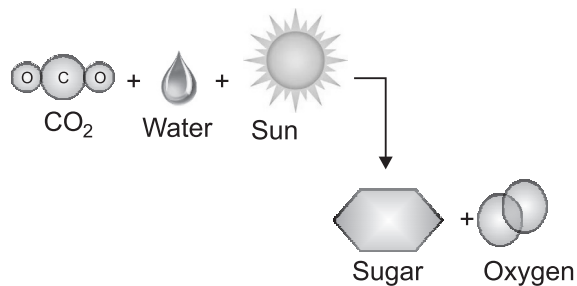
22. For cuts and minor wounds the following treatment is not good.

- (1) Clean the wounded area
- (2) Apply antiseptic with sterile cotton
- (3) Wash it with cold water
- (4) All of these

23. Excretion of wastes and toxins takes place through \_\_\_\_\_ in our body.



24. What the following image reaction represents?



- (1) Respiration
- (2) Photosynthesis
- (3) Evaporation
- (4) Condensation

25. The spinal cord is protected by

- (1) Ribcage
- (2) Skull
- (3) Vertebral column
- (4) All of these

## INTERACTIVE SECTION

26. Which of these are waterborne diseases?

- (1) Tuberculosis
- (2) Dysentery
- (3) Jaundice
- (4) All of above

27. Which of the following dissolves in water?

- (1) Jaggery
- (2) Sand
- (3) Wood
- (4) An eraser

28. What does a mosquito do when it bites us?

- (1) It pinches us
- (2) It bites off a piece of flesh
- (3) It tickles us
- (4) It sucks blood from our body

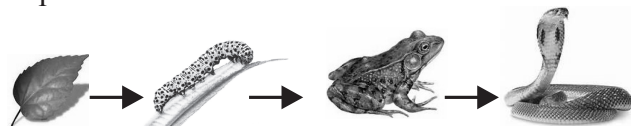
29. Soil helps trees because soil

- (1) Makes food for the trees.
- (2) Moves the tree seeds to new places.
- (3) Gives nutrients to the trees.
- (4) Turn the roots into new trees.

30. Malaria is caused by

- (1) Cockroach
- (2) Anopheles mosquito
- (3) Housefly
- (4) Bees

31. In the food chain given below, which organism is the producer?

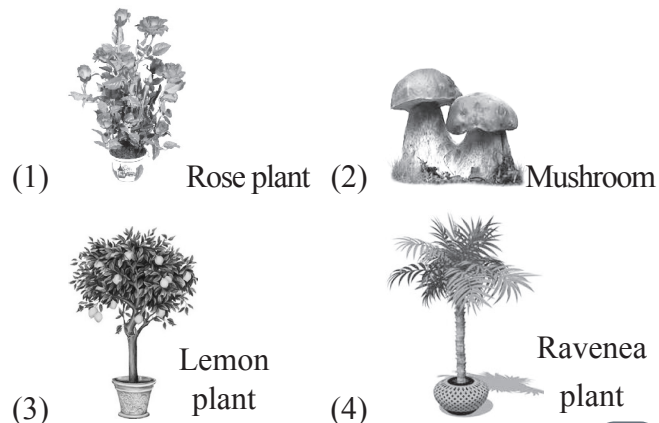


- (1) Snake
- (2) Leaf
- (3) Frog
- (4) Caterpillar

32. A matter is made up of tiny particles called as \_\_\_\_\_.

- (1) Atoms
- (2) Molecules
- (3) Compounds
- (4) All of these

33. Which of these will not come under plant category?



34. Which of these is not grown from seeds?

- (1) Rose
- (2) Pea
- (3) Brinjal
- (4) Mustard

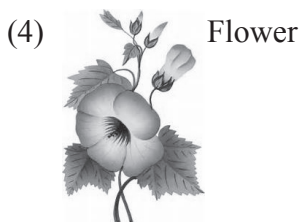
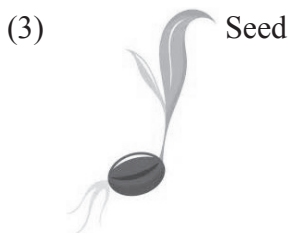
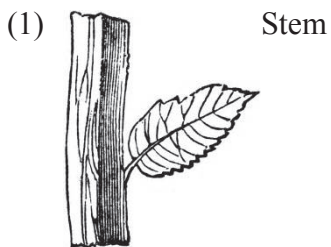
35. Which condition is not required for germination of seed?

- (1) Sunlight
- (2) Air
- (3) Water
- (4) Suitable temperature

36. What is the process of preservation of milk?

- (1) pasteurization
- (2) salting
- (3) pickling
- (4) canning

37. Which part of the plant stores food for its growing embryo?



38. Bryophyllum plant reproduce through its .....

- (1) Roots
- (2) Leaves
- (3) Flowers
- (4) Seeds

39. A small baby plant coming out of a seed is



- (1) Grain
- (2) Root
- (3) Dispersal
- (4) Seedling

40. The substance that makes plant green is known as

- (1) Water
- (2) Chlorophyll
- (3) Carbon dioxide
- (4) Calcium



**END OF THE EXAM**