

GENERAL KNOWLEDGE

1. Adalaj Vav, the finest stepwell is in _____.

- (1) Gujarat
- (2) Assam
- (3) Jharkhand
- (4) Uttar Pradesh

2. Where did Al-Biruni come from _____.

- (1) Pakistan
- (2) Uzbekistan
- (3) Afghanistan
- (4) Japan

3. Which is the saltiest sea of the world?

- (1) Red sea
- (2) Arabian sea
- (3) Dead sea
- (4) All of these

4. How do mosquitoes locate human beings to bite?



- (1) They have sharp eyes
- (2) They locate human beings through heat
- (3) They use sound to locate them
- (4) They use their sense of smell

5. The process by which jute fibre is obtained from the bark of jute plant is called

- (1) Spinning
- (2) Combing
- (3) Retting
- (4) All of these

6. Entomology is the science that studies

- (1) Behaviour of human beings
- (2) Insects
- (3) The origin and history of technical and scientific terms
- (4) The formation of rocks

7. Eritrea, which became the 182nd member of the UN in 1993, is in the continent of

- (1) Asia
- (2) Africa
- (3) Europe
- (4) Australia

8. Garampani sanctuary is located at

- (1) Junagarh, Gujarat
- (2) Diphu, Assam
- (3) Kohima, Nagaland
- (4) Gangtok, Sikkim

9. The tree sends down roots from its branches to the soil is

- (1) Oak
- (2) Pine
- (3) Banyan
- (4) Palm

10. Electric bulb filament is made of



- (1) Copper
- (2) Aluminium
- (3) Lead
- (4) Tungsten

11. Brass gets discoloured in air because of the presence of which of the following gases in air?

- (1) Oxygen (2) Hydrogen sulphide
(3) Carbon dioxide (4) Nitrogen

12. Which of the following is a non metal that remains liquid at room temperature?

- (1) Phosphorous (2) Bromine
(3) Chlorine (4) Helium

13. Chlorophyll is a naturally occurring chelate compound in which central metal is

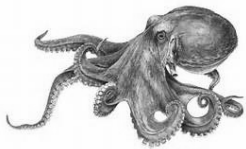
- (1) Copper (2) Magnesium
(3) Iron (4) Calcium

14. Water suitable for drinking is known as

- (1) Distilled water (2) Chlorinated water
(3) Potable water (4) All of these

15. Which of the following animals make different sounds to give messages?

- (1)  Octopus



- (2)  Shark



- (3)  Dolphin



- (4)  Starfish



16. Sloth bear spends almost _____ in a day sleeping while hanging upside down on a tree.

- (1) 16 hours
(2) 17 hours
(3) 18 hours
(4) 19 hours

17. Tigers mark their area with their _____

- (1) Urine
(2) Faeces
(3) Both urine and faeces
(4) All of these

18. Rhinoceros are killed for their _____







- (1) skin
(2) horns
(3) teeth
(4) eyes

19. The tongue is a sense organ that helps us to recognize _____

- (1) smell
(2) feel
(3) taste
(4) hear

20. Most of the fat digestion occurs in

- (1)  rectum (2)  stomach
(3)  duodenum (4)  small intestine

21. Deficiency of Vitamin C causes

- (1) beri - beri
- (2) scurvy
- (3) goiter
- (4) all of these

22. When we burn wool it produces smell of

- (1) Burning fibres
- (2) Burning hair
- (3) Burning fuel
- (4) All of these

23. The male reproductive part of a plant is

- (1) Stamen
- (2) Anther

(3) Ovary

(4) all of these

24. Compared to temperature, more oxygen is present in

- (1) clean water
- (2) hot water
- (3) cool water
- (4) dilute water

25. Prey is an organism that is eaten by its

- (1) Predator
- (2) Animal
- (3) Organism
- (4) Plant

INTERACTIVE SECTION

26. Deserts generally have soil with humus in

- (1) average quantity
- (2) low quantity
- (3) abundant quantity
- (4) shape

27. Lichens are a mutualism formed between fungi and various groups of

(1) amoeba



(2) lichens



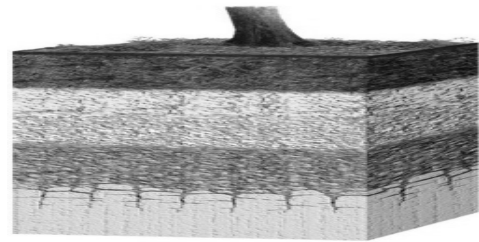
(3) fungi



(4) algae



28. Depending on soil properties, more or less nutrients or water become available to



- (1) trees
- (2) land
- (3) air
- (4) mountains

29. Temperature changes on earth are caused due to

- (1) climate
- (2) slope
- (3) wind
- (4) direction

30. Rhododendrons, heathers, pineapple, cotton and tea plants grow well in

- (1) alkaline soil
- (2) acidic soil
- (3) rough soil
- (4) neutral soil

31. Soil moisture, sunlight are some examples that are known as

- (1) chemical factors
- (2) physical factors
- (3) salient factors
- (4) all of these

32. A relationship that benefits both organisms is known as

- (1) parasitism
- (2) mutualism
- (3) predation
- (4) all of these

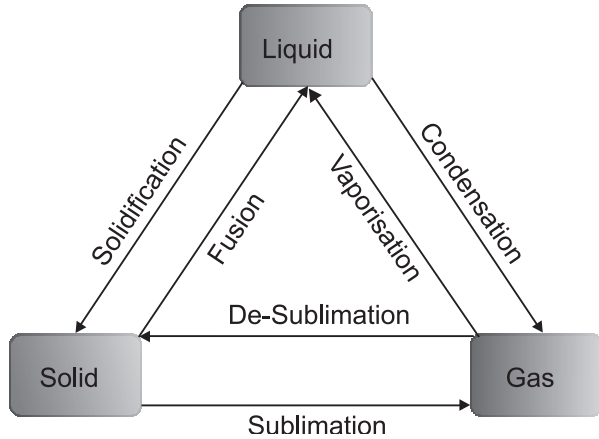
33. Example of abiotic components in nature is/are

- (1) precipitation
- (2) sunlight
- (3) minerals
- (4) all of them

34. A salt which absorbs water is called

- (1) Hygroscopic salt
- (2) Hydrophobic salt
- (3) Hydrophilic salt
- (4) All of these

35. The process of settling down of particles of a solid in a liquid is known as



- (1) sublimation
- (2) sedimentation
- (3) decantation
- (4) precipitation

36. Which of the following method used to separate two immiscible liquids?

- (1) Separating funnel
- (2) Sieving
- (3) Winnowing
- (4) Sublimation

37. Which of the following is a biodegradable wastes?

(1)  Glass

(2)  Paper

(3)  Chemical Fertilizer

(4)  Aluminium Foil

38. Generally, it takes _____ to decompose solid waste in a landfill.

- (1) 20 days
- (2) 20 weeks
- (3) 20 months
- (4) 20 years

39. A weather cock shows the direction in which the water is flowing.



- (1) True
- (2) False
- (3) Can't Say
- (4) None of these

40. Deficiency of Vitamin B-1 leads to _____

- (1) Beri Beri
- (2) Energy
- (3) Goitre
- (4) All of these



END OF THE EXAM