



(3)

(4)

3. Look at this pattern:



Which pattern matches?



4. One hundred and fifty two is written in numbers as :

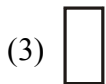
(1) 125

(2) 152

(3) 151

(4) 521

5. Which figure has the largest number among these.



(4) None of these

## MATHEMATICS

6. I have 15 marbles in my pocket. If I add 5 more marbles in my pocket then how many marbles will I have ?

(1) 10

(2) 15

(3) 20

(4) None of these

7. 76 people are waiting in a line at the airport. 20 more join them. How many peoples are there in all ?

(1) 96

(2) 69

(3) 59

(4) 86

Match the following and answer the questions

1. $1 + 1 + 1$	(a) 8
2. $18 + 0$	(b) 10
3. $19 + 1$	(c) 4
4. $5 + 5$	(d) 9
5. $7 + 1$	(e) 3
6. $9 + 0$	(f) 20
7. $2 + 2$	(g) 18

8.  $1 + 1 + 1$

(1) 1 - e

(2) 1 - b

(3) 1 - f

(4) 1 - g

9.  $2 + 2$

(1) 7 - c

(2) 7 - a

(3) 7 - b

(4) 7 - e

10.  $19 + 1$

(1) 3 - a

(2) 3 - f

(3) 3 - b

(4) 3 - g

11. There are 84 sweets in a tray, 24 sweets are picked. How many sweets are left ?

(1) 60

(2) 50

(3) 24

(4) 108

12. 63 people are at the coffee shop. 11 are children. How many people are not children?

(1) 72

(2) 74

(3) 52

(4) 25

13. If 1 candy bar cost 10 paise, estimate the number of candy bars, you could buy with 50 paise

(1) 5

(2) 10

(3) 15

(4) 20

14. 35 people arrive on one flight. 42 people arrive on another flight. How many people arrive all together?

(1) 77

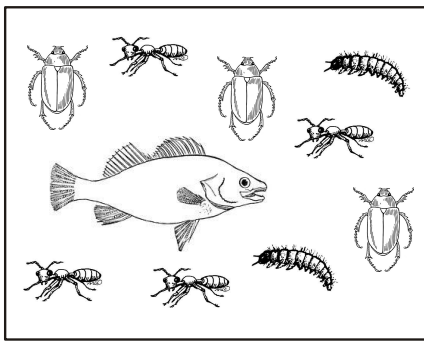
(2) 67

(3) 57

(4) 47

15. Priti had 96 toffees. She gave away 36 toffees. How many toffees are now left with her ?
- (1) 126                      (2) 132  
(3) 60                        (4) 61
16. There are total 27 red and blue boats. 13 boats are red. How many boats are blue ?
- (1) 11                        (2) 12  
(3) 13                        (4) 14
17. How many eggs are in a dozen ?
- (1) 10                        (2) 20  
(3) 12                        (4) 14

Observe the given figures carefully and answer the questions



18. Which graph correctly represents the contents of the rectangle above

(1) 

			X
		X	X
X		X	X
X	X	X	X

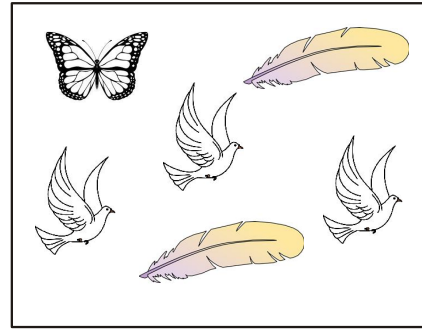
 (2) 

			X
		X	X
X	X	X	X
X	X	X	X

(3) 

			X
X		X	X
X	X	X	X

 (4) None of these



19. Which graph correctly represents the contents of the rectangle above

(1) 

		X
X		X
X	X	X

 (2) 

		X
	X	X
X	X	X

(3) 

	X	
	X	X
X	X	X

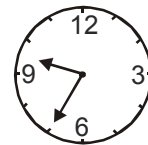
 (4) none of these

20. Rosy walked 6 blocks to the library. Than she walked 6 block to right back at home. How many blocks did she walk in all ?

- (1) 11                        (2) 12  
(3) 13                        (4) 14

**ETG INTERACTIVE SECTION**

21. The given clock is showing what time?



- (1) 9 : 30                      (2) 9 : 35  
(3) 9 : 40                      (4) 9 : 45

22. What number will come next in the pattern ?

3, 5, 7, 9, 11, 13.....

- (1) 15                      (2) 14  
(3) 13                      (4) 17

23. 4kg = ?

- (1) 4000g                  (2) 4500g  
(3) 3000g                  (4) 3500g

24. Which sign in  $\square$  makes the sentence true?

$$65 + 5 \square 70$$

- (1) =                      (2) <  
(3) >                      (4) None of these

25. Which of the following is correctly matched

- (a)  $3 \times 9 = 27$                   (b)  $9 \times 4 = 36$   
(c)  $2 \times 2 = 8$                       (d)  $5 \times 6 = 28$

- (1) Only (a)  
(2) both (a) & (b)  
(3) Both (a) (b) & (c)  
(4) None of these



**END OF THE EXAM**