



# EDUHEAL FOUNDATION



## INTERACTIVE OLYMPIADS

EDUHEAL FOUNDATION CONDUCTS 6 OLYMPIADS ANNUALLY REACHING OUT TO 3,500 + SCHOOLS  
• 4 LAKH + STUDENTS • 50,000 COORDINATING TEACHERS AND HAVING 500 RESOURCE PERSONS  
IN ENGLISH / MATHS / SCIENCE / BIOTECH / COMPUTER / G.K. & 300 REGIONAL COORDINATORS.

WEBSITE : [WWW.EDUHEALFOUNDATION.ORG](http://WWW.EDUHEALFOUNDATION.ORG) • E-MAIL : [EDUHEALFOUNDATION@GMAIL.COM](mailto:EDUHEALFOUNDATION@GMAIL.COM)

<b>IGO</b> INTERNATIONAL CYBER OLYMPIAD	<b>NISO</b> NATIONAL INTERACTIVE SCIENCE OLYMPIAD	<b>NIMO</b> NATIONAL INTERACTIVE MATHS OLYMPIAD	<b>NBTO</b> NATIONAL BIOTECHNOLOGY OLYMPIAD	<b>IEO</b> INTERNATIONAL ENGLISH OLYMPIAD	<b>IGO</b> INTERNATIONAL G.K. OLYMPIAD
---	---	---	--	---	--

Academic Partner [WWW.EDUSYS.IN](http://WWW.EDUSYS.IN)

Creating SUCCESS Stories

A Unit of EDUSYS LEARNING MEDIA

AIEEE • IIT • PMT • OLYMPIADS

**NATIONAL INTERACTIVE SCIENCE OLYMPIAD**

**NISO**

**5** Class

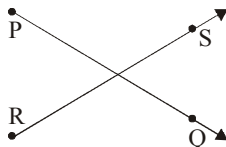
**B1** Paper Code

### IMPORTANT INFORMATION

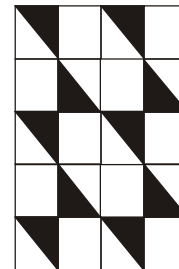
- You are allowed additional 10 minutes to fill the required details in the **RESPONSE SHEET**.
- The question paper is made as per syllabus guidelines & pattern given in the information Booklet. The Question Paper for Classes 1 to 6 contains 25 Questions each to be answered in 40 minutes. The Question paper for classes 7 to 12 contains 50 Questions each to be answered in 60 minutes. All questions are compulsory. Further instructions are given in the instruction letter to the coordinator teacher.
- Use the response sheet to mark your responses by darkening the required circle. The response sheet has to be returned to the foundation, duly filled in. The student can retain the Question Paper.

### GENERAL I. Q.

- Which of the following statements is correct with respect to the given figure?



- $\vec{PQ}$  and  $\vec{RS}$  are intersecting rays
  - $\overline{PQ}$  and  $\overline{RS}$  are line segments
  - $\overleftrightarrow{PQ}$  and  $\overleftrightarrow{RS}$  are parallel lines
  - None of these
- Three bells start ringing together at 8 : 35 a.m. If they ring after 12, 15 and 18 seconds respectively each time, the next time they will toll together at :
  - 8 : 38 a.m.
  - 8 : 40 a.m.
  - 8 : 42 a.m.
  - None of these
- Niki knits a blanket. She uses 2 colours and follows the pattern as shown below.



The fraction of the blanket knitted in the darker shade is,

- $\frac{1}{2}$
  - $\frac{1}{8}$
  - $\frac{1}{4}$
  - None of these
- The math teacher gave four blocks to four children to test the divisibility as shown below

990	425	780	126
Krish	Pooja	Hunny	Babli

Who is the luckiest one having numbers divisible by 2, 3, 5 and 9 all?

- (1) Pooja (2) Hunny  
(3) Krish (4) None of these
5. How many rectangular plots of dimensions 40 m by 60 m can be made from a rectangular field of dimensions 120 m by 160 m?  
(1) 2 (2) 3  
(3) 8 (4) None of these

### GENERAL SCIENCE

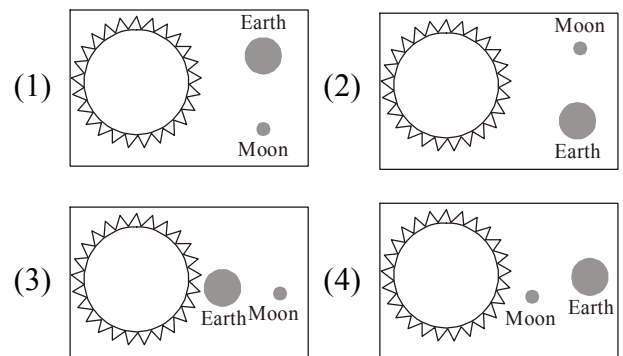
6. Which of the following methods is used to separate seed of rice from stalks?  
(1) Sieving (2) Threshing  
(3) Winnowing (4) None of these
7. The invention of \_\_\_\_\_ revolutionized the transportation.  
(1) Bullock car (2) Car  
(3) Wheel (4) None of these
8. Barometer is used to measure  
(1) Water pressure (2) Air pressure  
(3) Speed of water flow (4) None of these
9. A human heart beats approximately  
(1) 56 times in a minute (2) 100 times in a minute  
(3) 72 times in a minute (4) None of these
10. When do you use blow from mouth to help fire to burn  
(1) While burning candle  
(2) While burning matchstick  
(3) While burning chulah (earthen stove)  
(4) None of these
11. Oxygen carrier pigment in our blood is called  
(1) Chlorophyll (2) Haemoglobin  
(3) Cyanoglobin (4) None of these
12. Which of the following organs help the elephants in maintaining its body temperature?  
(1) legs (2) trunk  
(3) ears (4) None of these
13. The hardest layer of a tooth is  
(1) enamel (2) dentine  
(3) pulp (4) None of these
14. The process of seeping of water into the ground is called  
(1) evaporation (2) infiltration  
(3) condensation (4) none of these
15. If we take water, body lotion, kerosene & jelly on a

sliding surface, which of the following will slide the fastest? Is density of the substance the reason for your answer?

- (1) water, yes (2) body lotion, No  
(3) kerosene, yes (4) none of these
16. The organisms which can prepare its own food is called  
(1) heterotroph (2) autotroph  
(3) herbivore (4) None of these
17. A person who study life under water are called  
(1) astronauts (2) divers  
(3) aquanauts (4) None of these
18. The cities which receives heavy rain fall has houses having  
(1) circular roofts (2) sloping roofs  
(3) spherical roofs (4) None of these
19. Which of the following group of plants grows from stem cutting  
(1) Potatoes, ginger, groundnut  
(2) Rose, Sugarcane, hibiscus  
(3) Potatoes, Rose, Wheat  
(4) None of these
20. Match the plants  
1. Wheat A Rabi  
2. Maize B Kharif  
3. Bajra  
4. Gram  
(1) 1-B 2-B 3-A 4-A (2) 1-A 2-B 3-A 4-B  
(3) 1-A 2-B 3-B 4-A (4) None of these

### ETG INTERACTIVE SECTION

21. Which diagram shows the Earth-Moon-Sun system arranged to cause a total solar eclipse?

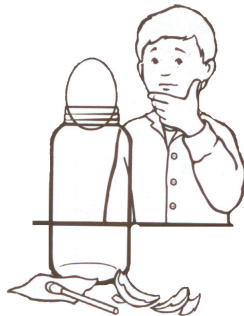


22. What do you think will happen when you turn over a glass of water topped with cardboard and then let go of the cardboard?



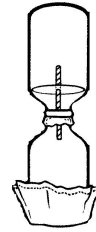
- (1) The water will spill all over
- (2) The water will sprinkle out slowly.
- (3) The cardboard will stick to the cup and hold the water in
- (4) None of these

23. What do you think will happen to the hard-boiled egg when it is placed on top of a bottle that has a burning piece of paper inside it?  
The egg will \_\_\_\_\_.



- (1) begin to burn
- (2) pop off
- (3) be sucked into the bottle
- (4) None of these

24. What do you think will happen when the cold rag is placed on the empty bottle inverted on top of the bottle of colored water?



- (1) start to bubble
- (2) move up through the straw
- (3) change color
- (4) None of these

25. What do you think will happen to a paper cup of water when it is held over an open flame?  
The cup of water will \_\_\_\_\_.

- (1) catch fire
- (2) start to boil
- (3) put the candle out
- (4) None of these



**END OF THE EXAM**

# ROUGH PAGE