



EDUHEAL FOUNDATION

INTERACTIVE OLYMPIADS

EDUHEAL FOUNDATION CONDUCTS 8 OLYMPIADS ANNUALLY REACHING OUT TO 3,500 + SCHOOLS
• 4 LAKH + STUDENTS • 50,000 COORDINATING TEACHERS AND HAVING 500 RESOURCE PERSONS
IN ENGLISH / MATHS / SCIENCE / BIOTECH / COMPUTER / G.K. / ARTS / CRICKET & 300 REGIONAL COORDINATORS.

WEBSITE : WWW.EDUHEALFOUNDATION.ORG • E-MAIL : EDUHEALFOUNDATION@GMAIL.COM

ICO INTERNATIONAL CYBER OLYMPIAD	NISO NATIONAL INTERACTIVE SCIENCE OLYMPIAD	NIMO NATIONAL INTERACTIVE MATHS OLYMPIAD	NBTO NATIONAL BIOTECHNOLOGY OLYMPIAD	IEO INTERNATIONAL ENGLISH OLYMPIAD	IGO INTERNATIONAL G.K. OLYMPIAD
---	---	---	--	---	--

Level - 1 : Level-1 winners will get certificate, aptitude report, medals for the school toppers and online subscription.

Level - 2 : Top 10 % including school toppers will be selected for level-2-National level - online computer based interactive test held at exam centres all over India. Besides selection for level-3, winner will get merit certificate, aptitude report, medals, Mp3 player, watches, educational CDs, laptop, scholarship, online subscription etc.

Level - 3 : Top 1% will qualify for level 3-International level-where you will compete with students globally. Get selected for EHF's International Olympiad training camp. Only Indian organization giving students exposure to global competitions. Represent India & win laurels. Guidance by top scientists.

Prizes ranges from cash (millions of \$), gadgets, foreign trips, publicity, fame, scholarships, Internships, conference participation and more.

- You are allowed additional 10 minutes to fill the required details in the **RESPONSE SHEET**.
- The question paper is made as per syllabus guidelines & pattern given in the information Booklet. The Question Paper for Classes 1 to 6 contains 25 Questions each to be answered in 40 minutes. The Question paper for classes 7 to 12 contains 50 Questions each to be answered in 60 minutes. All questions are compulsory. Further instructions are given in the instruction letter to the coordinator teacher.
- Use the response sheet to mark your responses by darkening the required circle. The response sheet has to be returned to the foundation, duly filled in. The student can retain the Question Paper.

**NATIONAL
INTERACTIVE
SCIENCE
OLYMPIAD**

N I S O

6
Class

A1
Paper
Code

LEVEL - 1

Academic Partner — WWW.EDUSYS.IN

Creating **SUCCESS** Stories

A UNIT OF EDUSYS LEARNING MEDIA

AISSE • IIT • PMT • OLYMPIADS

INTERNATIONAL SCIENCE AND ENGINEERING FAIR

Google Science Fair

THE HARVARD-MIT MATHEMATICS TOURNAMENT

ORACLE ThinkQuest EDUCATION FOUNDATION

GENERAL IQ

- Water is to glass as letter is to
 - Mail
 - Envelope
 - Stamp
 - None of these
- If you rearrange the letter "ANLDEGN", you would have the name of a
 - Country
 - Cricket player
 - State
 - None of these
- In a certain language GOLDFISH is coded as 49654312 and GOOD as 4995. How is the word SOLID coded in that language?
 - 19536
 - 19635
 - 16953
 - None of these

- Which choice makes the best comparison?
LIVED is to DEVIL as 6323 is to
 - 2636
 - 3623
 - 3236
 - None of these
- Shruti is taller than Shreya. Shilpa is taller than Shruti. Sheela is taller than Shilpa. Therefore who is the shortest of the 4.
 - Shruti
 - Shreya
 - Shilpa
 - None of these

GENERAL SCIENCE

- Which of the following is given the name 'Black Gold' ?
 - Coal
 - Natural gas
 - Petroleum
 - None of these

7. The heart beat of a man was found to be 102 times in a minute. What had he done?
- (1) Exercise (2) Eaten food
(3) Saw TV (4) None of these
8. Which of the following regarding moon is false?
- (1) The gravity on moon is $\frac{1}{6}$ of the earth's gravity.
(2) The moon makes a complete orbit around the earth in 365 days.
(3) Moon is the only celestial body on which humans have set foot.
(4) None of these
9. Electric switches are able to break the electrical circuits because
- (1) They form a gap between the terminals of the bulb and the cell.
(2) Air in the gap does not allow the current to pass through it.
(3) Both 1 and 2
(4) None of these
10. Which of the following is an example for a chemical change but not a physical change?
- (1) Freezing of water into ice
(2) An half eaten apple that turns brown
(3) Cutting of woods
(4) None of these
11. Ships made of steel do not sink. This is because
- (1) Steel is less dense than water and therefore it floats.
(2) The ship's engine creates an upward force that reduces the weight of the ship
(3) The weight of the ship is balanced by an upward buoyancy force.
(4) None of these
12. The process of mixing of saliva while chewing is called
- (1) Mastication (2) Pasteurization
(3) Peristalsis (4) None of these
13. Which is the set of deficiency diseases?
- (1) Malaria, Dengue, Kala-azar
(2) Cholera, Typhoid, Measles
(3) Scurvy, Night blindness, Rickets
(4) None of these

14. The shape of the moon changes every
- (1) Week (2) Day
(3) Month (4) None of these



15.

Which is the correct observation?

- (1) The mirror becomes hazy. This is because air in our blow contains water vapour which will condense on the mirror as its surface is colder than our inside body temperature.
(2) Air in our blow makes scratches on the mirror
(3) Air contains carbon dioxide which get stuck on the mirror
(4) None of these.
16. Government authorities have laid down guidelines for the use of plastics because
- (1) Plastic is non-decomposable
(2) Plastic is decomposable
(3) Manufacturing of plastic is expensive
(4) None of these.
17. Which of the following adaptations enable the camel to live in a desert?
- (1) It excretes small amount of urine.
(2) It stores fat in its hump.
(3) Both 1 and 2
(4) None of these
18. Translucent objects are those objects
- (1) Through which we can see clearly
(2) Through which we can see but not clearly
(3) Through which we cannot see
(4) None of these
19. Deepti immersed a cotton ball into a bowl of water. Bubbles appeared from cotton because
- (1) Cotton produced bubbles
(2) Water occupies the spaces in cotton, thereby releasing air.
(3) Water produces air in the presence of cotton
(4) None of these

20. What happens to the food when it reaches the stomach?
- (1) Food stays here for sometime and then reaches the duodenum
 - (2) Digestive juices mix with food and stomach muscles squeeze the food.
 - (3) The food gets stored in the stomach walls
 - (4) None of these

EtG INTERACTIVE SECTION

21. Take a plant and put it in a completely dark room for 2 days. After 2 days, pluck a leaf from the plant and heat till the green colour is lost. There after wash the leaf and carry out the iodine test. Which of the following statements regarding the results of the iodine test is correct?

- (1) It will give a blue-black colour with iodine.
- (2) It will not give a blue-black colour with iodine
- (3) It will give a positive iodine test
- (4) None of these

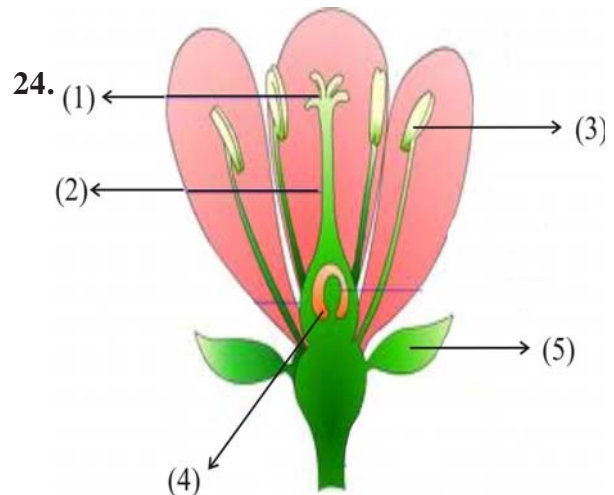
22. Match the following

- | | |
|-----------------|-------------|
| A. Lithosphere | - 1. Air |
| B. Hydrosphere | - 2. Ozone |
| C. Atmosphere | - 3. Land |
| D. Stratosphere | - 4. Water. |

- (1) A - 4, B - 2, C - 3, D - 1
- (2) A - 2, B - 1, C - 3, D - 4
- (3) A - 3, B - 4, C - 1, D - 2
- (4) None of these

23. Mohan had a list of objects with him which included a glass of water, wood, stone, eye glass lenses, diamond, etc. He is going to divide the objects according to their opacity. How is he going to do this?

- (1) Transparent objects – Glass of water, Diamond
 Translucent objects – Tissue paper
 Opaque objects – Wood, stone
- (2) Transparent objects – Wood, glass of water
 Translucent objects – Tissue paper
 Opaque objects – Diamond, stone
- (3) Transparent objects – Glass of water, Tissue paper
 Translucent objects – Wood
 Opaque objects – Diamond, stone
- (4) None of these



24.

Which is the correct labelling for the above flower?

- (1) 1 – Stigma, 2 – Ovary, 3 – Sepal, 4 – Stamen, 5 – Style
 - (2) 1 – Stigma, 2 – Style, 3 – Stamen, 4 – Ovary, 5 – Sepal
 - (3) 1 – Stamen, 2 – Stigma, 3 – Sepal, 4 – Ovary, 5 – Style
 - (4) None of these
25. Rohit is constructing a simple torch using 3 cells, a bulb and a piece of wire. He has to connect the 3 cells with each other. Terminals of the cells are marked '+' and '-' which of the following is a possible combination of cells?

(1) + - - + - +

(2) - + - + - +

(3) + + - + - -

- (4) None of these



END OF THE EXAM