



EDUHEAL FOUNDATION

EDUHEAL FOUNDATION CONDUCTS 8 OLYMPIADS ANNUALLY REACHING OUT TO 3,500 + SCHOOLS

• 5 LAKH + STUDENTS • 50,000 TEACHERS AND HAVING 500 RESOURCE PERSONS

IN ENGLISH / MATHS / SCIENCE / BIOTECH / COMPUTER / G.K. / ARTS / CRICKET / FINANCE & 300 REGIONAL COORDINATORS.

WEBSITE : WWW.EDUHEALFOUNDATION.ORG • E-MAIL : INFO@EDUHEALFOUNDATION.ORG

ICO INTERNATIONAL CYBER OLYMPIAD	NISO NATIONAL INTERACTIVE SCIENCE OLYMPIAD	NIMO NATIONAL INTERACTIVE MATHS OLYMPIAD	NBTO NATIONAL BIOTECHNOLOGY OLYMPIAD	IEO INTERNATIONAL ENGLISH OLYMPIAD	IGO INTERNATIONAL G.K. OLYMPIAD	BIFO BSE INTERNATIONAL FINANCE OLYMPIAD
---	---	---	--	---	--	--

Level - 1 : All Level-1 successful* participants will get certificate, aptitude report and online subscription, and school toppers will be eligible for school hero medals.

Level - 2 : School toppers* will be selected for level-2-National level - online computer based interactive test held at exam centres all over India. Besides selection for level-3, winner will get merit certificate, medals, educational CDs, laptop, scholarship and other prizes. There is no level 2 in G.K. and Biotech.

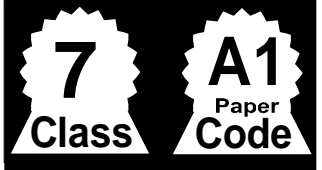
Level - 3 : Toppers will qualify# for level 3-International level-where you will compete with students globally. Get selected for EHF's International Olympiad training camp. Only Indian organization giving students exposure to global competitions. Represent India & win laurels. Guidance by top scientists. Prizes ranges from cash (millions of \$), gadgets, foreign trips, publicity, fame, scholarships, Internships, conference participation and more. Level 3 is in Maths, Science & Cyber only.

*# See prospectus/website for details.

- You are allowed additional 10 minutes to fill the required details in the **RESPONSE SHEET (OMR)**. **STUDENTS OF CLASS 1 & 2 HAVE TO UNDERLINE** THE CORRECT ANSWER IN THE QUESTION PAPER ITSELF. THEY ARE NOT REQUIRED TO USE THE RESPONSE SHEET (OMR). THEY HAVE TO FILL THEIR NAME, ROLL NUMBER, CLASS, SCHOOL NAME IN THE SPACE PROVIDED IN THE QUESTION PAPER.
- The question paper is made as per syllabus guidelines & pattern given in the information Booklet. The Question Paper for Classes 1 to 6 contains 25 Questions each to be answered in 40 minutes. The Question paper for classes 7 to 12 contains 50 Questions each to be answered in 60 minutes. All questions are compulsory. Further instructions are given in the instruction letter to the teacher.
- Use the response sheet to mark your responses by darkening the required circle. The response sheet has to be returned to the foundation, duly filled in. The student can retain the Question Paper except for classes 1 and 2.

**NATIONAL
INTERACTIVE
SCIENCE
OLYMPIAD**

N I S O

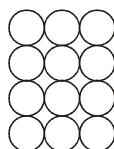


LEVEL - 1



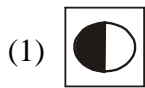
GENERAL IQ

- The day before yesterday is three days after Saturday. What day is today ?
(1) Friday (2) Sunday
(3) Tuesday (4) None of these
- What is the result of multiplying all figures from 0 to 25 ?
(1) 1 (2) 0
(3) 10 (4) None of these
- In the following figure if the centres of all the circles are joined by horizontal and vertical lines, then the number of squares that can be formed will be



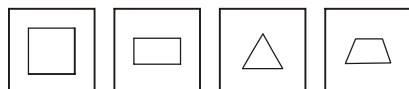
- (1) 6 (2) 7
(3) 8 (4) None of these
- If PALE is coded as 2134, EARTH is coded as 41590, how is PEARL coded in that language ?
(1) 29530 (2) 24153
(3) 25413 (4) None of these
- How many birthdays does an average man have ?
(1) 0 (2) 1
(3) 60 (4) None of these
- In a certain code, SUBSTITUTION is ITSBUSNOITUT. How is DISTRIBUTION written in that code?
(1) IRTSIDNOITUB (2) IRTSIDNOIBIT
(3) IRTDISNOITUB (4) None of these

7. Which figure will continue in the given series ?



(4) None of these

8. Find the odd one out



1

2

3

4

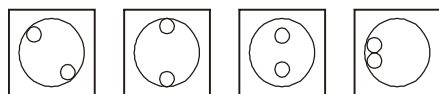
(1) 2

(2) 3

(3) 4

(4) None of these

9. Which figure will not match with the others in the given series ?



(1) 3

(2) 4

(3) 1

(4) None of these

10. Which is the missing letter in the given series ?

A, D, G, J, _____

(1) M

(2) N

(3) O

(4) None of these

GENERAL SCIENCE

11. Which is a protein deficiency disease ?

(1) Osteomalacia (2) Kwashiorkor

(3) Night Blindness (4) None of these

12. Jute is obtained from which part of the jute plant ?

(1) Leaves (2) Root

(3) Stem (4) None of these

13. A mixture formed by dissolving a material in some other substance is known as

(1) Solvent (2) Solute

(3) Solution (4) None of these

14. Which of the following methods is used to separate small number of stone from rice ?

(1) Handpicking (2) Winnowing

(3) Threshing (4) None of these

15. Which is a homogeneous mixture ?

(1) Pond water (2) Oil and water

(3) Air (4) None of these

16. On a hot summer day, ice-cream melts faster than in winters. This process of melting is a

(1) Chemical change (2) Physical change

(3) Periodic change (4) None of these

17. A plant which does not have distinct roots and stem is called

(1) Algae (2) Moss

(3) Both 1 and 2 (4) None of these

18. Muscles are attached to the bones with the help of

(1) Tendons (2) Ligaments

(3) Pivotal joints (4) None of these

19. Which gas is used by plants for photosynthesis?

(1) Oxygen (2) Carbondioxide

(3) Nitrogen (4) None of these

20. The movement of a player in a football ground is an example of

(1) Random motion. (2) Periodic motion.

(3) Oscillatory motion (4) None of these

21. Shadow is formed when light is made to fall on

(1) A transparent object.

(2) A translucent object

(3) An opaque object

(4) None of these

22. Match the following

A Fats a Milk, meat, pulses

B Vitamins b Potatoes, sweet potatoes

C Proteins c Vegetable oil, ghee, butter

D Carbohydrates d Fruits and vegetables

- (1) A-b, B-a, C-c, D-d
 (2) A-c, B-d, C-a, D-b
 (3) A-d, B-b, C-c, D-a
 (4) None of these
- 23.** The amount of water vapour in the air is called
 (1) Condensed air (2) Humidity
 (3) Hails (4) None of these
- 24.** A balanced diet contains
 (1) Proteins, carbohydrates and fats.
 (2) Minerals and vitamins
 (3) Roughage and water
 (4) None of these
- 25.** Which animal product is used in Ayurvedic medicines?
 (1) Egg (2) Butter
 (3) Honey (4) None of these
- 26.** 70% of our blood consists of
 (1) Proteins (2) Water
 (3) Fats (4) None of these
- 27.** Changes in our surroundings that makes us respond to them are called
 (1) Evolution (2) Acclimatization
 (3) Stimuli (4) None of these
- 28.** Which gas dissolves in rain water to form acid rain?
 (1) Sulphur dioxide (2) Carbon monoxide
 (3) Carbon dioxide (4) None of these
- 29.** Undesirable and unused materials are
 (1) Garbage (2) Sewage
 (3) Chemical (4) None of these
- 30.** Which of the following plant has a fibrous root system?
 (1) Banyan tree (2) Wheat plant
 (3) Water melon (4) None of these
- 31.** A substance which cannot be recycled by micro organisms is
 (1) Wood (2) Clothes
 (3) Plastic (4) None of these
- 32.** Which gas is used for making fertilizers?
 (1) Oxygen (2) Nitrogen
 (3) Carbon dioxide (4) None of these
- 33.** Oral Rehydration Salt solution is beneficial for anybody who has
 (1) Fever (2) Malaria
 (3) Diarrhoea (4) None of these
- 34.** Image is formed on which part of the eye?
 (1) Iris (2) Retina
 (3) Cornea (4) None of these
- 35.** Most of the pure drinkable water of the earth is in the form of
 (1) Icebergs (2) Springs
 (3) Ocean water (4) None of these
- 36.** A process that converts carbon dioxide into organic compounds using sunlight is called
 (1) Carbonation (2) Burning
 (3) Combustion (4) None of these
- 37.** Which of the following countries is closest to the equator?
 (1) Greenland (2) Australia
 (3) Sri Lanka (4) China
- 38.** Anaerobic respiration induced by micro-organisms. Name the process.
 (1) Fermentation (2) Combustion
 (3) Fragmentation (4) Nutrition
- 39.** The thinnest layer of the earth is
 (1) Crust (2) Landmass
 (3) Core (4) Mantle
- 40.** Who was the first women to go to space?
 (1) Sunita Chawla (2) Valentina Tereshkova
 (3) Kalpana Chawla (4) Sunita Williams



Put a few teaspoons of baking soda and a spoon of vinegar in a glass of water. Abundant amount of foam will be produced. Bubbles of gas produced in this reaction will be that of

- (1) Oxygen
- (2) Carbon dioxide
- (3) Hydrogen
- (4) None of these

42.



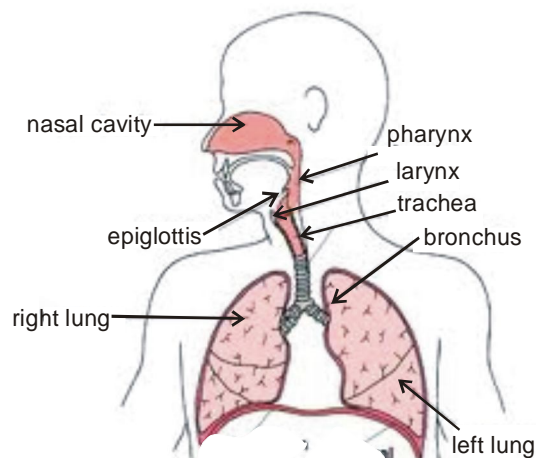
Take a balloon half filled with water. Hold it over the candle. What will happen to the balloon ?

- (1) Will explode splashing water every where.
- (2) Will absorb heat from the candle
- (3) Remains unchanged
- (4) None of these

43. Stainless steel is resistant to rusting, though it is made from iron. Why ?

- (1) Because it is steel
- (2) Because it is resistant to stains
- (3) Because it is made from iron, chromium, nickel and manganese
- (4) None of these

44.



Which part of the throat situated immediately inferior to the mouth and nasal cavity is important in vocalization ?

- (1) Pharynx
- (2) Larynx
- (3) Trachea
- (4) None of these

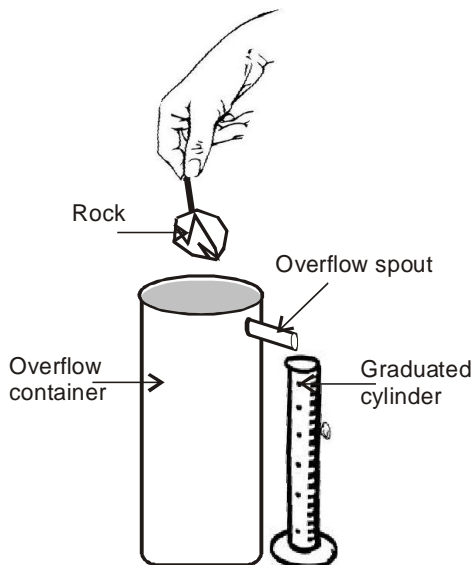
45. The distance-time graph is a straight line, it indicates that

- (1) The speed of object keeps on changing
- (2) The object is moving at constant speed
- (3) The object is at rest
- (4) None of these

46. In the late twentieth century as people became more concerned about protecting their environment, scientists researched better ways to

- (1) Recycle non-renewable resources.
- (2) Increase pesticide runoff into rivers.
- (3) Eliminate the use of renewable resources.
- (4) None of these

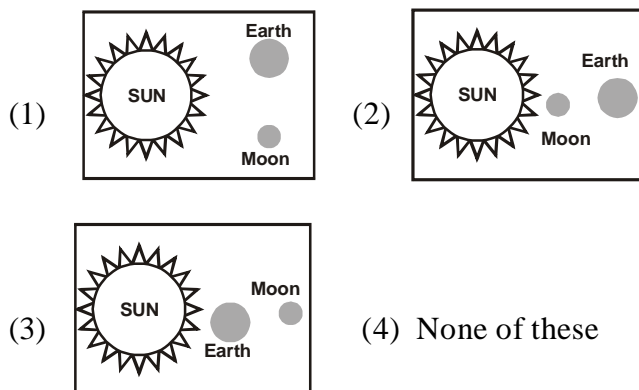
47. The diagram below shows a rock suspended above an overflow container filled with water up to the overflow spout. A graduated cylinder is positioned next to the container to collect water that comes out of the overflow spout.



Which property of the rock can be directly determined when the rock is placed in the overflow container ?

- (1) Mass
- (2) Volume
- (3) Density
- (4) None of these

48. Which diagram shows the Earth-Moon-Sun system arranged to cause a total solar eclipse ?



49. 'Tava' made up of iron when kept in moist air for a few days get coated with reddish brown powdery substance which is

- (1) Hydrated ferric bromide
- (2) Ferric oxide
- (3) Hydrated ferric oxide
- (4) None of these

50. Radha was testing a food item. She took the sample in a test tube and added iodine to it. On seeing the colour she inferred that the food item contains carbohydrate. What happened in the test tube?

- (1) The test tube became very hot to touch
- (2) The colour of solution in the test tube changed to blue-black
- (3) A foul smelling gas is released
- (4) None of these



END OF THE EXAM