



EDUHEAL FOUNDATION

EDUHEAL FOUNDATION CONDUCTS 8 OLYMPIADS ANNUALLY REACHING OUT TO 3,500 + SCHOOLS

• 5 LAKH + STUDENTS • 50,000 TEACHERS AND HAVING 500 RESOURCE PERSONS

IN ENGLISH / MATHS / SCIENCE / BIOTECH / COMPUTER / G.K. / ARTS / CRICKET / FINANCE & 300 REGIONAL COORDINATORS.

WEBSITE : WWW.EDUHEALFOUNDATION.ORG • E-MAIL : INFO@EDUHEALFOUNDATION.ORG

ICO INTERNATIONAL CYBER OLYMPIAD	NISO NATIONAL INTERACTIVE SCIENCE OLYMPIAD	NIMO NATIONAL INTERACTIVE MATHS OLYMPIAD	NBTO NATIONAL BIOTECHNOLOGY OLYMPIAD	IEO INTERNATIONAL ENGLISH OLYMPIAD	IGO INTERNATIONAL G.K. OLYMPIAD	BIFO BSE INTERNATIONAL FINANCE OLYMPIAD	NIPO NATIONAL IIT-PMT OLYMPIAD
---	---	---	---	---	--	--	---

Level - 1 : All Level-1 successful* participants will get certificate, aptitude report and online subscription, and school toppers will be eligible for school hero medals.

Level - 2 : School toppers* will be selected for level-2-National level - online computer based interactive test held at exam centres all over India. Besides selection for level-3, winner will get merit certificate, medals, educational CDs, laptop, scholarship and other prizes. There is no level 2 in Art, G.K. and Biotech.

Level - 3 : Toppers will qualify# for level 3-International level-where you will compete with students globally. Get selected for EHF's International Olympiad training camp. Only Indian organization giving students exposure to global competitions. Represent India & win laurels. Guidance by top scientists. Prizes ranges from cash (millions of \$), gadgets, foreign trips, publicity, fame, scholarships, Internships, conference participation and more. Level 3 is in Maths, Science & Cyber only.

See prospectus/website for details.

- You are allowed additional 10 minutes to fill the required details in the **RESPONSE SHEET (OMR)**. **STUDENTS OF CLASS 1 & 2 HAVE TO UNDERLINE** THE CORRECT ANSWER IN THE QUESTION PAPER ITSELF. THEY ARE NOT REQUIRED TO USE THE RESPONSE SHEET (OMR). THEY HAVE TO FILL THEIR NAME, ROLL NUMBER, CLASS, SCHOOL NAME IN THE SPACE PROVIDED IN THE QUESTION PAPER.
- The question paper is made as per syllabus guidelines & pattern given in the information Booklet. The Question Paper for Classes 1 to 6 contains 25 Questions each to be answered in 40 minutes. The Question paper for classes 7 to 12 contains 50 Questions each to be answered in 60 minutes. All questions are compulsory. Further instructions are given in the instruction letter to the teacher.
- Use the response sheet to mark your responses by darkening the required circle. The response sheet has to be returned to the foundation, duly filled in. **THE STUDENT CAN RETAIN THE QUESTION PAPER EXCEPT FOR CLASSES 1 AND 2.**

E H F
NATIONAL
INTERACTIVE
SCIENCE
OLYMPIAD

N I S O

8
Class

A1
Paper
Code

LEVEL - 1

Academic Partner — WWW.EDUSYS.IN

EtG
BOOKS

Creating
SUCCESS
Stories

A UNIT OF EDUSYS LEARNING MEDIA

AIEEE • IIT • PMT • OLYMPIADS

intel
INTERNATIONAL
SCIENCE
AND
ENGINEERING
FAIR

Google
Science
Fair

H
THE HARVARD - MIT MATHEMATICS TOURNAMENT

ORACLE ThinkQuest
EDUCATION FOUNDATION

GENERAL IQ

- The given table shows the bank transaction of Mr. D.H.R

Month	May	June	July
Deposit (`)	2x+y+z	x+2y+z	x+4z
With draws (`)	x-y-z	x-2y+3z	2x-3z

The balance of Mr. D.H.R. in the month of August is _____

- (1) $2(3y + 4z)$ (2) $3(2y + 3z)$

(3) $8x + 7z$ (4) None of these
- The degree of the product $(x-1)(x-2)(x-3) \dots \dots \dots (x-2013)$ is

(1) 1 (2) 2013

(3) $1 \times 2 \times 3 \dots \times 2013$ (4) None of these

- Raj has to type the numbers from 1 to 1000 on a type writer. How many times does he have to press the keys of the type writer?

- (1) 2800 (2) 2500
- (3) 2893 (4) None of these

- One pendulum ticks 57 times in 58 seconds and another 608 times in 609 seconds. If they started simultaneously then the time after which they will tick together is _____

- (1) 1 min. $4\frac{3}{19}$ sec (2) 1 min. $4\frac{2}{9}$ sec
- (3) 1 min. $3\frac{4}{9}$ sec (4) None of these

- 20.** Which acid is found in stomach?
 (1) H_3PO_4 (2) H_2SO_4
 (3) HCl (4) None of these
- 21.** Which of the following is not an example of a physical change?
 (1) Breaking of glass
 (2) Melting of gold
 (3) Cutting of wood
 (4) None of these
- 22.** Which of the following represents matter in a solid form?
 (1) $\text{CO}_2(\text{g})$ (2) $\text{H}_2\text{O}(\text{s})$
 (3) $\text{CCl}_4(\text{l})$ (4) None of these
- 23.** Which of the following correctly represents the process of sublimation?
 (1) $\text{CO}_2(\text{g}) \rightarrow \text{CO}_2(\text{s})$
 (2) $\text{CO}_2(\text{s}) \rightarrow \text{CO}_2(\text{g})$
 (3) $\text{CO}_2(\text{g}) \rightarrow \text{CO}_2(\text{l})$
 (4) None of these
- 24.** A balanced diet contains
 (1) Proteins, carbohydrates and fats.
 (2) Minerals and vitamins.
 (3) Roughage and water.
 (4) All of these
- 25.** Which of the following is not an element of weather?
 (1) Humidity (2) Temperature
 (3) Soil (4) None of these
- 26.** What effective safety measures should be followed during cyclones?
 (1) A cyclone forecast and warning service.
 (2) Rapid communication of warnings to the government agencies, the ports and to the general public.
 (3) Construction of cyclone shelters in the cyclone prone areas and administrative arrangements for moving people fast to safer places.
 (4) All of these
- 27.** Why does the smoke goes up ?
 (1) The warm air is heavier than the cold air
 (2) The warm air is lighter than the cold air
 (3) The cold air is lighter than the warm air
 (4) None of these
- 28.** Which of the following soil type is loosely packed with large air spaces?
 (1) Sandy soil (2) Clayey soil
 (3) Loamy soil (4) None of these
- 29.** Percolation rate of water is the least in _____
 (1) Sandy soil (2) Clayey soil
 (3) Loamy soil (4) None of these
- 30.** What is the percentage of oxygen in the inhaled air?
 (1) 21% (2) 16.4%
 (3) 18% (4) None of these
- 31.** What is the percentage of CO_2 in the exhaled air?
 (1) 23% (2) 4.4%
 (3) 6% (4) None of these
- 32.** The heart is located in the:
 (1) Thorax
 (2) Brain cavity
 (3) Neck cavity
 (4) None of these
- 33.** The function of the blood is to transport
 (1) The digested food from the small intestine to the other parts of the body.
 (2) The digested food from the parts of the body to the large intestine.
 (3) The digested food from the small intestine to the large intestine.
 (4) none of these
- 34.** The arteries have thick elastic walls because
 (1) Rapid blood flows at high pressure
 (2) Slow blood flows at low pressure
 (3) Rapid blood flows at low pressure
 (4) None of these

35. What are the advantages of vegetative propagation?

- (1) Plants produced by this method bear flowers earlier than the plants produced from seeds.
- (2) Daughter plants are identical copies of the parent plant
- (3) Seedless plants can be produced
- (4) All of these

36. Choose the ways by which seeds are dispersed

- (1) Wind and water
- (2) Animals
- (3) Bursting of fruit
- (4) All of these

37. A faster moving object covers:

- (1) Less distance in more time
- (2) More distance in shorter time
- (3) Less distance in shorter time
- (4) None of these

38. If an object moving along a straight line, keeps changing its speed then,

- (1) The motion is said to be a uniform motion
- (2) The motion is said to be a non uniform motion
- (3) The object is said to be stationary
- (4) None of these

39. An electric wire connected in a circuit gets heated up when current is allowed to flow through it. This is due to

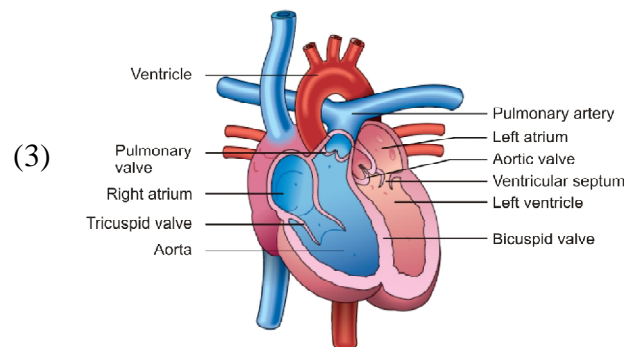
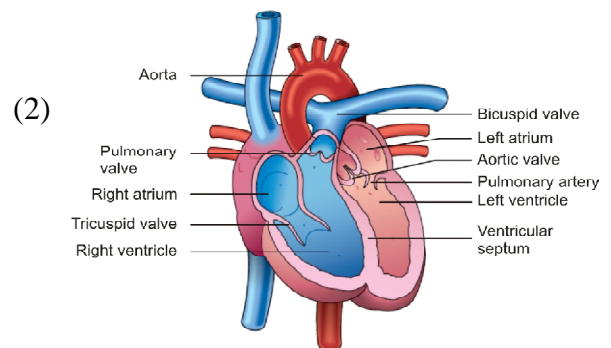
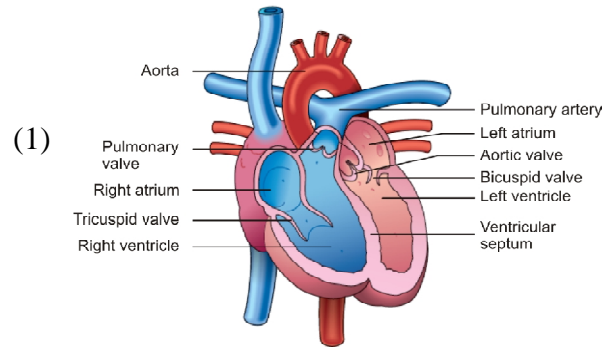
- (1) Heating effect of current
- (2) Electrical effect of current
- (3) Musical effect of current
- (4) None of these

40. A glowing filament will be

- (1) At a low temperature
- (2) At a high temperature
- (3) At atmospheric temperature
- (4) None of these

INTERACTIVE SECTION

41. Choose the correctly labelled diagram of the human heart:

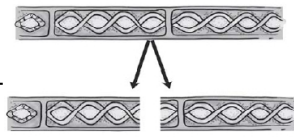
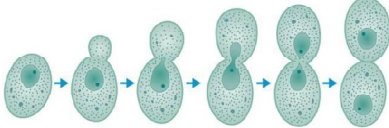



(4) None of these



42. Who discovered the circulation of blood?

- (1) William Harvey
- (2) Henry Cavendish
- (3) Sir Issac Newton
- (4) None of these

43. Choose the correctly labelled diagram:

- (1) Fragmentation - 
- (2) Budding - 
- (3) Budding - 
- (4) All are correct

44. Which among the following plant seeds are dispersed by animals?

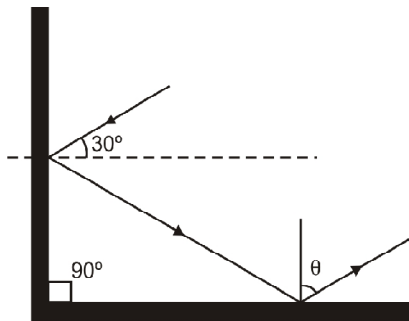
- (1)  (seed of drumstick)
- (2)  (seed of xanthium)
- (3) both (1) & (2) (4) none of these

45. One of the most notable differences between gamete formation in animals and gamete formation in plants is that

- (1) Plants produce gametes in somatic tissue, while animals produce gametes in germ tissue.
- (2) Plants produce gametes by mitosis, while animals produce gametes by meiosis.
- (3) Plants produce only one of each gamete, while animals produce many gametes.
- (4) None of these

46. What is the value of θ in the given diagram?

- (1) 30°
- (2) 45°
- (3) 60°
- (4) None of these

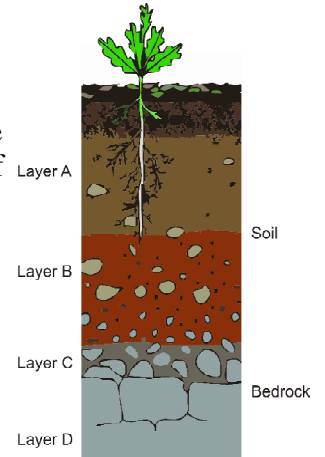


47. What is the angle between the incident and reflected rays when a ray of light is incident normally on a plane mirror?

- (1) 90°
- (2) 0°
- (3) 180°
- (4) None of these

48. Which soil layer is made up of small lumps of rocks?

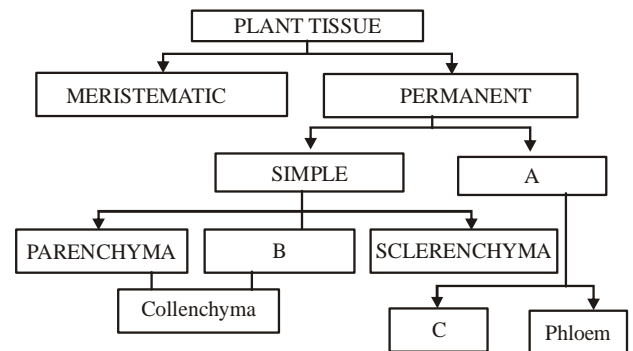
- (1) A-horizon
- (2) B-horizon
- (3) C-horizon
- (4) None of these



49. Which of the following was the factor in the development of timber plantations?

- (1) Natural forests were left untouched.
- (2) Lands used for cultivation of food crops were converted into timber plantations.
- (3) Natural forests were cleared to make way.
- (4) None of these

50.



The above table contains the names of basic plant tissues. What will come in the place of A, B and C?

- (1) A-Complex, B-Xylem, C-Collenchyma
- (2) A-Collenchyma, B-Complex, C-Xylem
- (3) A-Complex, B-Collenchyma, C-Xylem
- (4) None of these



END OF THE EXAM