



EDUHEAL FOUNDATION

EDUHEAL FOUNDATION CONDUCTS 8 OLYMPIADS ANNUALLY REACHING OUT TO 3,500 + SCHOOLS

• 5 LAKH + STUDENTS • 50,000 TEACHERS AND HAVING 500 RESOURCE PERSONS

IN ENGLISH / MATHS / SCIENCE / BIOTECH / COMPUTER / G.K. / ARTS / CRICKET / FINANCE & 300 REGIONAL COORDINATORS.

WEBSITE : WWW.EDUHEALFOUNDATION.ORG • E-MAIL : INFO@EDUHEALFOUNDATION.ORG

ICO INTERNATIONAL CYBER OLYMPIAD	NISO NATIONAL INTERACTIVE SCIENCE OLYMPIAD	NIMO NATIONAL INTERACTIVE MATHS OLYMPIAD	NBTO NATIONAL BIOTECHNOLOGY OLYMPIAD	IEO INTERNATIONAL ENGLISH OLYMPIAD	IGO INTERNATIONAL G.K. OLYMPIAD	BIFO BSE INTERNATIONAL FINANCE OLYMPIAD	NIPO NATIONAL IIT-PMT OLYMPIAD
---	---	---	---	---	--	--	---

Level - 1 : All Level-1 successful* participants will get certificate, aptitude report and online subscription, and school toppers will be eligible for school hero medals.

Level - 2 : School toppers* will be selected for level-2-National level - online computer based interactive test held at exam centres all over India. Besides selection for level-3, winner will get merit certificate, medals, educational CDs, laptop, scholarship and other prizes. There is no level 2 in Art, G.K. and Biotech.

Level - 3 : Toppers will qualify# for level 3-International level-where you will compete with students globally. Get selected for EHF's International Olympiad training camp. Only Indian organization giving students exposure to global competitions. Represent India & win laurels. Guidance by top scientists. Prizes ranges from cash (millions of \$), gadgets, foreign trips, publicity, fame, scholarships, Internships, conference participation and more. Level 3 is in Maths, Science & Cyber only.

*# See prospectus/website for details

- You are allowed additional 10 minutes to fill the required details in the **RESPONSE SHEET (OMR)**. **STUDENTS OF CLASS 1 & 2 HAVE TO UNDERLINE** THE CORRECT ANSWER IN THE QUESTION PAPER ITSELF. THEY ARE NOT REQUIRED TO USE THE RESPONSE SHEET (OMR). THEY HAVE TO FILL THEIR NAME, ROLL NUMBER, CLASS, SCHOOL NAME IN THE SPACE PROVIDED IN THE QUESTION PAPER.
- The question paper is made as per syllabus guidelines & pattern given in the information Booklet. The Question Paper for Classes 1 to 6 contains 25 Questions each to be answered in 40 minutes. The Question paper for classes 7 to 12 contains 50 Questions each to be answered in 60 minutes. All questions are compulsory. Further instructions are given in the instruction letter to the teacher.
- Use the response sheet to mark your responses by darkening the required circle. The response sheet has to be returned to the foundation, duly filled in. **THE STUDENT CAN RETAIN THE QUESTION PAPER EXCEPT FOR CLASSES 1 AND 2.**

E H F
NATIONAL
INTERACTIVE
SCIENCE
OLYMPIAD

N I S O

9
Class

A1
Paper Code

L E V E L - 1

Academic Partner — WWW.EDUSYS.IN

EtG
BOOKS

Creating **SUCCESS** Stories

EDUSYS LEARNING MEDIA

AIEEE • IIT • PMT • OLYMPIADS

intel
INTERNATIONAL
SCIENCE
AND
ENGINEERING
FAIR

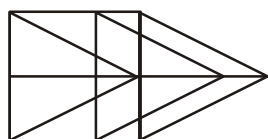
Google
Science
Fair

H
THE HARVARD - MIT MATHEMATICS TORNAJMENT

ORACLE ThinkQuest
EDUCATION FOUNDATION

GENERAL IQ

- In a coded language NUMBER is written as MFNYVI, then FIGURE may be written in coded language as:
(1) ERHFID (2) URTFIV
(3) GJFSF (4) None of these
- In a coded language SHIFT is written as UFKDV, then COVET may be written in coded language as:
(1) EMXCV (2) FNYDU
(3) EQUQS (4) None of these
- What will be the number of parallelograms in the given figure?



- (1) 15 (2) 17
(3) 13 (4) None of these

- Six students P, Q, R, S, T and U are standing in a circle. Q is between U and R, P is between T and S, U is to the left of S. Who is between P and U?
(1) S (2) R
(3) P (4) None of these
- This year India celebrated Republic Day on Wednesday. On which day of the week will India celebrate its Republic Day on 26th Jan, 2015?
(1) Sunday (2) Monday
(3) Tuesday (4) None of these
- At what angle are the hands of a clock inclined at 30 minutes past 6?
(1) $7\frac{1}{2}$ (2) $11\frac{1}{2}$
(3) 15 (4) None of these

7. A clock is set to show the correct time at 11 a.m. The clock gains 12 minutes in 12 hours. What will be the true time when the clock indicates 1 p.m on the 6th day?
- (1) 10 a.m. (2) 11 a.m.
(3) 12 p.m. (4) None of these
8. 0, 2, 2, 3, 3, 5, 8, 4, 10, (?) 5, 17
What will come in the place of (?) mark?
- (1) 9 (2) 7
(3) 15 (4) None of these
- Questions 9 and 10 consists of four options, of which one number is different from other three in someway. Find out the different one-
9. (1) 6253 (2) 1881
(3) 8210 (4) None of these
10. (1) CADGE (2) JHKNL
(3) ECFGI (4) None of these

GENERAL SCIENCE

11. Which of the following descriptions is true for describing 'fertiliser'?
- (1) Should be used in large quantity
(2) Produced in factories
(3) Does not cause pollution
(4) None of these
12. Rhizobium (a bacteria) which fixes atmospheric nitrogen are found in nodules growing in
- (1) Roots of leguminous plants
(2) Leaves of leguminous plants
(3) Stem of leguminous plants
(4) None of these
13. The following is an antibiotic.
- (1) Sodium bicarbonate
(2) Streptomycin
(3) Alcohol
(4) None of these
14. The most common carrier of communicable disease is _____.
- (1) Spider (2) Dragon fly
(3) House fly (4) None of these
15. The fibres that are obtained from cotton, jute and silk are known as
- (1) Man made or synthetic fibres
(2) Natural fibres
(3) Artificial fibres
(4) None of these

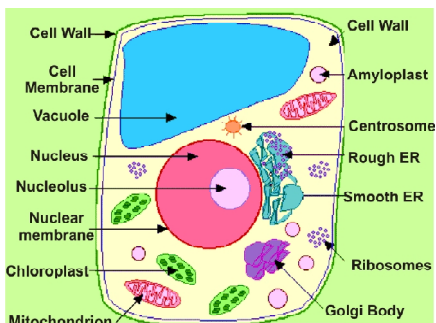
16. The fibres that are made by human beings are called
- (1) Man made or synthetic fibres
(2) Natural fibres
(3) Artificial fibres
(4) None of these
17. Match the terms of Column I correctly with the descriptions given in Column II
- | COLUMN-I | COLUMN-II |
|---------------|---|
| (i) Polyester | A. Prepared by using wood pulp |
| (ii) Teflon | B. Used for making parachutes and stockings |
| (iii) Rayon | C. Used to make non-stick cookwares |
| (iv) Nylon | D. Fabrics do not wrinkle easily |
- (1) (i)-D, (ii)-C, (iii)-A, (iv)-B
(2) (i)-A, (ii)-B, (iii)-C, (iv)-D
(3) (i)-D, (ii)-C, (iii)-B, (iv)-A
(4) None of these
18. The metals that produce ringing sounds are said to be-
- (1) Malleable
(2) Sonorous
(3) Lustrous
(4) None of these
19. Which metal is found in liquid state at room temperature?
- (1) Fe (2) Zn
(3) Hg (4) None of these
20. The solution of ash of magnesium ribbon is
- (1) Acidic
(2) Basic
(3) Neutral
(4) None of these
21. What is the product formed when sulphur reacts with oxygen?
- (1) Sulphuric acid
(2) Sulphur trioxide
(3) Sulphur dioxide
(4) None of these
22. Choose the incorrect match:
- | | |
|--------------------|--|
| P. Petroleum gas | - Fuel for home & industry |
| Q. Petrol | - Motor fuel, solvent for dry cleaning |
| R. Bitumen | - Paints, road surfacing |
| S. Lubricating oil | - Ointments, candles |
- (1) P (2) Q
(3) S (4) None of these

- 23.** Natural gas is found in:
- (1) Tripura
 - (2) Rajasthan
 - (3) Maharashtra
 - (4) All of these
- 24.** Which among the following isn't a tip to save petrol/diesel while driving?
- (1) Ensure correct tyre pressure.
 - (2) Ensure regular maintenance of the vehicle.
 - (3) Drive at a non-constant and non-moderate speed as far as possible.
 - (4) None of these
- 25.** Fire extinguishers-
- (1) Cut off the supply of air
 - (2) Bring down the temperature of fuel
 - (3) Both (1) & (2)
 - (4) None of these
- 26.** For combustion _____ is necessary.
- (1) Air
 - (2) Water
 - (3) Paper
 - (4) None of these
- 27.** Rapid combustion is
- (1) When gas burns, it produces heat and light.
 - (2) When material suddenly burst into flames.
 - (3) When there is evolution of heat.
 - (4) None of these
- 28.** The first National Park in India is:
- (1) Bandipur National Park
 - (2) Jim Corbett National Park
 - (3) Satpura National Park
 - (4) None of these
- 29.** Restoring of the destroyed forests by planting new trees is known as
- (1) Housekeeping
 - (2) Ecosystem
 - (3) Afforestation
 - (4) None of these
- 30.** Deforestation means:
- (1) Planting more trees
 - (2) Clearing of forests and using that land for other purposes
 - (3) Demanding forest
 - (4) None of these
- 31.** Which of the following is not a unicellular organism?
- (1) Amoeba
 - (2) Paramoecium
 - (3) Hydra
 - (4) None of these
- 32.** Which of the following shows budding ?
- (1) Yeast
 - (2) Amoeba
 - (3) Paramoecium
 - (4) None of these
- 33.** The main reason why teens look so awkward and "gangly" during puberty is:
- (1) Synchronicity in growth causes different body parts to grow at the same time.
 - (2) Asynchronicity in growth causes different body parts to grow at different times.
 - (3) Dietary problems cause their feet and hands to outgrow their torso.
 - (4) None of these
- 34.** The hypothalamus is a part of which body system?
- (1) Autonomic nervous system
 - (2) Endocrine system
 - (3) Central nervous system
 - (4) None of these
- 35.** Which among the following are myths & taboos ?
- (1) A pregnant lady shouldn't do household work.
 - (2) The mother is responsible for the sex of her child.
 - (3) A girl shouldn't be allowed to work in the kitchen during menstruation.
 - (4) All of these
- 36.** A batsman hits the ball for a boundary past the bowler i.e. four runs. The batsman thus
- (1) Changes both the direction and speed of the ball.
 - (2) Does not change the direction but speed only.
 - (3) Does not change the speed but direction only.
 - (4) None of these
- 37.** It is difficult to walk on an oily floor because
- (1) Floor gets spoiled
 - (2) There is more resistance
 - (3) Force of friction is very less
 - (4) None of these
- 38.** Humans can hear sound in the range of
- (1) 200-2000 Hz
 - (2) 20-20,000 Hz
 - (3) 2-20000 Hz
 - (4) None of these

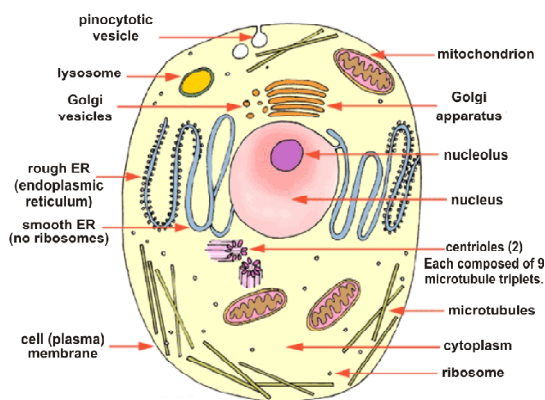
39. An ultrasound equipment works at a frequency of
- (1) Higher than 20,000 Hz
 - (2) Higher than 10,000 Hz
 - (3) Lower than 20,000 Hz
 - (4) None of these
40. Voice of men is heavy when compared to woman because
- (1) Female vocal cord is longer
 - (2) Male vocal cord is shorter
 - (3) Male vocal cord is longer
 - (4) None of these

INTERACTIVE SECTION

41. Comparing small and large cells, which statement is correct?
- (1) Small cells have a smaller surface area per volume ratio.
 - (2) Exchange rate of nutrients is faster with large cells.
 - (3) Small cells have a larger surface area per volume ratio.
 - (4) None of these
42. Which diagram represents the Animal Cell ?



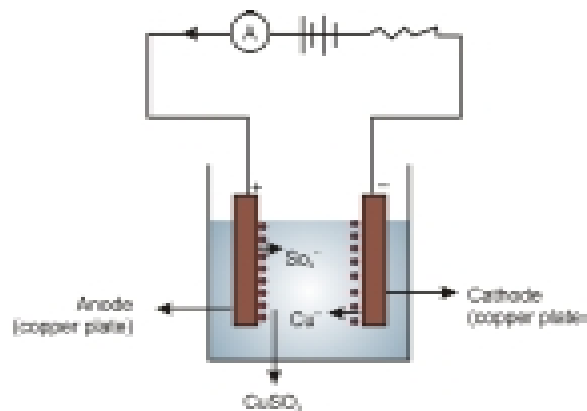
(1)



(2)

- (3) Both (1) & (2) (4) None of these
43. The following figure shows a copper voltmeter with copper electrodes. Current starts flowing in the circuit when the key is closed. Copper is removed from the anode and gets deposited on the cathode. The passage of current through the electrolyte is causing a chemical change. These

chemical changes take place as long as current flows through the electrolyte. This process of _____ is utilised in many industrial and commercial applications.



- (1) Electrokinetics
 - (2) Electroplating
 - (3) Electrolysis
 - (4) None of these
44. Electroplating is a process of depositing a thin layer of metal like gold or silver over an inferior material like iron. The object to be plated is used as a/an _____. The metal to be deposited is used as a/an _____.
- (1) Cathode, anode
 - (2) Anode, cathode
 - (3) Anode, anode
 - (4) None of these
45. Leaving the agricultural land, uncultivated for one or more seasons is known as
- (1) Field fallow
 - (2) Crop rotation
 - (3) Manuring
 - (4) None of these
46. Where is the intensity of tremor (vibrations) highest?
- (1) At the corner of the tectonic plates along fault.
 - (2) At the boundaries of the tectonic plates along fault.
 - (3) At the top side of the tectonic plates along fault.
 - (4) None of these
47. 'Avoid plastics as far as possible'. Choose the reason for the given statement:
- (1) They are non-biodegradable.
 - (2) They aren't eco-friendly and cause environmental pollution.
 - (3) They take years to degenerate.
 - (4) All are correct
48. Take an electric wire. Connect a bulb to the wire. Now connect the two terminals of the wire to the battery, which is the source of current. Now connect the wire through a plastic strip to the bulb. What will happen now?
- (1) The bulb will get fused.
 - (2) The bulb will not glow.
 - (3) The bulb will glow.
 - (4) None of these

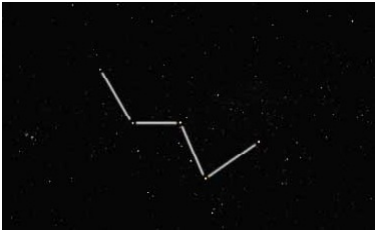
From the given figure identify the following constellations :

49.



- (1) Leo major
- (2) Orion
- (3) Cassiopeia
- (4) None of these

50.



- (1) Leo major
- (2) Orion
- (3) Cassiopeia
- (4) None of these



END OF THE EXAM