



EduHeal Foundation

EDUHEAL FOUNDATION CONDUCTS 10 OLYMPIADS ANNUALLY REACHING OUT TO 3,500 + SCHOOLS

• 5 LAKH + STUDENTS • 50,000 TEACHERS AND HAVING 500 RESOURCE PERSONS
IN ENGLISH / MATHS / SCIENCE / BIOTECH / COMPUTER / G.K. / ARTS / CRICKET / FINANCE & 300 REGIONAL COORDINATORS.

WEBSITE : WWW.EDUHEALFOUNDATION.ORG • E-MAIL : INFO@EDUHEALFOUNDATION.ORG

ICO INTERNATIONAL CYBER OLYMPIAD	NISO NATIONAL INTERACTIVE SCIENCE OLYMPIAD	NIMO NATIONAL INTERACTIVE MATH OLYMPIAD	NBTO NATIONAL BIOTECHNOLOGY OLYMPIAD	IEO INTERNATIONAL ENGLISH OLYMPIAD	IGO INTERNATIONAL G.K. OLYMPIAD	BIFO BSE INTERNATIONAL FINANCE OLYMPIAD	NIPO NATIONAL IIT-PMT OLYMPIAD
---	---	--	--	---	--	--	---

Level - 1 : All Level-1 successful* participants will get certificate, aptitude report and online subscription, and school toppers will be eligible for school hero medals.

Level - 2 : School toppers* will be selected for level-2-National level - online computer based interactive test held at exam centres all over India. Besides selection for level-3, winner will get merit certificate, medals, educational CDs, laptop, scholarship and other prizes. There is no level 2 in Art, Cricket, Cyber, NIPO and Biotech.

Level - 3 : Toppers will qualify# for level 3-International level-where you will compete with students globally. Get selected for EHF's International Olympiad training camp. Only Indian organization giving students exposure to global competitions. Represent India & win laurels. Guidance by top scientists. Prizes ranges from cash (millions of \$), gadgets, foreign trips, publicity, fame, scholarships, Internships, conference participation and more.

* # See prospectus/website for details

1. You are allowed additional 10 minutes to fill the required details in the **RESPONSE SHEET (OMR)**.
2. The question paper is made as per syllabus guidelines & pattern given in the information Booklet. The Question Paper for Classes 1 to 6 contains 25 Questions each to be answered in 40 minutes. The Question paper for classes 7 to 12 contains 50 Questions each to be answered in 60 minutes. All questions are compulsory. Further instructions are given in the instruction letter to the teacher.
3. Use the response sheet to mark your responses by darkening the required circle. The response sheet has to be returned to the foundation, duly filled in. **THE STUDENT CAN RETAIN THE QUESTION PAPER.**

EHF
NATIONAL INTERACTIVE SCIENCE OLYMPIAD

N I S O

5
Class

B1
Paper Code

LEVEL - 1

GENERAL IQ

1. Water is to glass as letter is to
 - (1) Mail
 - (2) Envelope
 - (3) Stamp
 - (4) None of these
2. If you rearrange the letter "ANLDEGN", you would have the name of a
 - (1) Country
 - (2) Cricket player
 - (3) State
 - (4) None of these
3. In a certain language GOLDFISH is coded as 49654312 and GOOD as 4995. How is the word SOLID coded in that language?
 - (1) 19536
 - (2) 19635
 - (3) 16953
 - (4) None of these

4. Which choice makes the best comparison?
LIVED is to DEVIL as 6323 is to
 - (1) 2636
 - (2) 3623
 - (3) 3236
 - (4) None of these
5. Shruti is taller than Shreya. Shilpa is taller than Shruti. Sheela is taller than Shilpa. Therefore who is the shortest of the 4.
 - (1) Shruti
 - (2) Shreya
 - (3) Shilpa
 - (4) None of these

GENERAL SCIENCE

6. Which of the following is given the name 'Black Gold' ?
 - (1) Coal
 - (2) Natural gas
 - (3) Petroleum
 - (4) None of these

7. The heart beat of a man was found to be 102 times in a minute. What had he most likely done?
- (1) Exercise (2) Eaten food
(3) Saw TV (4) None of these
8. Which of the following regarding moon is false?
- (1) The gravity on moon is $\frac{1}{6}$ of the earth's gravity.
(2) The moon makes a complete orbit around the earth in 365 days.
(3) Moon is the only celestial body on which humans have set foot.
(4) None of these
9. Electric switches are able to break the electrical circuits because
- (1) They form a gap between the terminals of the bulb and the cell.
(2) Air in the gap does not allow the current to pass through it.
(3) Both 1 and 2
(4) None of these
10. Which of the following is an example for a chemical change but not a physical change?
- (1) Freezing of water into ice
(2) An half eaten apple that turns brown
(3) Cutting of woods
(4) None of these
11. Ships made of steel do not sink. This is because
- (1) Steel is less dense than water and therefore it floats.
(2) The ship's engine creates an upward force that reduces the weight of the ship
(3) The weight of the ship is balanced by an upward buoyancy force.
(4) None of these
12. The process of mixing of saliva while chewing is called
- (1) Mastication
(2) Pasteurization
(3) Peristalsis
(4) None of these

13. Which is the set of deficiency diseases?

- (1) Malaria, Dengue, Kala-azar
(2) Cholera, Typhoid, Measles
(3) Scurvy, Night blindness, Rickets
(4) None of these

14. The shape of the moon changes every

- (1) Week (2) Day
(3) Month (4) None of these

- 15.



Which is the correct observation?

- (1) The mirror becomes hazy. This is because air in our blow contains water vapour which will condense on the mirror as its surface is colder than our inside body temperature.
(2) Air in our blow makes scratches on the mirror
(3) Air contains carbondioxide which get stuck on the mirror
(4) None of these
16. Government authorities have laid down guidelines for the use of plastics because
- (1) Plastic is non-decomposable
(2) Plastic is decomposable
(3) Manufacturing of plastic is expensive
(4) None of these
17. Which of the following adaptations enable the camel to live in a desert?
- (1) It excretes small amount of urine.
(2) It stores fat in its hump.
(3) Both 1 and 2
(4) None of these
18. Translucent objects are those objects
- (1) Through which we can see clearly
(2) Through which we can see but not clearly
(3) Through which we cannot see
(4) None of these

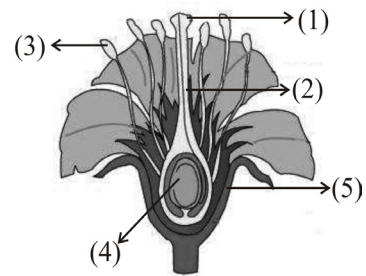
19. Deepti immersed a cotton ball into a bowl of water. Bubbles appeared from cotton because
- (1) Cotton produced bubbles
 - (2) Water occupies the spaces in cotton, thereby releasing air.
 - (3) Water produces air in the presence of cotton
 - (4) None of these
20. What happens to the food when it reaches the stomach?
- (1) Food stays here for sometime and then reaches the duodenum
 - (2) Digestive juices mix with food and stomach muscles squeeze the food.
 - (3) The food gets stored in the stomach walls
 - (4) None of these

INTERACTIVE SECTION

21. Take a plant and put it in a completely dark room for 2 days. After 2 days, pluck a leaf from the plant and heat till the green colour is lost. There after wash the leaf and carry out the iodine test. Which of the following statements regarding the results of the iodine test is correct?
- (1) It will give a blue-black colour with iodine.
 - (2) It will not give a blue-black colour with iodine
 - (3) It will give a positive iodine test
 - (4) None of these
22. Match the following
- | | |
|-------------------|-----------|
| A. Lithosphere - | 1. Air |
| B. Hydrosphere - | 2. Ozone |
| C. Atmosphere - | 3. Land |
| D. Stratosphere - | 4. Water. |
- (1) A - 4, B - 2, C - 3, D - 1
 - (2) A - 2, B - 1, C - 3, D - 4
 - (3) A - 3, B - 4, C - 1, D - 2
 - (4) None of these
23. Mohan had a list of objects with him which included a glass of water, wood, stone, tissue paper, diamond, etc. He is going to divide the objects according to their opacity. How is he going to do this?

- (1) Transparent objects – Glass of water, Diamond
Translucent objects – Tissue paper
Opaque objects – Wood, stone
- (2) Transparent objects – Wood, glass of water
Translucent objects – Tissue paper
Opaque objects – Diamond, stone
- (3) Transparent objects – Glass of water,
Tissue paper
Translucent objects – Wood
Opaque objects – Diamond, stone
- (4) None of these

24.



Which is the correct labelling for the above flower?

- (1) 1 – Stigma, 2 – Ovary, 3 – Sepal, 4 – Stamen, 5 – Style
 - (2) 1 – Stigma, 2 – Style, 3 – Stamen, 4 – Ovary, 5 – Sepal
 - (3) 1 – Stamen, 2 – Stigma, 3 – Sepal, 4 – Ovary, 5 – Style
 - (4) None of these
25. Rohit is constructing a simple torch using 3 cells, a bulb and a piece of wire. He has to connect the 3 cells with each other. Terminals of the cells are marked '+' and '-' which of the following is a possible combination of cells?
- (1)

+	-	-	+	-	+
---	---	---	---	---	---

 (2)

-	+	-	+	-	+
---	---	---	---	---	---
 - (3)

+	+	-	+	-	-
---	---	---	---	---	---

 (4) None of these



END OF THE EXAM