



EHF

LEARNING FOR LIFE

EDUHEAL FOUNDATION

CLASS 3

LEVEL - 1

Set A1

EHF OLYMPIADS

- 4000 schools • 6 lakh students
- 10 olympiads • Global outreach



EHF

NATIONAL INTERACTIVE SCIENCE OLYMPIAD

Name :

Roll No :

Class :

School :



**NATIONAL
BIOTECHNOLOGY
OLYMPIAD**



**NATIONAL
MATHS
OLYMPIAD**



**NATIONAL
SCIENCE
OLYMPIAD**



**INTERNATIONAL
CYBER
OLYMPIAD**



**INTERNATIONAL
ENGLISH
OLYMPIAD**



**INTERNATIONAL
GENERAL KNOWLEDGE
OLYMPIAD**



BSE international finance olympiad (BIFO)



NATIONAL IIT-PMT OLYMPIAD (NIPO)

Level - 1 : All Level-1 successful* participants will get certificate, aptitude report and online subscription, and school toppers will be eligible for school hero medals.

Level - 2 : School toppers* will be selected for level-2-National level - online computer based interactive test held at exam centres all over India. Besides selection for level-3, winner will get merit certificate, medals, educational CDs, laptop, scholarship and other prizes. There is no level-2 in Art and Cricket.

Level - 3 : Toppers will qualify* for level-3-International level-where you will compete with students globally. Get selected for EHF's International Olympiad training camp. Only Indian organization giving students exposure to global competitions. Represent India & win laurels. Guidance by top scientists. Prizes ranges from cash (millions of \$), gadgets, foreign trips, publicity, fame, scholarships, Internships, conference participation and more.

* # See prospectus/website for details

Instructions for the Candidate

1. You are allowed additional 10 minutes to fill the required details in the RESPONSE SHEET (OMR).
2. The question paper is made as per syllabus guidelines & pattern given in the information Booklet. The Question Paper for Classes 1 to 6 contains 25 Questions each to be answered in 40 minutes. The Question paper for classes 7 to 12 contains 50 Questions each to be answered in 60 minutes. All questions are compulsory. Further instructions are given in the instruction letter to the teacher.
3. Use the response sheet to mark your responses by darkening the required circle. The response sheet has to be returned to the foundation, duly filled in. THE STUDENT CAN RETAIN THE QUESTION PAPER.

WEBSITE : WWW.EDUHEALFOUNDATION.ORG
E-MAIL : INFO@EDUHEALFOUNDATION.ORG

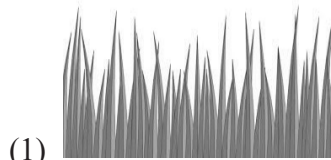
ROUGH WORK

GENERAL IQ

1. Which of the following is the young one of Kangaroo?

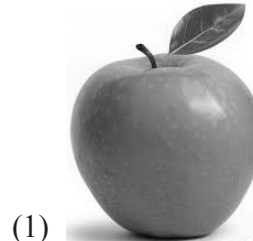
- (1) Joey
- (2) Cub
- (3) Chick
- (4) None of these

2. Which of the following is a herb?



- (4) None of these

3. Which tastes the most sour?

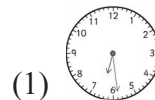


- (4) None of these

4. Which of the following Roman numerals is meaningless?

- (1) XVIII
- (2) IXIV
- (3) XXIV
- (4) None of these

5. Which of the following is not correctly shown?



- half past 6



- Quarter to 11



- Quarter to 10

- (4) None of these

GENERAL SCIENCE

6. What do you call a scientist that studies life?



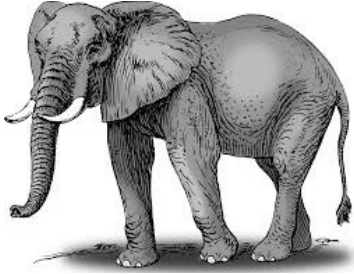
- (1) Biologist
- (2) Geologist
- (3) Physicist
- (4) None of these

7. Which are not predators?





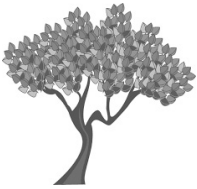
(2)



(3)

(4) None of these

8. Which of the following need air?



(1) Plants

(2) Human Beings

(3) Both (1) and (2)

(4) None of these

9. When water is poured into different containers, what changes?

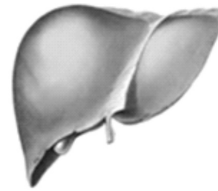


- (1) Amount
- (2) It turns solid
- (3) Shape
- (4) None of these

10. How long does it take for the phases of the Moon to start and finish?

- (1) 1 day
- (2) 1 week
- (3) 1 month
- (4) none of these

11. Which of the following is an organ of the circulatory system?



(1) Liver



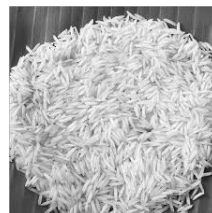
(2) Small intestine



(3) Heart

(4) None of these

12. Which of the following has highest carbohydrate percentage?



(1)



(2)



(3)

(4) None of these

13. The muscles, tissues and blood are all made up of

(1) fats

(2) proteins

(3) vitamins

(4) none of these

14. What do you do for small cut?

(1) Wash with soap and water, cover with a sterile bandage

(2) Only cover with a sterile bandage

(3) Clean the wound with cotton wood

(4) None of these

15. The role of the organ given below is:



Brain

(1) Pumps blood

(2) Help us to think

(3) Remove waste

(4) None of these

16. The name of the closest star to the earth is

(1) Sun

(2) Moon

(3) Both (1) and (2)

(4) None of these

17. The disease Cholera, Typhoid and Jaundice are due to pollution of _____ .

(1) air

(2) water

(c) Food items

(4) None of these

18. Humans breathe in about _____ of air everyday!

(1) 16 litres

(2) 20 litres

(3) 25 litres

(4) None of these

19. Which of these are protective foods?



(1)



(2)

(3) Both (1) and (2)

(4) None of these

20. The number of known species of mammals are

(1) 6576

(2) 4230

(3) 8674

(4) None of these

INTERACTIVE SECTION

21. Name the first step in the scientific method.

- (1) Imagine the end of the world
- (2) Ask questions
- (3) Make an experiment
- (4) None of these

22. The name of the long appendage that hangs from an elephant face.

- (1) Trunk
- (2) Tail
- (3) Skull
- (4) None of these

23. A device used to measure temperature is



(1)

(2)



(3)

(4) None of these



24. Which of the following is the centre of the solar system?



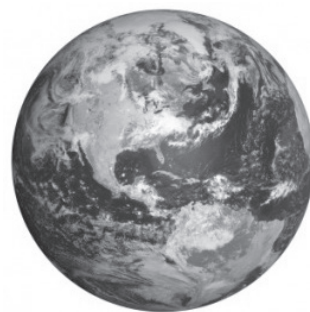
(1)

Sun



(2)

Moon

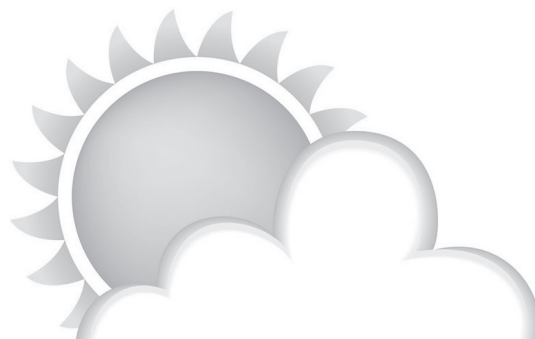


Earth

(3)

(4) None of these

25. Which of the following affect germination of the seed?



(1)



(2)

(3) Both (1) and (2)

(4) None of these



END OF THE EXAM