



EHF
LEARNING FOR LIFE

**EDUHEAL
FOUNDATION**

**CLASS
4**

LEVEL - 1

Set A1

EHF OLYMPIADS

- 4000 schools • 6 lakh students
- 10 olympiads • Global outreach



EHF

**NATIONAL INTERACTIVE
SCIENCE OLYMPIAD**

Name :

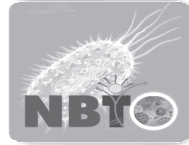
Roll No :

Class :

School :



**NATIONAL
BIOTECHNOLOGY
OLYMPIAD**



**NATIONAL
MATHS
OLYMPIAD**



**NATIONAL
SCIENCE
OLYMPIAD**



**INTERNATIONAL
CYBER
OLYMPIAD**



**INTERNATIONAL
ENGLISH
OLYMPIAD**



**INTERNATIONAL
GENERAL KNOWLEDGE
OLYMPIAD**



BSE international finance olympiad (BIFO)



NATIONAL IIT-PMT OLYMPIAD (NIPO)

Level - 1 : All Level-1 successful* participants will get certificate, aptitude report and online subscription, and school toppers will be eligible for school hero medals.

Level - 2 : School toppers* will be selected for level-2-National level - online computer based interactive test held at exam centres all over India. Besides selection for level-3, winner will get merit certificate, medals, educational CDs, laptop, scholarship and other prizes. There is no level-2 in Art and Cricket.

Level - 3 : Toppers will qualify* for level-3-International level-where you will compete with students globally. Get selected for EHF's International Olympiad training camp. Only Indian organization giving students exposure to global competitions. Represent India & win laurels. Guidance by top scientists. Prizes ranges from cash (millions of \$), gadgets, foreign trips, publicity, fame, scholarships, Internships, conference participation and more.

* # See prospectus website for details

Instructions for the Candidate

1. You are allowed additional 10 minutes to fill the required details in the RESPONSE SHEET (OMR).
2. The question paper is made as per syllabus guidelines & pattern given in the information Booklet. The Question Paper for Classes 1 to 6 contains 25 Questions each to be answered in 40 minutes. The Question paper for classes 7 to 12 contains 50 Questions each to be answered in 60 minutes. All questions are compulsory. Further instructions are given in the instruction letter to the teacher.
3. Use the response sheet to mark your responses by darkening the required circle. The response sheet has to be returned to the foundation, duly filled in. **THE STUDENT CAN RETAIN THE QUESTION PAPER.**

WEBSITE : WWW.EDUHEALFOUNDATION.ORG
E-MAIL : INFO@EDUHEALFOUNDATION.ORG

ROUGH WORK

GENERAL IQ

1. 'Air' is to 'Bird' as 'Water' is to _____

- (1) Drink
- (2) Fish
- (3) Wash
- (4) None of these

2. Three of the following four are alike in a certain way and so form a group. Which is the one that does not belong to that group?

- (1) Sun
- (2) Universe
- (3) Moon
- (4) None of these

3. Choose the missing term out of the given alternatives.

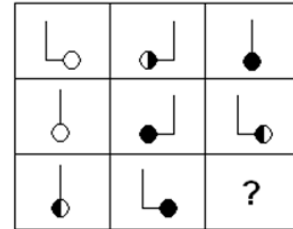
AZ, GT, MN, ?, YB

- (1) KF
- (2) RX
- (3) SH
- (4) None of these

4. Which of the following is used in pencils?

- (1) Graphite
- (2) Silicon
- (3) Charcoal
- (4) None of these

5. Please find the figure continuing the series:



- (1)
- (2)
- (3)
- (4) None of these

GENERAL SCIENCE

6. Which of the following is a non-living thing?



- (3)
- (4) All of the above

7. Medicine of quinine is provided by

- (1) Eucalyptus plant
- (2) Aconite plant
- (3) Cinchona plant
- (4) None of these

8. Which phenomenon do bats or dolphins use to find prey, predators or obstacles?

- (1) Refraction of sound
- (2) Formation of beats
- (3) Echo location
- (4) None of these

9. Which weather instrument is used to measure atmospheric pressure?



(1)



(2)

(3) Both (1) and (2)

(4) None of these

10. Dairy products are generally made from what common liquid?



(1)



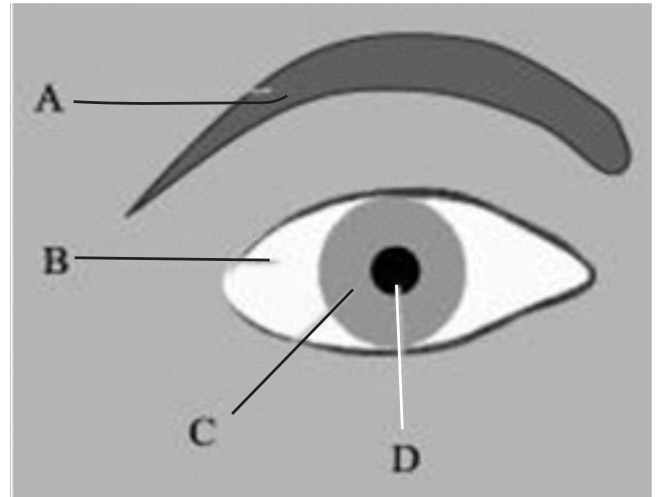
(2)



(3)

(4) None of these

11. Identify pupil in this diagram.



- (1) A
- (2) B
- (3) D
- (4) None of these

12. Gautam's mother asks him to wash his hands before eating to remove the germs on his hands. BEFORE doing which of the following also should he wash his hands?

- (1) Cleaning his cycle
- (2) Taking off his shoes
- (3) Putting medicine on the cut on his knee
- (4) None of these

13. An instrument used by doctors to look in ears



(1)



(2)



- (3)
- (4) None of these

14. I look like a cup upside-down. In snowy areas I am found. Inside me, you will feel warm. What am I?

- (1) Houseboat
- (2) House On Stilts
- (3) Igloo
- (4) None of these

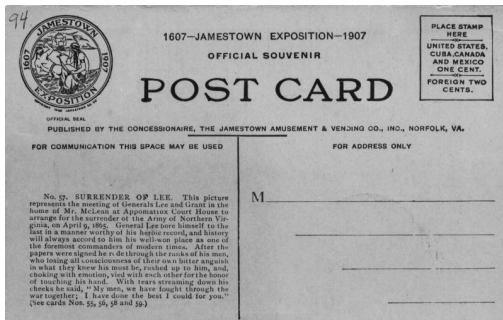
15. Alexander Graham Bell was first to invent



- (1)



- (2)



- (3)
- (4) None of these

16. The _____ of plants take in carbon dioxide from the air that animals give off.

- (1) Flower
- (2) Roots
- (3) Leaf
- (4) None of these

17. Identify the picture given below:



- (1) Helicopter
- (2) Train
- (3) Aeroplane
- (4) None of these

18. Which are a plant's flowers?

- (1) Beets
- (2) Broccoli
- (3) Lima beans
- (4) None of these

19. What is the human body's biggest organ?

- (1) Kidney
- (2) Heart
- (3) Skin
- (4) None of these

20. What percentage of household water use does the bathroom account for?




- (1) (70-75)%
- (2) (55-60)%
- (3) (80-85)%
- (4) None of these

INTERACTIVE SECTION

21. What equipment is best used to view cells?

- (1) Telescope
- (2) Periscope
- (3) Microscope
- (4) None of these

22. Match the following:

- | | | |
|-------------------------|-----|---|
| (i) Primary Consumer | (1) |  |
| (ii) Secondary Consumer | (2) |  |
| (iii) Tertiary Consumer | (3) |  |

- (1) (i)-(b); (ii)-(c); (iii)-(a)
- (2) (i)-(a); (ii)-(b); (iii)-(c)
- (3) (i)-(c); (ii)-(b); (iii)-(a)
- (4) None of these

23. Many kinds of snakes are found in India. Some are poisonous. The poisonous snakes are

- (1) Worm snake, Viper, Python
- (2) Common Krait, Russel's viper and Cobra
- (3) Chameleon, Cobra, Worm snake
- (4) None of these

24. Nimbus, cumulus and stratus are types of what?



- (1)



(2)



(3)

(4) None of these

25. How is the snail's shell similar the porcupine's quills?



- (1) They are both used for digestion.
- (2) They are both used for protection.
- (3) They are both used for food gathering.
- (4) None of these



END OF THE EXAM