



EHF
LEARNING FOR LIFE

**EDUHEAL
FOUNDATION**

**CLASS
6**

LEVEL - 1

Set A1

EHF OLYMPIADS

- 4000 schools • 6 lakh students
- 10 olympiads • Global outreach



EHF

**NATIONAL INTERACTIVE
SCIENCE OLYMPIAD**

Name :

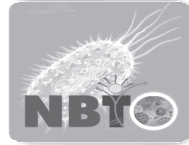
Roll No :

Class :

School :



**NATIONAL
BIOTECHNOLOGY
OLYMPIAD**



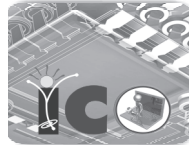
**NATIONAL
MATHS
OLYMPIAD**



**NATIONAL
SCIENCE
OLYMPIAD**



**INTERNATIONAL
CYBER
OLYMPIAD**



**INTERNATIONAL
ENGLISH
OLYMPIAD**



**INTERNATIONAL
GENERAL KNOWLEDGE
OLYMPIAD**



BSE international finance olympiad (BIFO)



NATIONAL IIT-PMT OLYMPIAD (NIPO)

Level - 1 : All Level-1 successful* participants will get certificate, aptitude report and online subscription, and school toppers will be eligible for school hero medals.

Level - 2 : School toppers* will be selected for level-2-National level - online computer based interactive test held at exam centres all over India. Besides selection for level-3, winner will get merit certificate, medals, educational CDs, laptop, scholarship and other prizes. There is no level-2 in Art and Cricket.

Level - 3 : Toppers will qualify* for level-3-International level-where you will compete with students globally. Get selected for EHF's International Olympiad training camp. Only Indian organization giving students exposure to global competitions. Represent India & win laurels. Guidance by top scientists. Prizes ranges from cash (millions of \$), gadgets, foreign trips, publicity, fame, scholarships, Internships, conference participation and more.

* # See prospectus/website for details

Instructions for the Candidate

1. You are allowed additional 10 minutes to fill the required details in the RESPONSE SHEET (OMR).
2. The question paper is made as per syllabus guidelines & pattern given in the information Booklet. The Question Paper for Classes 1 to 6 contains 25 Questions each to be answered in 40 minutes. The Question paper for classes 7 to 12 contains 50 Questions each to be answered in 60 minutes. All questions are compulsory. Further instructions are given in the instruction letter to the teacher.
3. Use the response sheet to mark your responses by darkening the required circle. The response sheet has to be returned to the foundation, duly filled in. **THE STUDENT CAN RETAIN THE QUESTION PAPER.**

WEBSITE : WWW.EDUHEALFOUNDATION.ORG
E-MAIL : INFO@EDUHEALFOUNDATION.ORG

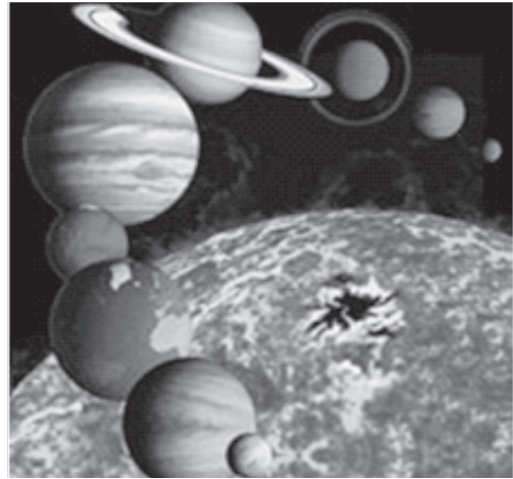
ROUGH WORK

GENERAL IQ

- Which number should come next in this series?
3, 5, 8, 13, 21,
 - 4
 - 21
 - 34
 - None of these
- Which one of the following is least like the other?
 - Bottle
 - Funnel
 - Cup
 - None of these
- How many hours is IST ahead of Greenwich Mean Time?
 - 4.5 Hours
 - 5 Hours
 - 5.5 Hours
 - None of these
- How many stars are there in our Solar System?
 - 1
 - 2

- 3
- None of these

- Beginning with the closest to the sun, what is the correct order of the planets?



- Mars, Venus, Earth, Mercury, Jupiter, Saturn, Uranus, and Neptune.
- Mercury, Mars, Earth, Venus, Jupiter, Saturn, Uranus, and Neptune.
- Mercury, Venus, Earth, Mars, Jupiter, Saturn, Uranus and Neptune.
- None of these

GENERAL SCIENCE

- Which of the following is/are non-flowering plants?
 - Fern
 - Moss
 - Both (1) and (2)
 - None of these
- Under water frogs breathe through their _____
 - lungs
 - moist skin
 - spiracles
 - none of these
- An adult requires how much proteins daily:
 - 30 to 50 grams

- 50 to 100 grams
- 100 to 150 grams
- None of these

- A bacterial disease is
 - Leprosy
 - Polio
 - Chicken pox
 - None of these
- What are the four requirements of all habitats?
 - food, water, space, and trees
 - food, water, cover, and space
 - food, cover, shelter, arrangement
 - None of these

11. The picture shows a glass of cold water. There are water drops on the outside of the glass. Where did the water come from?



- (1) It leaked through the glass.
- (2) It was sweat from a person.
- (3) It condensed from the warmer air meeting the cold glass
- (4) None of these

12. An exhaustible renewable resource is



- (1) Coal Heap



- (2) Solar Energy



- (3) Fresh Water lake
- (4) None of these

13. Name two microorganisms which live in symbiotic association in lichens.

- (1) Bacteria and Fungus
- (2) Alga and Fungus
- (3) Bacteria and Alga
- (4) None of these

14. Quinine is used for

- (1) Curing Pimples
- (2) Curing Typhoid
- (3) Curing Malaria
- (4) None of these

15. If there is no sun the colour of the sky would be

- (1) Blue
- (2) Orange
- (3) Black
- (4) None of these

16. Which of the following is the most likely food source for a carnivore?



- (1)



- (2)

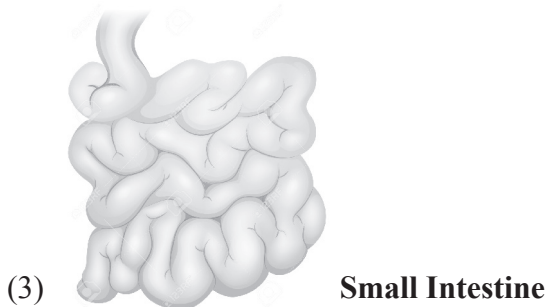
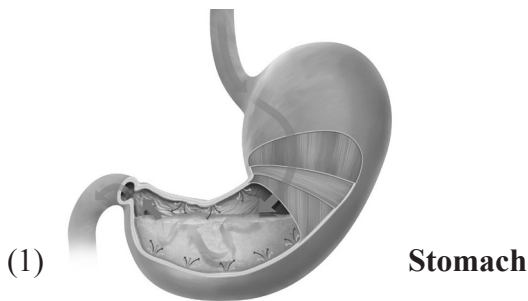


- (3)
- (4) None of these

17. Diseases of the heart, joints and nervous system are called

- (1) communicable diseases.
- (2) degenerative diseases
- (3) deficiency diseases
- (4) none of these

18. Where is food broken down to molecule size allowing it to pass through villi into the blood stream?



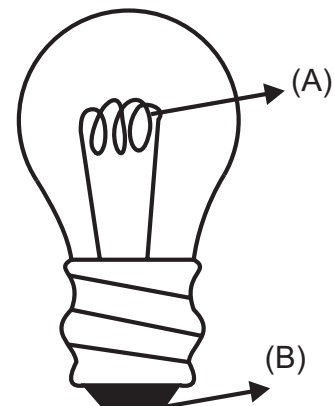
- (4) None of the above

19. Which picture shows the method of separating seeds of paddy from its stalks?



- (4) None of these

20. What are A and B called in the given figure of an electric bulb?



Electric Bulb

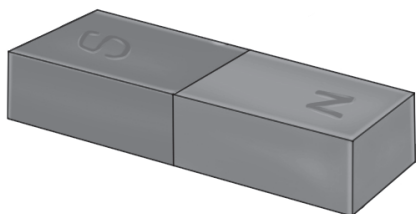
- (1) A is Filament and B is Terminal
- (2) A is Terminal and B is Filament
- (3) A is Holder and B is Element
- (4) None of these

INTERACTIVE SECTION

21. Which of the following has the highest pH value?

- (1) Lime juice
- (2) Wine
- (3) Caustic soda
- (4) None of these

22. In olden days, sailors used to find direction by suspending a piece of



(1)



(2)



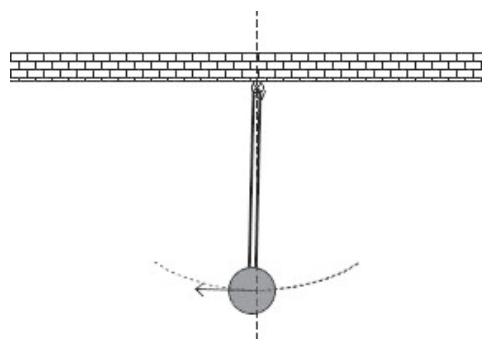
(3)

(4) None of these

23. During the experiment on photosynthesis, leaf is boiled in which of these liquids?

- (1) Water
- (2) Alcohol
- (3) Iodine
- (4) None of these

24. What type of motion is shown by pendulum?



- (1) Periodic motion
- (2) Oscillatory motion
- (3) Both (1) and (2)
- (4) None of these

25. The image formed by a plane mirror is

- (1) Virtual erect and is of the same size as the object.
- (2) Real, inverted and is smaller in size as compared to the object.
- (3) Real, erect and is of same size as the object
- (4) None of these



END OF THE EXAM