

GENERAL IQ

1. Which is not a fruit?

(1)



(2)



(3)



(4)



2. What is the colour of your blood?

(1) Blue

(2) Yellow

(3) Black

(4) Red

3. Which can jump the highest?

(1)



(2)



(3)



(4)



4. On what day of the week does the month end?

(1) Monday

(2) Thursday

(3) Friday

(4) Sunday

FEBRUARY						
SUN	MON	TUE	WED	THU	FRI	SAT
						1
2	3	4	5	6	7	8
9	10	11	12	13	14	15
16	17	18	19	20	21	22
23	24	25	26	27	28	

5. Fill in the missing time.

8:00, 7:00, 6:00, 5:00,

(1) 10:00

(2) 4:00

(3) 6:00

(4) 12:00

6. Which one is correct match of the following tool?

(a) Eraser tool

(b) Rectangle tool

(c) Brush tool

(d) Text tool

(i)



(ii)



(iii)



(iv)



(1) (a)-(i), b-(iii), c-(ii), d-(iv)

(2) (a)-(i), b-(iii), c-(ii), d-(iv)

(3) (a)-(ii), b-(iv), c-(i), d-(iii)

(4) (a)-(i), b-(iii), c-(ii), d-(iv)

7. Which one is light weight and compact?

(1)



(2)



(3)



(4)



8. A blinking vertical line, where characters typed from the keyboard appear in a word processor program is called

(1) Arrow

(2) Cursor

(3) Marker

(4) Insertion point

9. Given below is the two statements about hardware and software. Select the correct statement.

Statement A: Only with the help of hardware we can work on a computer. Statement B: Only with the help of software we can work on a computer.

(1) Statement A is correct.

(2) Statement B is correct.

(3) Both statements are incorrect.

(4) Both statements are correct.

10. Find the odd one out.

(1) Projector

(2) Speaker

(3) Monitor

(4) Microphone

GENERAL SCIENCE

11. Which of the following is not a living thing?

(1)



(2)



(3)



(4)



12. The _____ is where the plant makes food.

(1) leaf

(2) flower

(3) fruit

(4) stem

13. Rabbit lives in

(1) Burrow

(2) Tree

(3) Coop

(4) Kennel



14. What are clouds made out of?

(1) Water

(2) Smoke

(3) Cotton

(4) Both (1) and (2)



15. South Indians use _____ oils as medium of cooking.

(1) soya

(2) mustard

(3) natural

(4) coconut

16. Dinesh plays the music very loudly, it will soon damage his _____.

(1)



(2)



(3)



(4)



17. Water droplets that are too heavy to float make

(1) fog

(2) clouds

(3) rain

(4) dew

18. People who repair cars and scooters is known as

(1) Mechanic

(2) Cook

(3) Shopkeeper

(4) Labourer

19. Example of mass communication-

(1)



(2)



(3)



(4) All of the above

20. Match with the pictures:

A

B

(a)



(i) Aeroplane

(b)



(ii) Car

(c)



(iii) Train

(d)



(iv) Auto

(1) (a) - (iv), (b) - (ii), (c) - (i), (d) - (iii)

(2) (a) - (iii), (b) - (i), (c) - (ii), (d) - (iv)

(3) (a) - (ii), (b) - (iv), (c) - (iii), (d) - (i)

(4) (a) - (iii), (b) - (ii), (c) - (i), (d) - (iv)

21. Which of the following plant bears tendrils?

(1) Brinjal

(2) Orange

(3) Mango





(4) Sweet pea

22. Which characteristic of living being is shown in figure below?

- (1) Living things grow
- (2) Living things respire
- (3) Living things move
- (4) Both (1) and (3)



23. Which of the following animals do not lay eggs?

- (1) 
- (2) 
- (3) 
- (4) 

24. Aeroplanes are kept in place called

- (1) Storehouse
- (2) Gordon
- (3) Langer
- (4) Hanger

25. I look like a cup upside-down. In snowy areas I am found. Inside me you will feel warm. What am I?

- (1) Houseboat
- (2) House on Stilts
- (3) Igloo
- (4) Caravan

26. The diagram shown below is of

- (1) Nose
- (2) Liver
- (3) Skin
- (4) Tongue



27. The person who care for Milch animals is called

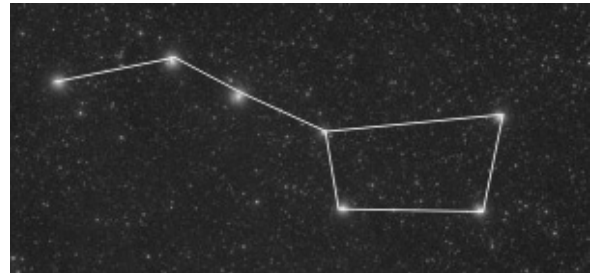
- (1) Soil man
- (2) Fisherman
- (3) Milkman
- (4) Waterman

28. Your class is making ice cream during an activity. Which of the following items would not have helped in the freezing process of the milk and cream liquid?

- (1) Sugar
- (2) Salt
- (3) Ice
- (4) Water



29. What do we call a group of stars that looks like a picture?



- (1) Constellation
- (2) Solar System
- (3) Milky Way
- (4) Galaxy

30. A sign that an apple tree is going to start growing apples is when the tree has:

- (1) Flowers
- (2) Roots
- (3) Trunk
- (4) Leaves

INTERACTIVE SECTION

31. The drop of water on the leaf seen in the early morning is known as



- (1) snow
- (2) hail
- (3) dew
- (4) none of these

32. Which animal would you find inside your house?

- (1) 
- (2) 

- (3) 
- (4) All of these

33. Which source of water is man made?

(1)



(2)



(3)



(4) None of these

34. The following image is related to which place?



(1)



(2)



(3)



(4) None of these

35. Find the odd one out.

(1)



(2)



(3)



(4) None of these

36. Which person needs to do his work first of all to build a house?

(1)



(2)



(3)



(4) None of these

37. Which natural calamity is associated with rainfall?

(1) Drought

(2) Flood

(3) Volcanic eruption

(4) None of these

38. Which of the following are obtained from plants?

(1)



(2)



(3)



(4) None of these

39. Your doctor has asked you not to eat fast food which one of the following should you avoid?

(1)



(2)



(3)



(4) None of these

40. Your mother is cutting vegetables in the kitchen. You saw tears in her eyes. Which vegetable is she cutting?

(1)



(2)



(3)



(4) None of these



END OF THE EXAM