



# EDUHEAL FOUNDATION

# CLASS 6

**LEVEL - 1**

**Set A1**

## EHF OLYMPIADS

- 4000 schools • 6 lakh students
- 11 olympiads • Global reach



**EHF**

## NATIONAL INTERACTIVE SCIENCE OLYMPIAD

Name : .....

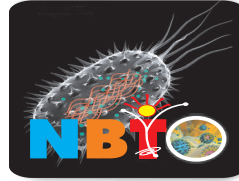
Roll No : .....

Class : .....

School : .....



### NATIONAL BIOTECHNOLOGY OLYMPIAD



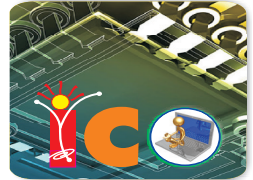
### NATIONAL INTERACTIVE MATHS OLYMPIAD



### NATIONAL INTERACTIVE SCIENCE OLYMPIAD



### INTERNATIONAL CYBER OLYMPIAD



### INTERNATIONAL ENGLISH OLYMPIAD



### INTERNATIONAL GENERAL KNOWLEDGE OLYMPIAD



### BSE international finance olympiad (BIFO)



### NATIONAL IIT-PMT OLYMPIAD (NIPO)

#### Instructions for the Candidate

1. You are allowed additional 10 minutes to fill the required details in the RESPONSE SHEET (OMR).
2. The question paper is made as per syllabus guidelines & pattern given in the information Booklet. The Question Paper for Classes 1 to 6 contains 40 Questions each to be answered in 60 minutes. The Question paper for classes 7 to 11 contains 60 Questions each to be answered in 60 minutes. All questions are compulsory. Further instructions are given in the instruction letter to the teacher.
3. Use the response sheet to mark your responses by darkening the required circle. The response sheet has to be returned to the foundation, duly filled in. THE STUDENT CAN RETAIN THE QUESTION PAPER.

WEBSITE : [WWW.EDUHEALFOUNDATION.ORG](http://WWW.EDUHEALFOUNDATION.ORG)  
E-MAIL : [INFO@EDUHEALFOUNDATION.ORG](mailto:INFO@EDUHEALFOUNDATION.ORG)

# ROUGH WORK

# GENERAL IQ

1. Select the correct choice:

Grain : Stock :: Stick : ?

- (1) String
- (2) Heap
- (3) Collection
- (4) Bundle

2. Find the odd one out:

- (1) Debit
- (2) Deposit
- (3) Deduction
- (4) Withdrawal

3. A woman introduces a man as the son of the brother of her mother. How is the man related to the woman?

- (1) Uncle
- (2) Grandson
- (3) Cousin
- (4) Son

4. Fill the empty box:



A



B



C



D



(1)



(2)



(3)



(4)

- (1) 1
- (2) 2
- (3) 3
- (4) 4

5. What number completes this series: 6, 1, 8, 3, 10, ?

- (1) 4
- (2) 5
- (3) 12
- (4) 7

6. Which option is not available when we set desktop background?

- (1) Starch
- (2) Wide
- (3) Tile
- (4) Center

7. 'Type face option' will come under which menu?

- (1) Edit
- (2) Format
- (3) Tools
- (4) View

8. The ASCII code for the character J is

- (1) 1001 0001
- (2) 1001 1010
- (3) 0100 1010
- (4) 1010 0001

9. Which of the following excel screen components can NOT be turned on or off?

- (1) Formula bar
- (2) Status bar
- (3) Tool bar
- (4) None of above

10. Where can you change automatic or manual calculation mode in excel?

- (1) Double CAL indicator on status bar.
- (2) Go to tools >> options >> calculation and mark the corresponding radio button.
- (3) Both of above
- (4) None of above

# GENERAL SCIENCE

11. Which part of pumpkin plant do we eat?

- (1) Fruit
- (2) Root
- (3) Stem
- (4) All of these

12. A digestive enzyme functional only in infants is

- (1) Cellulase
- (2) Lipase
- (3) Lactase
- (4) Fructose

13. Which fibre yielding plant should be grown in a field having black soil and warm climate?

- (1) Jute
- (2) Wool
- (3) Coconut
- (4) Cotton

14. Which of the following is insoluble in water?

- (1) Lemon juice
- (2) Salt
- (3) Sugar
- (4) Sand

15. Which of the following dissolve in water?

- (1) Only solid
- (2) Only gases
- (3) Only liquid
- (4) Solid, liquid and gases

16. What characteristic best describe the change during physical changes?

- (1) Change in composition
- (2) Change in forms

(3) Composition remain same

(4) Loss in mass

17. Which of the following plant develops tendrils?

- (1) Rose plant
- (2) Pea plant
- (3) Mustard plant
- (4) Guava plant

18. The bone shown in the figure is called

- (1) pelvic bone
- (2) chest bone
- (3) shoulder bone
- (4) vertebral bone

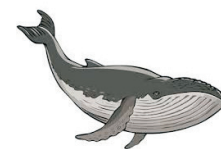


19. Which of these animals you do not found in Antarctica?

(1)



(2)



(3)



(4)



20. Speedometer fitted on dashboard of car measures

- (1) average speed of the car
- (2) initial speed of car
- (3) speed of car at particular moment
- (4) final speed of the car

21. Shadow is formed due to

- (1) rectilinear propagation of light.
- (2) parallel propagation of light.
- (3) passing of light through object.
- (4) all of these

22. Nichrome is used in coil of heater because
- (1) high resistance and low melting point.
  - (2) it has high resistance and high melting point.
  - (3) low resistance and high melting point.
  - (4) low resistance and high melting point.

23. Which of the following is stronger?

- (1) Natural magnet
- (2) U-shaped magnet
- (3) Bar magnet
- (4) All are equally strong

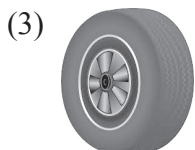
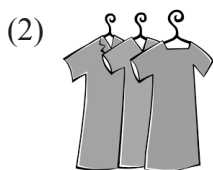
24. When water evaporates directly from glacial ice, it is called

- (1) condensation
- (2) transpiration
- (3) sublimation
- (4) precipitation

25. Through which of the following parts of leaves plants take oxygen?

- (1) Stomata
- (2) Midribs
- (3) Leaves tip
- (4) Petiole

26. Which one of the following cannot be recycled?



27. Padmini observed the shadow of a tree at 8:00 a.m., 12:00 noon and 3:00 p.m. Which of the following statements is closest to her observation about the shape and size of the shadow?

- (1) The shape of the shadow of the tree changes but the size remains the same.
- (2) The size of the shadow of the tree changes but the shape remains the same.
- (3) Both the size and shape of the shadow of the tree change.
- (4) Both (1) and (2)

28. Riya moves on a straight road from point A to point C. She takes 20 minutes to cover a certain distance AB and 30 minutes to cover the rest of distance BC. She then turns back and takes 30 minutes to cover the distance CB and 20 minutes to cover the rest of the distance to her starting point. She makes 5 rounds on the road the same way. Riya concludes that her motion is

- (1) only rectilinear motion.
- (2) only periodic motion.
- (3) rectilinear and periodic both.
- (4) neither rectilinear nor periodic.

29. How can you tell the difference between algae and protozoa?

- (1) Protozoa have cell walls while algae do not.
- (2) Most protozoa move while most algae do not.
- (3) Protozoa are green while algae are not.
- (4) Protozoa are larger than algae.

30. A cell that transports oxygen from lungs to body and carbon dioxide from body to lungs is known as

- (1) nerve
- (2) root hair
- (3) palisade
- (4) red blood

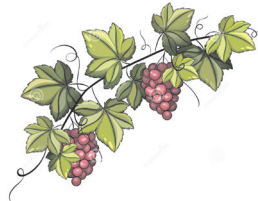
31. Which of the following plants belong to the same group as that of pea plant on the basis of the structure 'X'?



(1)



(2)



(3)



(4) None of these

32. Many plants have weak, soft stem but still can stand upright. Which of the following is an exception to this fact.

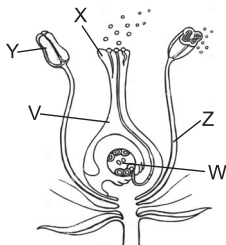
(1) Mustard

(2) Wheat

(3) Pea

(4) None of these

**Direction:** Use following diagram to answer Q.33 to Q.35



33. The phenomenon pollination is associated with which pair of plant parts?

(1) X & V

(2) Y & X

(3) Z & Y

(4) None of these

34. Which part will develop into seed in future?

(1) X

(2) V

(3) W

(4) None of these

35. Which parts comprise to form the female reproductive structure?

(1) XVW

(2) XYZ

(3) XZ

(4) None of these

36. This female reproductive part is termed as

(1) Androecium

(2) Gynoecium

(3) Calyx

(4) None of these

37. The type of flowers with examples are given below. But one of them is incorrectly matched. Find the odd one out.

(1) Unisexual flower – Cucurbita

(2) Incomplete flower – Date palm

(3) Complete flower – Mulberry

(4) None of these

38. To observe the given structure in a flower, under microscope, which part of the flower should be cut?

(1) Style

(2) Ovary

(3) Stigma

(4) None of these

39. The above structure is modified plant part. Which plant also shows same modification as the above one

(1) Bladderwort

(2) Opuntia

(3) Garden pea

(4) None of these

40. In which of the following modified plant parts will you find nodes & internodes?

(1)



(2)



(3)



(4) None of these



**END OF THE EXAM**