



EHF
LEARNING FOR LIFE

**EDUHEAL
FOUNDATION**

**CLASS
7**

LEVEL - 1

Set A1

EHF OLYMPIADS

- 4000 schools • 6 lakh students
- 11 olympiads • Global reach



EHF

**NATIONAL INTERACTIVE
SCIENCE OLYMPIAD**

Name :

Roll No :

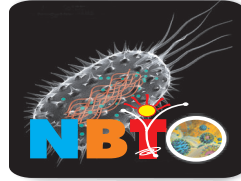
Class :

School :



art and sports clinic contest

**NATIONAL
BIOTECHNOLOGY
OLYMPIAD**



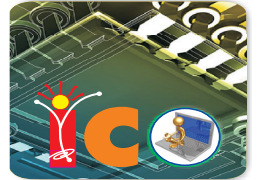
**NATIONAL
INTERACTIVE
MATHS
OLYMPIAD**



**NATIONAL
INTERACTIVE
SCIENCE
OLYMPIAD**



**INTERNATIONAL
CYBER
OLYMPIAD**



**INTERNATIONAL
ENGLISH
OLYMPIAD**



**INTERNATIONAL
GENERAL KNOWLEDGE
OLYMPIAD**



BSE
INVESTORS' PROTECTION FUND

BSE international finance olympiad (BIFO)



NATIONAL IIT-PMT OLYMPIAD (NIPO)

Instructions for the Candidate

1. You are allowed additional 10 minutes to fill the required details in the RESPONSE SHEET (OMR).
2. The question paper is made as per syllabus guidelines & pattern given in the information Booklet. The Question Paper for Classes 1 to 6 contains 40 Questions each to be answered in 60 minutes. The Question paper for classes 7 to 11 contains 60 Questions each to be answered in 60 minutes. All questions are compulsory. Further instructions are given in the instruction letter to the teacher.
3. Use the response sheet to mark your responses by darkening the required circle. The response sheet has to be returned to the foundation, duly filled in. **THE STUDENT CAN RETAIN THE QUESTION PAPER.**

WEBSITE : WWW.EDUHEALFOUNDATION.ORG
E-MAIL : INFO@EDUHEALFOUNDATION.ORG

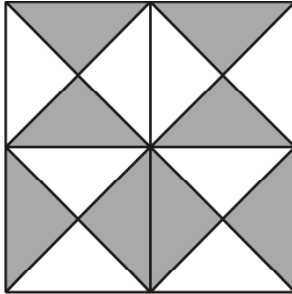
ROUGH WORK

GENERAL IQ

1. Which one of the following records the distance travelled by a vehicle?

- (1) Manometer
- (2) Odometer
- (3) Speedometer
- (4) Motometer

2. How many triangles are in this picture?



- (1) 8
- (2) 16
- (3) 36
- (4) 44

3. A golf course of 10,000 sq ft is sold for a total of ₹400,000. How much did the sq ft cost?

- (1) ₹400
- (2) ₹40
- (3) ₹4
- (4) ₹25

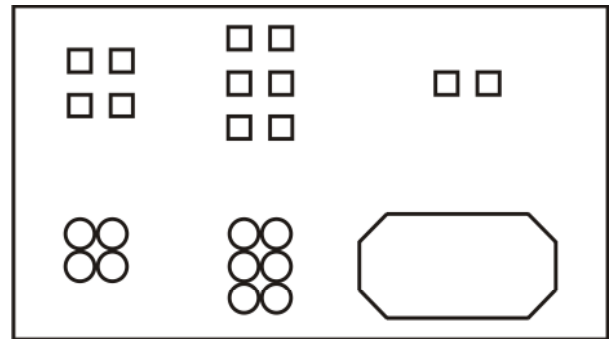
4. "Pig is to pork" as "Cow is to _____".

- (1) Lamb
- (2) Beef
- (3) Stew
- (4) Cattle

5. The following series of numbers contains one number that does not fit the pattern set by the others. What number does not fit? 3, 5, 7, 11, 14, 17

- (1) 5
- (2) 11
- (3) 14
- (4) 17

6. Select the item which would complete the pattern:



- (1)
- (2)
- (3)
- (4)

7. Rearrange the following letters to make a word and choose the category in which it fits.

FADLOFDI

- (1) City
- (2) Fruit
- (3) Flower
- (4) Vegetable

8. Which is the missing letter?

E	C	O
B	A	B
G	B	N
F	B	?

- (1) L
- (2) M
- (3) N
- (4) O

9. Which one of the sets of letters below can be arranged into a five letter English word?

- (1) a t r u n
- (2) p o d e b
- (3) t e c a r
- (4) m o h a t

10. What is next?

5, 10, 19, 32, 49, 70 ...

- (1) 89
- (2) 95
- (3) 121
- (4) 135

GENERAL SCIENCE

11. A parasitic plant which is devoid of leaves, having yellow, slender stem is
- (1) Venus fly trap (2) Amarbel
(3) Mustard (4) Yeast
12. Removal of gall bladder in man would lead to
- (1) increased acidity in intestine
(2) jaundice
(3) impairment of digestion of fats
(4) impairment of digestion of protein
13. Which part of human alimentary canal does not release any enzyme?
- (1) Oesophagus (2) Stomach
(3) Duodenum (4) Mouth
14. The wool obtained from Bakharwal breed of sheep is used for
- (1) Blankets (2) Woollen shawls
(3) Sweaters (4) Hosiery
15. Which of the following metals have highest melting point?
- (1) Mercury (2) Silver
(3) Copper (4) Gold
16. Field of a farmer has become acidic due to accumulation of water. He should use _____ to remove acidity from the soil.
- (1) manure and fertilizer
(2) lime or chalk
(3) cow dung and household wastes
(4) all of these
17. Blue vitriol is common name of
- (1) Iron sulphate (2) Magnesium oxide
(3) Copper sulphate (4) Copper carbonate
18. Which group of change included only chemical change?
- (1) Burning of paper, melting of ice and rusting of iron.
(2) Burning of paper, rusting of iron and ripening of fruits.
(3) Melting of ice, burning of paper and rusting of iron.
(4) Dissolving of sugar, burning of paper and rusting of iron.
19. Which of the following is a complex phenomenon that can vary in very short period of time?
- (1) Humidity (2) Weather
(3) Temperature (4) Climate
20. A large cyclone is a violently rotating mass of air in the atmosphere at a height of about
- (1) 20 to 25 km
(2) 5 to 8 km
(3) 1 to 2 km
(4) 10 to 15 km
21. Wind blows faster when
- (1) moisture in air is more.
(2) pressure difference between two places is less.
(3) pressure difference between two places is more.
(4) there is no difference in pressure.
22. The soil containing greater proportion of big particles is
- (1) black soil (2) alluvial soil
(3) laterite soil (4) desert soil
23. The soil which is good for growing plants is
- (1) laterite soil (2) desert soil
(3) alluvial soil (4) loamy soil
24. Two layered membrane that enclose the lung is called
- (1) bronchi (2) epiglottis
(3) pleurae (4) glottis
25. Birds, lizards and snakes excrete wastes in form of white semi-solid compound called
- (1) urea (2) lactic acid
(3) citric acid (4) uric acid

26. Virus free plants can be obtained by
 (1) root tip culture.
 (2) bordeaux treatment.
 (3) shoot tip culture.
 (4) antibiotic treatment.
27. Stigma are large and sticky in case of
 (1) insect pollinated plant.
 (2) water pollinated flower.
 (3) bat pollinated plant.
 (4) wind pollinated flower.
28. A car travelled at the speed of 50 km/h for 30 minutes and then at a speed of 80 km/h for 45 minutes. The total distance covered by car is equal to
 (1) 130 km (2) 90 km
 (3) 77 km (4) 85 km
29. Carbon rod in a dry cell is surrounded by a mixture of _____ and charcoal.
 (1) carbon dioxide (2) manganese dioxide
 (3) copper oxide (4) zinc oxide
30. Which two wires pass through the electric meter?
 (1) Live wire and neutral wire.
 (2) Only live wire.
 (3) Neutral wire and Earth wire.
 (4) Live wire and Earth wire.
31. Red colour is used as danger signal because, it has
 (1) short wavelength
 (2) bright colour
 (3) it can be seen by colour blinds also
 (4) long wavelength
32. In which step of water cycle heat loss do not takes place?
 (1) Translocation (2) Evaporation
 (3) Transpiration (4) Condensation
33. The Buxa tiger reserve is situated in
 (1) Gujarat
 (2) Madhya Pradesh
 (3) West Bengal
 (4) Assam

34. Mithun is an example of
 (1) Endemic species
 (2) Endangered species
 (3) Extinct species
 (4) Rare species
35. Which one of the following organism accumulates maximum amount of toxic substance during Biomagnification?
 (1) Fish (2) Protozoa
 (3) Human (4) Frog

36. Match the following terms and examples:

Column I		Column II	
(i)	Wave	(a)	Labrador Current
(ii)	Cold Current	(b)	Tsunami
(iii)	Tide	(c)	Gulf Stream
(iv)	Warm Current	(d)	Spring and Neap

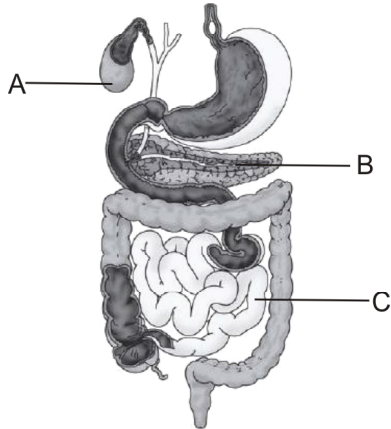
- (1) (i)-(c), (ii)-(a), (iii)-(b), (iv)-(d)
 (2) (i)-(b), (ii)-(a), (iii)-(d), (iv)-(c)
 (3) (i)-(d), (ii)-(b), (iii)-(a), (iv)-(c)
 (4) (i)-(c), (ii)-(d), (iii)-(a), (iv)-(b)
37. Image of a tree situated at far distance is obtained using concave lens. The image will be formed at
 (1) At the pole of the mirror
 (2) Centre of curvature
 (3) Between focus and pole
 (4) Focus of mirror
38. An artificial satellite is moving in a circular orbit of radius nearly 42,250 km. Calculate its linear velocity, if it takes 24 hour to revolve round the Earth.
 (1) 4.07 kms⁻¹ (2) 3.07 kms⁻¹
 (3) 5.07 kms⁻¹ (4) 6.07 kms⁻¹
39. The number of spiracles in a grasshopper are _____.
 (1) 10 (2) 20
 (3) 6 (4) 8
40. For protecting iron pipes from corrosion, they are coated with
 (1) zinc (2) copper
 (3) aluminium (4) silver

INTERACTIVE SECTION

41. Weight-lifters are generally required to make more muscles and body mass. For this purpose, they need to take a diet which is rich in
- (1) carbohydrates
 - (2) fats
 - (3) vitamins
 - (4) proteins
42. A carnivore with stripes on its body moves very fast while catching its prey. It is likely to be found in
- (1) polar regions
 - (2) deserts
 - (3) oceans
 - (4) tropical rainforests
43. On a very hot day, a girl has two choices for her dress, one lemon colour dress and another dark brown colour dress. She wore lemon colour dress to prevent _____ of heat.
- (1) radiation
 - (2) absorption
 - (3) reflection
 - (4) refraction
44. A storm has dark funnel shaped cloud reached the ground from the sky and sucked dust, debris and all other things on its way. Such a storm is called
- (1) Thunderstorm
 - (2) Tornado
 - (3) Cyclone
 - (4) Tsunami
45. Which of the following statements is correct about black soils?
- (a) It is believed that climatic condition along with the parent rock materials are the important factors for the formation of black soil.
 - (b) The black soils are made up of silt materials.
 - (c) They are rich in soil nutrients, such as calcium carbonate, magnesium, potash and lime.
 - (d) Black soil is generally poor in phosphoric contents.
- (1) (a) & (b) Only
 - (2) (b) & (c) Only
 - (3) (a) & (c) Only
 - (4) (a), (c) & (d)
46. Blue colour of the copper sulphate solution changes to green colour when an iron nail is dropped into it due to the formation of
- (1) Iron sulphate
 - (2) Copper iron sulphate
 - (3) Copper chloride
 - (4) Iron chloride
47. The temperature in polar regions in winter will be as low as
- (1) -40°C
 - (2) 45°C
 - (3) 34°C
 - (4) -37°C
48. Do ecosystems have a particular size?
- (1) 1 square mile
 - (2) 10 square miles
 - (3) 100 square miles
 - (4) ecosystems do not have one size.
49. Two drops of dilute sulphuric acid were added to 1g of copper sulphate powder and then small amount of hot water was added to dissolve it (step I). On cooling, beautiful blue coloured crystals got separated (step II). Step I and Step II are:

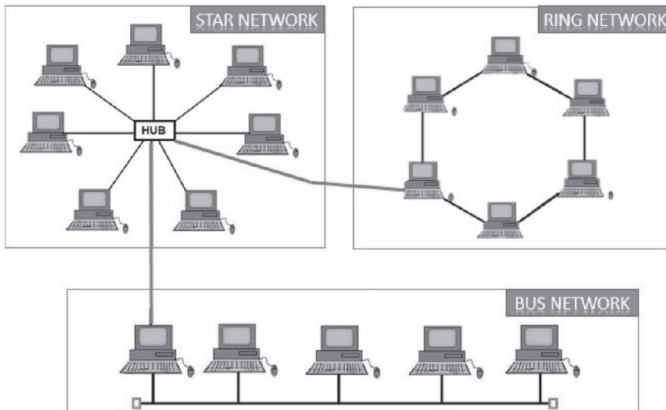
- (1) physical and chemical changes respectively.
- (2) chemical and physical changes respectively.
- (3) both physical change.
- (4) both chemical change.

50. Identify A, B and C in the given figure:



- (1) A = Stomach, B = Large intestine, C = Rectum
- (2) A = Gall bladder, B = Pancreas, C = Small intestine
- (3) A = Large intestine, B = Pancreas, C = Stomach
- (4) A = Stomach, B = Pancreas, C = Gall bladder

51. What is the name of following network?

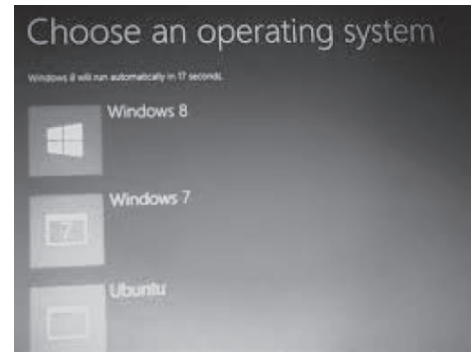


- (1) Mesh
- (2) Hybrid
- (3) Point to point
- (4) None of these

52. To find your own IP address you will use.

- (1) IPconfig
- (2) IFconfig
- (3) MSconfig
- (4) None of these

53. If we want to install multiple windows operating systems in single computer which operating system we will install first?







- (1) Ubuntu
- (2) Linux
- (3) Window 7
- (4) Window 8

54. Following image represent the medium of _____ media?



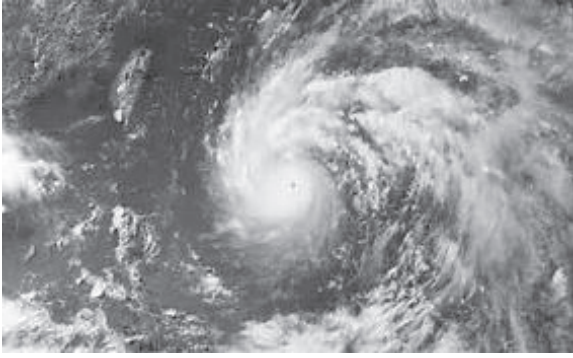
- (1) digital media
- (2) print media
- (3) electronics media
- (4) none of these

55. Which one is not a pointing device?

- (1) 
- (2) 
- (3) 
- (4) 

56. Which can rightly be named a Tornado?

(1)



(2)



(3)



(4) None of these

57. Which of the following role is not played by forests?

(1) Check air pollution.

(2) Purify water in the soil.

(3) Regulate Earth's temperature.

(4) None of these

58. Wool is produced from sheep or goat. But other animals also provide us with wool. Which animal gives us wool?

(1) Rabbit

(2) Yak

(3) Camel

(4) All of these

59. These days cotton is grown in different parts of the world. But cotton is native to

(1) USA

(2) India

(3) Egypt

(4) None of these

60. Which insect is a source of honey for us?

(1)



(2)



(3)



(4) None of these



END OF THE EXAM