



**EDUHEAL  
FOUNDATION**

**CLASS  
5**

**LEVEL - 1**

**Set A1**

**EHF OLYMPIADS**

- 4000 schools • 6 lakh students
- 11 olympiads • Global reach



**EHF**

**NATIONAL INTERACTIVE  
SCIENCE OLYMPIAD™**

Name : .....

Roll No : .....

Class : .....

School : .....



**NATIONAL  
BIOTECHNOLOGY  
OLYMPIAD**



**NATIONAL  
INTERACTIVE  
SCIENCE  
OLYMPIAD**



**INTERNATIONAL  
ENGLISH  
OLYMPIAD**



**NATIONAL  
INTERACTIVE  
MATHS  
OLYMPIAD**



**INTERNATIONAL  
CYBER  
OLYMPIAD**



**INTERNATIONAL  
GENERAL KNOWLEDGE  
OLYMPIAD**



Sponsored By:  
**BSE**  
INVESTORS' PROTECTION FUND

**Business & international finance olympiad (BIFO)**



**NATIONAL IIT-NEET OLYMPIAD (NINO)**

Go Online  
Download



**EHF Olympia**

Mobile App & Win Prizes



**Level - 1 :** All Level-1 successful\* participants will get certificate, aptitude report and school toppers will be eligible for school hero medals.

**Level - 2 :** School toppers\* will be selected for level-2-National level - online computer based interactive test held at exam centres all over India. Winner will get merit certificate, medals, laptop, scholarship and other prizes.

**Level - 3 :** Middle and Senior Class Toppers will qualify# for level-3-International level-where you will compete with students globally. Get selected for EHF's Google Science Fair Online Training Camp. Represent India & win laurels. Guidance by top scientists.

Google  
**SCIENCE FAIR**

WEBSITE : [WWW.EDUHEALFOUNDATION.ORG](http://WWW.EDUHEALFOUNDATION.ORG)  
E-MAIL : [INFO@EDUHEALFOUNDATION.ORG](mailto:INFO@EDUHEALFOUNDATION.ORG)

\* # See prospectus/website for details

# ROUGH WORK

# GENERAL IQ

1. The given seeds are dispersed by



- (1) Air
- (2) Water
- (3) Animals
- (4) None of these

2. The long winter sleep is called.

- (1) Hibernation
- (2) Nap
- (3) Nocturnal
- (4) None of these

3. Parul ate something and start saying “ssee, ssee.....”. What do you think she might have tasted?

- (1) Lemon
- (2) Chillies
- (3) Apple
- (4) None of these

4. Night blindness is caused by the the deficiency of a vitamin. This vitamin is mainly available in

- (1) Citrus food
- (2) Milk & meat
- (3) Green leafy vegetable and carrot
- (4) None of these

5. We live in society because

- (1) We cannot live alone
- (2) We depend on other people for one or the other need
- (3) We alone cannot do all works
- (4) All of these

6. Sugar can be dissolved in water quickly by

- (1) Keeping it still
- (2) Stirring it continuously
- (3) Putting ice in it
- (4) None of these

7. Which releases least smoke while burning?

- (1) Damp wood
- (2) Dry wood
- (3) Biogas
- (4) Coal

8. Two parents are dark in colour. Can they have a fair child?

- (1) Yes
- (2) No
- (3) Can't say
- (4) None of these

9. When you blow on a mirror or glass it become hazy because

- (1) Air from our blow make scratches on the mirror/ lens
- (2) Air in our blow contains water vapour which gets condensed on the mirror/lens as its surface is colder than our inside body temperature
- (3) Air in our blow contain lots of carbondioxide and it gets stuck on the mirror/lens.
- (4) None of these

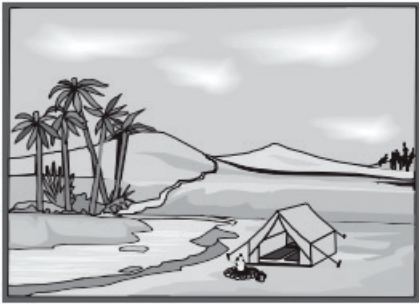
10. The shape of the moon changes every

- (1) Week
- (2) Day
- (3) Month
- (4) None of these

# GENERAL SCIENCE

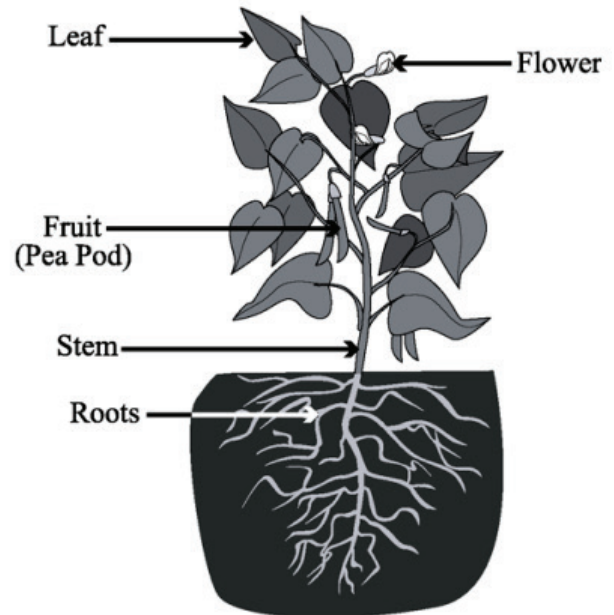
Use the following information to answer questions 11 - 12.

Leo and his family are camping in an area close to one of Rajasthan's deserts. Leo notices that there are high mountains far to the west and flat plains far to the east.



11. Weathering by wind and rain changes the features of any landscape over time. Which of the following will *most likely* happen to the area over time?
- (1) Nothing will happen.
  - (2) The river will reverse its flow.
  - (3) The mountains will become smaller.
  - (4) An ocean will form in the flat plains.
12. Which of the following is Leo *most likely* to find in the desert?
- (1) seashells
  - (2) wetlands
  - (3) sand dunes
  - (4) glacial valleys
13. What information **CANNOT** be learned from studying an animal fossil?
- (1) the age of the animal
  - (2) how much the animal weighed
  - (3) how long ago the animal lived
  - (4) the number of offspring the animal had

Use the following information to answer questions 14 - 16.



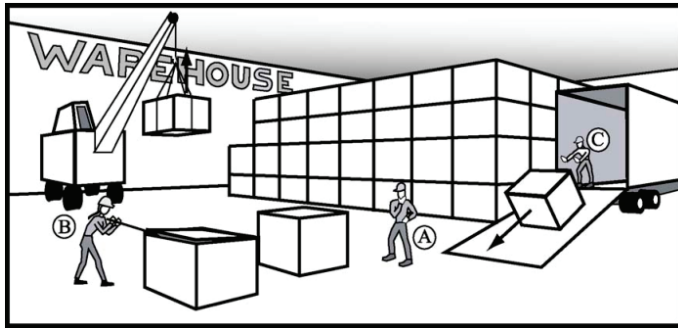
There are over 265,000 known species of plants on Earth. These plants are divided into groups based on their characteristics. The pea plant above belongs to a group of plants called seed plants.

14. A plant's stem
- (1) supports the plant.
  - (2) produces seeds for the plant.
  - (3) anchors the plant in the soil.
  - (4) absorbs water and minerals from the soil.
15. Which of the following is required in order for seeds to germinate?
- (1) soil
  - (2) light
  - (3) water
  - (4) oxygen

16. Plants produce their own food. In which part of the plant is most of its food produced?

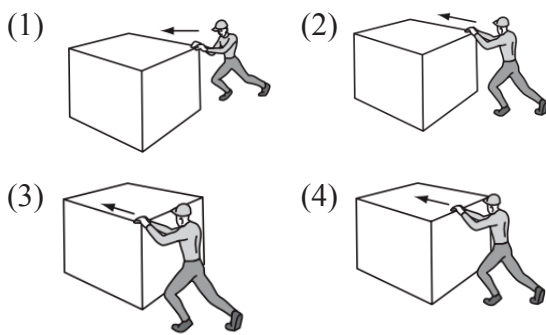
- (1) leaf
- (2) fruit
- (3) stem
- (4) root

Use the following information to answer questions 17 - 19.



In a typical warehouse, like the one shown in the diagram above, workers use different methods to move large boxes from one place to another. Answer the following questions about handling large boxes in a warehouse.

17. Worker A wants to push a heavy box. Which of the following diagrams shows the best place for him to use force if he wants to move the box in a straight line?



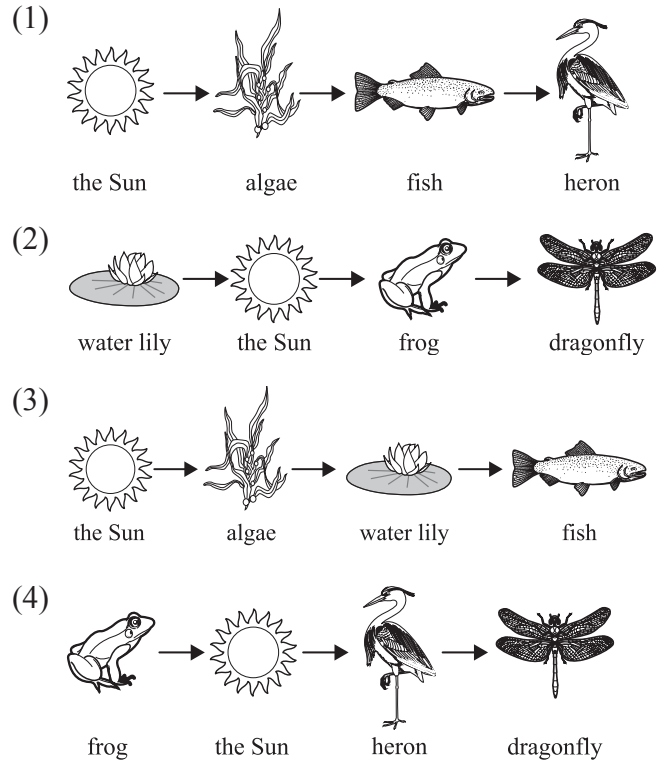
18. Worker B pushes a crowbar under the lid to open the box. How is the crowbar being used?

- (1) as a lever and as a pulley
- (2) as a wedge and as a lever
- (3) as a lever and as an inclined plane
- (4) as a wedge and as an inclined plane

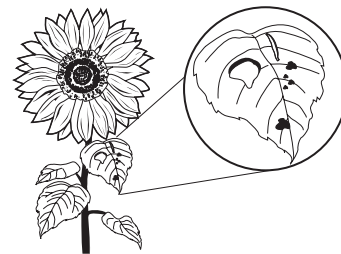
19. What force is working against the box as the crane lifts it into the air?

- (1) effort
- (2) friction
- (3) gravity
- (4) distance

20. Which food chain is found in a water ecosystem?



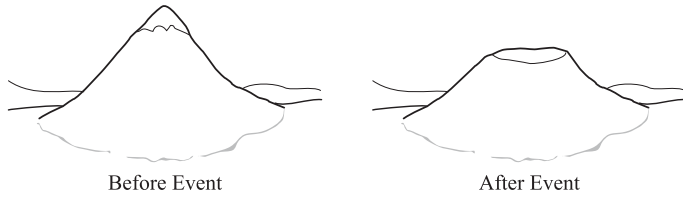
Use the picture below to answer the question.



21. A farmer notices that the leaves on some sunflower plants have holes caused by insects. The seeds of these sunflowers are planted. How many of the new sunflower plants will inherit leaves with holes?

- (1) all
- (2) none
- (3) one-half
- (4) three-fourths

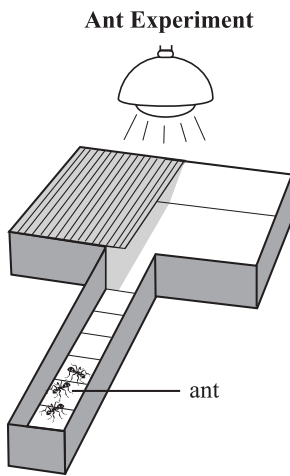
Use the pictures below to answer the question.



22. Which event caused the change to the mountain?

- (1) eruption                      (2) flood  
 (3) hurricane                    (4) landslide

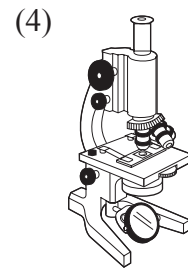
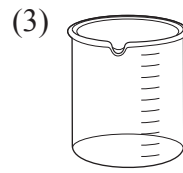
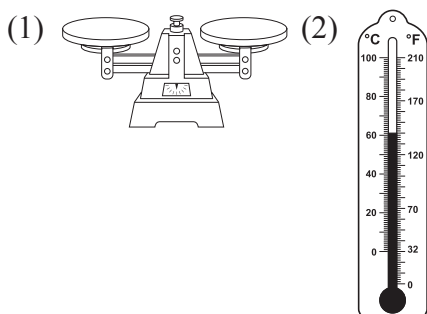
Use the picture below to answer the question.



23. Which question does this experiment test?

- (1) Where do ants get food?  
 (2) What is the mass of the ants?  
 (3) How many kinds of ants are there?  
 (4) Will ants go to a dark or light area?

24. Students want to find out which box of feathers has the greatest mass. Which tool could they use to measure the mass of each box?



25. What is another word for protective colouration?

- (1) camouflage                    (2) habitat  
 (3) hibernation                    (4) migration

Use the table below to answer the question.

Summer Day in Goa

Time	Air Temperature
8:00 a.m.	18°C
9:00 a.m.	19°C
10:00 a.m.	20°C
11:00 a.m.	22°C
12:00 p.m.	24°C
1:00 p.m.	26°C
2:00 p.m.	29°C

26. What is the predicted air temperature at 4:00 p.m.?

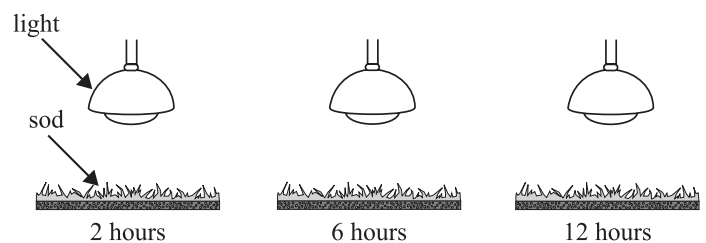
- (1) 27°C                              (2) 29°C  
 (3) 35°C                              (4) 43°C

Use the procedure below to answer the question.

Procedure:

1. Set three equal pieces of sod (grass and soil) in three trays.

2. Place lights as shown in the picture.



3. Turn on the first light for two hours. Turn on the second light for six hours. Turn on the third light for 12 hours.

4. Add 200 milliliters (mL) of water to the sod in each tray every four days.
5. Measure the height of the grass in each tray on Friday of each week.
27. Students are completing this investigation. Which factor changes during the investigation?
- (1) amount of light
  - (2) type of grass
  - (3) amount of water
  - (4) type of soil
28. Which BEST describes how the Sun heats Earth's surface?
- (1) consistently
  - (2) equally
  - (3) evenly
  - (4) unevenly

Use the pictures below to answer the question.

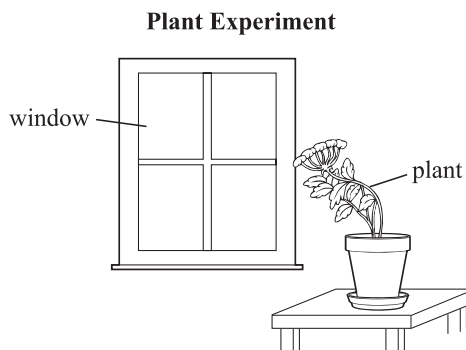
Bird Feet



29. Which bird foot is the BEST for swimming?
- (1) foot 1
  - (2) foot 2
  - (3) foot 3
  - (4) foot 4
30. Which change takes place when a chocolate bar melts?
- (1) A solid becomes a gas.
  - (2) A liquid becomes a gas.
  - (3) A solid becomes a liquid.
  - (4) A liquid becomes a solid.

## INTERACTIVE SECTION

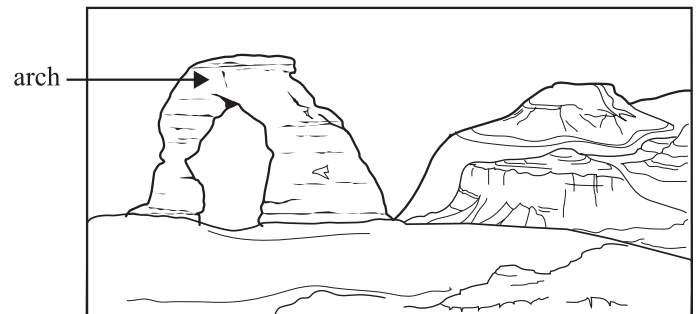
Use the picture below to answer the question.



31. Which conclusion can be made about this plant?
- (1) The plant grows without light.
  - (2) The plant grows toward the light.
  - (3) The plant grows slower with light.
  - (4) The plant grows away from the light.
32. Which shows an effect of humans on an environment?
- (1) a nest made of dead branches

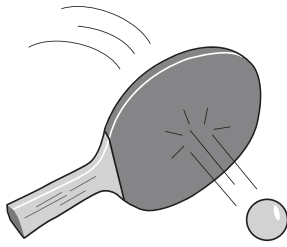
- (2) a river eroding away a riverbank
- (3) a trail built by cutting down trees
- (4) a group of butterflies landing on flowers

Use the picture below to answer the question.



33. Which process shaped the arch?
- (1) deposition
  - (2) earthquake
  - (3) landslide
  - (4) weathering

34. A ball is at rest until a paddle exerts force as shown below.



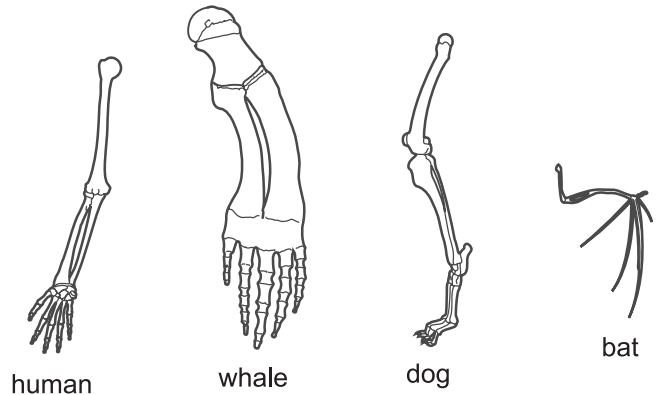
What kind of energy is shown by the ball as it is moving away from the paddle?

- (1) potential energy
  - (2) kinetic energy
  - (3) chemical energy
  - (4) nuclear energy
35. Which organisms are most important for adding nutrients to the soil?
- (1) consumers
  - (2) scavengers
  - (3) producers
  - (4) decomposers
36. Which list has all terrestrial planets?
- (1) Earth, Mars, Jupiter, Saturn
  - (2) Mercury, Venus, Earth, Mars
  - (3) Mars, Saturn, Jupiter, Neptune
  - (4) Jupiter, Saturn, Uranus, Neptune
37. What is the original source of the energy released when fossil fuels are burned?
- (1) decayed bacteria
  - (2) Earth's core
  - (3) nuclear fission
  - (4) the Sun
38. Which is the most basic unit of matter?
- (1) compound
  - (2) element
  - (3) mixture
  - (4) molecule

39. A reflector helps people in cars see a bicycle at night.  
How do bicycle reflectors work?

- (1) They bounce light back from other sources.
- (2) They are covered with paint that glows in the dark.
- (3) They are made of a special material that gives off its own light.
- (4) They are connected to batteries that allow them to produce their own light.

40. Use the pictures below to answer the question.



What can be inferred from the bones in the pictures?

- (1) All structural features are used to walk.
- (2) All structural features have a similar function.
- (3) The organisms have similarities in skin features.
- (4) The organisms have the same structural features.



**END OF THE EXAM**